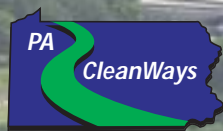


PA CleanWays Illegal Dump Survey Final Report City of Pittsburgh 2009



**Empowering people to eliminate illegal
dumping and littering in Pennsylvania**





**Empowering people to eliminate
illegal dumping and littering
in Pennsylvania.**

Since 1990, PA CleanWays has been dedicated to empowering people to eliminate illegal dumping and littering. Through the coordinated efforts of more than 41,500 PA CleanWays cleanup volunteers, over 10,100 tons of trash and 126,000 tires have been removed from illegal dumpsites in Pennsylvania and properly disposed. Through special collection events sponsored by PA CleanWays chapters and affiliates, an additional 255,000 tires and 24,000 appliances have been properly disposed. Our experience indicates that local involvement, partnerships, and support are vital to lasting success in addressing illegal dumping and littering.

PA CleanWays

105 West Fourth Street, Greensburg, PA 15601

Phone: 724-836-4121 • Toll Free: 877-772-3673

Fax: 724-836-1980 • www.pacleanways.org

EXECUTIVE SUMMARY

PA CleanWays is a nonprofit organization that empowers people to eliminate illegal dumping and littering in Pennsylvania through various education and environmental programs. PA CleanWays' illegal dump surveys educate state, county, and local officials about the problem of illegal dumping and provide valuable data about the dumpsites and the community in which they reside to address the problem through cleanups, municipal waste collections, and recycling programs.

Illegal dumpsite identification was completed by driving roads and contacting various constituent groups such as municipal offices and community services, state agencies, and environmental and conservation groups in the City of Pittsburgh. Limitations of the survey process included poor visibility in high growth areas and surveyors not accessing private lands or high crime/high risk areas. Due to these limitations, it is likely that there were additional dumpsites not accounted for in this report. Private dumps were not included in the survey. The survey process is to document sites where a landowner has been the victim of illegal dumping from other parties, not sites where they have been doing the dumping themselves, or past owners did the dumping. Due to cleanups held in the spring and fall, some areas with a history of dumping may not be reflected in this report due to recent cleanup efforts.

There were 279 dumpsites identified in the City of Pittsburgh containing an estimated 676.38 tons of trash. Seventy-nine percent of the sites were determined to be active. All 90 neighborhoods in the City of Pittsburgh have mandatory trash collection and curbside recycling available. There are also drop-off centers in the East End, Hazelwood, and West End areas, as well as all the Public Works Centers throughout the city. PA CleanWays found illegal dumping activity in forty-eight city neighborhoods.

Nine, or 3%, of the surveyed sites were in the vicinity (50 feet or within) of some sort of waterway or body of water. Of those, 3 sites had waste materials directly in the waterway itself. Hard-to-dispose of items, such as tires, construction and demolition waste, along with household trash, were the most common waste types in the identified dumpsites. Recyclables, including steel, bi-metallic and aluminum cans, glass, plastic bottles, newspaper, magazines, and cardboard were also found, usually mixed with other materials.

TABLE OF CONTENTS

EXECUTIVE SUMMARY	i
BACKGROUND	1
PURPOSE OF ILLEGAL DUMP SURVEYS	1
IMPACTS OF ILLEGAL DUMPING.....	1
SURVEY METHOD.....	2
DEFINITION OF AN ILLEGAL DUMPSITE.....	2
SITE IDENTIFICATION AND ASSESSMENT.....	3
LIMITATIONS	3
PRIVATE DUMPING	4
CITY OF PITTSBURGH ILLEGAL DUMPSITE SURVEY AREA AND RESULTS.....	4
SURVEY AREA.....	4
SITE CHARACTERISTICS.....	6
IMPACTS ON WATERWAYS	6
WASTE CHARACTERISTICS	6
POSSIBLE CAUSES AND SOLUTIONS	7
POSSIBLE CAUSES.....	7
POSSIBLE SOLUTIONS.....	7
SUMMARY	8
ATTACHMENTS	
#1 City of Pittsburgh Illegal Dumpsites and Neighborhoods Map	
#2 City of Pittsburgh Illegal Dumpsites and Population Density Map	
#3 City of Pittsburgh Illegal Dumpsites and Environmental Features Map	
#4 Identified Illegal Dumpsites and Trash Collection by City Neighborhood	
#5 Illegal Dumpsite Survey Site Characteristics by City Neighborhood	
#6 Illegal Dumpsite Survey Waste Characteristics by City Neighborhood	
#7 Illegal Dumpsite Survey Summary Chart by Waste Type	

BACKGROUND

PA CleanWays is a nonprofit organization that empowers people to eliminate illegal dumping and littering in Pennsylvania. Since 1990, PA CleanWays has helped people who are ready to take action against these destructive problems. By partnering with city officials, concerned residents, and community organizations, tangible results can be seen within a community through:

- organization of illegal dump and litter cleanups,
- adoption of local areas,
- prevention of future dumping by the watchful eyes of volunteer monitors,
- placement of physical deterrents, and,
- enforcement action when needed.

PA CleanWays educates the public about proper waste disposal, recycling, and practical alternatives to dumping and littering through the dissemination of literature, presentations, and coordination of collection events for hard-to-dispose of items.

PURPOSE OF ILLEGAL DUMP SURVEYS

The purpose of the illegal dump survey was to assess and document as many illegal dumpsites as possible within the City of Pittsburgh. Illegal dumping mostly occurs in remote and secluded places, such as rural areas where few people live and the roads are less traveled. However, for many people who are residents of an urban area, an illegal dump can often be found within a one-mile radius of their home. Illegal dumping, within an urban context, has its own set of unique characteristics. Overall, very few people are aware of the widespread problem of illegal dumping.

The first step in developing an action plan against illegal dumping in a community is to determine the extent of the illegal dumping problem. Once sites are identified, assessed, and mapped, the data gathered can be used to:

- show that a problem does indeed exist,
- prioritize the sites and areas for cleanup and abatement,
- document problem materials within the dumpsites and develop plans for proper disposal, and,
- provide a benchmark to measure cleanup progress.

The survey is also a tool that can be used for planning purposes within the community. It can provide valuable insight into the development and enhancement of solid waste and recycling programs. It can also be used to gain support for funding of public awareness programs and education, as well as to generate funds to clean the existing dumpsites.

IMPACTS OF ILLEGAL DUMPING

Illegal dumping poses a direct threat to the health and safety of humans and animals. Illegal dumping attracts disease-spreading rodents and mosquitoes by giving them a place to live and breed. West Nile Virus, carried by mosquitoes, has been a primary concern for environmental

officials. Illegal dumps also can be a source of physical injury for humans and animals due to broken glass, rusty metals, and toxic substances.

Recently, a new threat has been added to illegal dumping. Methamphetamine labs, used to produce the illegal drug crystal meth, are becoming more and more common. The materials used to make the illegal drug are tossed along the roadsides in illegal dumps and are extremely toxic.

Environmentally, illegal dumping pollutes our soil, surface, and groundwater supplies, as well as the air we breathe if a site catches on fire. The emissions released by the burning plastics and household hazardous waste can be extremely toxic. It is also aesthetically unpleasing and ruins the beauty of natural areas, including many public places such as neighborhood parks and athletic fields, greenways, and city steps.

Economically, illegal dumps are expensive to clean up. Government agencies spend millions annually on cleanup efforts. The estimated cost to clean up a site can be anywhere from \$600 to over \$1,000 per ton for clean up and removal.¹

Illegal dumpsites can also impact property values, can be a liability for property owners, and affect property purchases and transfers. Tourism revenue can also be negatively impacted by illegal dumps, as tourists may perceive that trash is not a priority to current residents or the larger community.

Illegal dumping also has social impacts on an area. When illegal dumping in neighborhoods and communities becomes status quo, quality of life is impacted and low-level property crime often increases.² This is what is referred to as the “broken window theory” developed originally by James Q. Wilson and George Kelling. The “broken window theory” suggests that neighborhood strategies help to deter and reduce crime by the fast clean up of illegally dumped items, litter, and spilled garbage, and by the prompt removal of disposed of items.³

SURVEY METHOD

Definition of an Illegal Dumpsite

One of the primary goals of an illegal dump survey is to ultimately address the trash in our communities; therefore, the following were considered illegal dumpsites and included in the survey:

- Areas of concentrated trash,
- Areas of scattered trash that:
 - are not considered roadside litter (bottles, fast food wrappers, cans, etc.)
 - appear to have new trash thrown on them occasionally (more than twice a year)

¹PA CleanWays averaged cost from multiple cleanups throughout 2004 & 2005.

² Wilson, James Q., Kelling, George L., “Broken Windows”, *Atlantic Monthly*, March 1982.

³ Henry G. Cisneros, “Defensible Space: Deterring Crime and Building Community”, January 1995.

- appear to have new trash thrown on them occasionally, but cleanup maintenance is prevalent to prevent accumulation,
- Areas containing only piles of yard waste (grass, leaves, branches, trees, etc.). These sites can often attract the dumping of other materials and can evolve into major dumpsites, and,
- Areas containing isolated or solitary items, such as 1 or 2 appliances or tires that may or may not be dumped on in the future.

Site Identification and Assessment

PA CleanWays has learned through its experiences that, to effectively identify illegal dumpsites in an area, it is necessary to physically travel the roadways. By focusing on high probability areas for dump locations such as pull-offs, roads with hillsides, wooded areas, etc., efficient surveying can be done on large areas within a short amount of time.

Preliminary data collection was conducted through various forms. Information sharing was done with the City of Pittsburgh Department of Public Works, Redd Up Pittsburgh, Clean Pittsburgh Commission, Pennsylvania Resources Council, Citizens Against Litter, and Allegheny CleanWays. Letters were sent out to each neighborhood Steward in the Clean Pittsburgh Commission detailing the survey purpose and plan, and asking for known illegal dumpsites to be reported back to PA CleanWays. Letters were also sent to conservation/environmental groups, neighborhood development groups, the Pennsylvania Department of Environmental Protection, Pittsburgh Police Zone Stations, and local government officials. PA CleanWays also met with Department of Public Works Supervisors from each District and received a list of known dumpsites from each Supervisor.

Once an illegal dumpsite was located, characteristics about the site itself were recorded and documented on standard forms (a copy of the Illegal Dump Survey Assessment Form and Instruction Sheet are available by contacting PA CleanWays). Pictures were also taken of the illegal dumpsites to further document the problem. GPS coordinates were recorded for each site in order to produce illegal dumpsite maps within the county based on neighborhoods, population density, and environmental features (see Attachments 1, 2, and 3).

Limitations

The primary limitation with road surveys is that they only permit discovery of sites visible from the public right-of-way; therefore, only those sites were assessed by PA CleanWays. PA CleanWays did not enter private property to assess sites. It can be presumed that there are significant numbers of illegal dumpsites out of sight on private property with limited access. Additionally, safety considerations were a priority for this project. PA CleanWays did not survey high crime/risk areas therefore omitting any illegal dump sites in those areas from this report. Further, most surveying began after the foliage had thinned in the fall and visibility improved, or in late winter/early spring before foliage became prominent; however, some site assessments were limited due to high vegetation and snowfall.

Surveying occurred in the spring and fall of 2008, and in the winter and spring of 2009. Due to cleanups held in the spring and fall, some areas with a history of dumping may not be reflected in this report due to recent cleanup efforts.

Private Dumping

While PA CleanWays strives to include as many illegal dumpsites in each surveyed area as possible, we do not intentionally include private dumpsites in our reports. The survey process is to document sites where a landowner (including land owned by the City of Pittsburgh) has been the victim of illegal dumping from other parties, not sites where they have been doing the dumping themselves, or past owners did the dumping.

These include sites such as stockpiles of scrap, yard waste, household trash, and other things one may find in an illegal dumpsite. Usually these sites are determined private by its proximity to a residence, or marked private with no trespassing signs. There are many times when the surveyor is not able to distinguish between a private site and an illegal dumpsite. In these cases, the site is surveyed and sent to the PA CleanWays office where, based on the data gathered and photos taken, it is determined whether to include it in the final report as an illegal dumpsite. If a dumpsite in a published report is found to be a private dumpsite, the site is immediately removed from the report.

It should be noted that dumpsites on a vacant lot or in and around a vacant structure such as an abandoned garage were assessed and included in the survey.

CITY OF PITTSBURGH ILLEGAL DUMPSITE SURVEY AREA AND RESULTS

Survey Area

The City of Pittsburgh encompasses 58.3 square miles, 55.5 miles of land and 2.8 of water. It is located in Allegheny County in southwestern Pennsylvania. The city itself has 90 individual neighborhoods, and is surrounded by 129 municipalities within Allegheny County. Pittsburgh has 4 major watersheds within its boundaries; the Upper Ohio River Watershed, the Lower Allegheny River Watershed, the Chartiers Creek Watershed, and the Turtle Creek Watershed. According to the Census Bureau, the 2000 census recorded the population as 334,563. The median household income is \$28,588. The per capita income is \$18,816. The percentage of individuals below poverty status is 20.4%, while 15% of families are below poverty status. The national average is 12.4% for individuals and 9.1% for families. The percent of high school graduates or higher is 81.3%, which is lower than the state average of 81.9%.

The City of Pittsburgh, also known as the “The Steel City” and “The City of Bridges”, is the second largest city in Pennsylvania. Located at the confluence of the Allegheny and Monongahela Rivers, where the Ohio River forms, the city can be divided into 5 main areas; Downtown, also called the Golden Triangle, the North Side, South Side/South Hills, East End, and West End. The four surrounding areas of the downtown area are further subdivided into individual neighborhoods.

Pittsburgh has a rich history dating back to the early 1700’s. In 1758, the French destroyed Fort Duquesne during the French and Indian War, and General Forbes ordered the construction of Fort Pitt and named the settlement between the two rivers Pittsborough, which through the years evolved into Pittsburgh.

After the American Revolution, Pittsburgh continued to grow. By 1815, Pittsburgh was producing significant amounts of iron, brass, tin, and glass products. By 1857, Pittsburgh's 1,000 factories were using unbelievable amounts of coal to produce all of these products.

Steel production began in 1875 when Andrew Carnegie founded the J. Edgar Thomson Steel Works in North Braddock. In 1901, U.S. Steel Corporation was formed, and by 1911, Pittsburgh was producing between a third and a half of the nation's steel. The city's population grew to over a half million, mostly from immigrants from Europe who came to work at the mills. World War II continued the economic boom in the city. During that time, Pittsburgh produced over 90 million tons of steel to go to the war effort. At this time the City was also making a new name for itself, The Smoggy City, due to the pollution from burning coal and steel production.

After the war, the city launched a clean air and revitalization project known as the "Renaissance". In 1977, the "Renaissance II" project began, focusing more on cultural neighborhood development. In the 1970's and 1980's, the steel industry in the region imploded, with massive layoffs and mill closures. Beginning in the 1980's, Pittsburgh shifted its economic base to education, tourism, and services that were based on healthcare, medicine, and technology such as robotics. Unfortunately, due to the mill closures, the city's population shrank over 350,000 by the year 2000.

Since the downturn of 1970's and 1980's, Pittsburgh has seen growth. Today the economy is largely based on healthcare, education, technology, engineering, and financial services. The city still maintains its status as a corporate headquarters city, with eight Fortune 500 companies housing their main offices in Pittsburgh. The housing market has remained stable and cost of living is low compared to other cities in the northeastern U.S. Pittsburgh has ranked high in lists of the nation's most livable cities. In 2007, the city made the top of the list, and is the only city to finish in the top 20 of every edition.⁴

Education plays a key role in Pittsburgh's continuing development. The city is home to many colleges, universities, and research facilities. Pittsburgh also has a strong cultural base as well. Music, museums, dance, and theatre thrive in the city. Travel is a \$3-billion industry that provides more than 50,000 full time jobs in Pittsburgh and surrounding Allegheny County. More than 10 million people visit the Pittsburgh region annually.⁵

Pittsburgh has a lot to offer to the outdoor enthusiast as well. There are 38 miles of downtown shoreline, with walking and biking trails. Fishing is very popular, as Pittsburgh's three rivers support every species of fish found in Pennsylvania. Boating and rowing are also popular on the rivers. Pittsburgh also has 4 beautiful parks within its borders; Frick, Highland, Riverview, and Schenley, with over 1,700 acres available for activities and programs year-round.

In Pennsylvania, municipal solid waste (msw) includes municipal waste, sewage sludge, construction and demolition waste, asbestos, and ash. In the City of Pittsburgh, all 90

⁴ Majors, D. "Pittsburgh rated 'most livable' once again; After 22 years, back atop Places Rated Almanac", *Pittsburgh Post-Gazette*, April 26, 2007.

⁵ VisitPittsburgh website www.visitpittsburgh.com/news-room/press-kit/by-the-numbers. Extracted May 15, 2009.

neighborhoods in the City of Pittsburgh have mandatory trash collection and curbside recycling. There are also drop-off centers in the East End, Hazelwood, and West End areas, as well as all the Public Works Centers in the city. PA CleanWays found illegal dumping activity in forty-eight city neighborhoods (see Attachment 4). In 2008, according to the City of Pittsburgh Refuse and Recycling Departments, Pittsburgh reported a total of 100,086 tons of municipal solid waste generated. Of that total, 11,114.18 tons were recycled giving the City of Pittsburgh an 11% recycling rate. The city has an msw generation rate of 0.30 tons per person per year. The national average is 0.84 tons per person per year.

Site Characteristics

The City of Pittsburgh survey resulted in the identification of 279 illegal dumpsites totaling an estimated 676.38 tons of trash. The sites ranged in size from approximately .125 tons to 50 tons of waste. A chart of Site Characteristics by Neighborhood can be found as Attachment 5 of this report.

Of the 279 dumpsites, 64 were found over steep hillsides. The terrain of Pittsburgh is very hilly. Hillsides provide illegal dumpers with a convenient place for easy unloading. Seventy-nine percent of the sites were considered to be a continuous problem where dumping occurs routinely. Fifty-three sites (19%) had “No Dumping” signs present. Forty-seven (17%) were considered active sites. Signs, although effective in some areas, often send a message that this is a “safe” place to dump. In some surveys, the presence of signs resulted in the identification of sites that were not visible from the road. Concerning visibility, 56% of the sites were visible and 30% were partly visible from the road. This fact lends itself to the theory that illegally dumped trash will attract more trash.

Impacts on Waterways

Of all the illegal dumpsites, those posing the most direct and obvious threat to the environment were located in or near waterways. Nine, or 3%, of the surveyed sites were in the vicinity (50 feet or within) of some sort of waterway or body of water. Of those, 3 sites had waste materials directly in the waterway itself (see Attachment 5). It should, however, be noted that all illegal dumps pollute our soil, surface, and groundwater supplies.

Waste Characteristics

The City of Pittsburgh’s illegal dumpsites contained a variety of waste types. In some areas, the common presence of a waste type may indicate the need for a special collection program for that particular material. Although there were a variety of refuse found in the illegal dumps, tires, household trash, and construction and demolition waste items were the most common waste type identified. Recyclables were also frequently found while surveying. Recyclables are defined as steel, bi-metallic and aluminum cans, glass, plastic bottles, newspaper, magazines, and cardboard. These were usually mixed with other materials. A chart of the Waste Characteristics by neighborhood can be found as Attachment 6, as well as a summary chart showing Illegal Dumpsite Waste Types as Attachment 7.

POSSIBLE CAUSES AND SOLUTIONS

Illegal dumping occurs in every county of the state. There are a multitude of reasons and excuses why people dump: the cost or inconvenience of proper disposal; the lack of, or frustration in finding proper disposal options; lack of public education; profit making; the result of other criminal activity or malicious mischief. Possible causes and solutions of illegal dumping specific to the City of Pittsburgh are listed below.

Possible Causes

- **Limited disposal options of Construction and Demolition debris (C&D)**
Pittsburgh prohibits construction materials in their curbside trash and while there are ways to dispose of C&D waste properly, dumpers may not consider them affordable and or convenient. C&D debris is a serious solid waste management issue because of the amount that is generated each year. C&D debris is often found in illegal dumps and creates a compounded problem because some of the materials may be hazardous, such as wood that has been chemically treated or painted with lead based paint, insulation containing asbestos, or shingles.
- **No fear of enforcement**
Dumpers believe violent crimes and other criminal activity take precedence over littering and dumping. As a result, dumpers do not fear prosecution and see no reason to cease this unlawful behavior.
- **Lack of education on illegal dumping**
Illegal dumping has been a learned habit for many. Prior to anti – dumping laws, it was common practice to use open town dumps, burn or bury trash, or dump in a convenient out of the way area. Today, we know the harmful effects from illegal dumping. Education is critical to help diminish deleterious habits and to teach the public proper and safe disposal practices.

Possible Solutions

- **Cleanups**
Cleanups are an effective way to combat littering and illegal dumping. Many groups and organizations, in addition to the Department of Public Works, conduct cleanups throughout the city. Cleanups help to build ownership, restore community pride, and send a message that dumping will no longer be tolerated.
- **Special collection events**
One-day special collection events are worthwhile and are held periodically around the city. These special collections commonly target hard-to-dispose of materials such as tires, appliances, scrap metal, computers, electronics, and household hazardous waste. Most of these items account for what is found in illegal dumps.

- **Physical deterrents**
Placing guard rails or mounds of dirt at pull-off areas, as well as tree plantings, can help provide a barrier that will limit accessibility to a site for future dumping.
- **Site monitoring and maintenance**
It is important to monitor a site after an area has been cleaned in order to watch for and cleanup up subsequent dumping or littering, and to report any incriminating evidence to the proper enforcement agency. Keeping the site clean makes it easier to spot new trash and discourages subsequent dumping, since trash attracts trash.

Surveillance cameras have also been effective in catching and prosecuting illegal dumpers in other cities. Enforcement, with site monitor support, effectively decreases the incidents of dumping and littering. When word gets out that dumping activity will not be tolerated and violators will be caught and prosecuted, dumping decreases.
- **Community education**
Intentional illegal dumping and littering are social problems that require a shift in attitudes and practices. Education is the key to changing values, habits, and attitudes. Education programs should be tailored to inform the community about proper disposal and can take many forms, such as, school/community presentations, press releases, radio and newspaper ads, and publications.
- **Enforcement of existing laws**
Any improper disposal of trash is illegal and violators can be prosecuted. Numerous Pennsylvania agencies enforce laws addressing improper disposal of trash. The Pennsylvania General Assembly creates and enacts our littering and dumping laws.⁶ County and municipal governments create and enact ordinances that are specific within their local boundaries.

SUMMARY

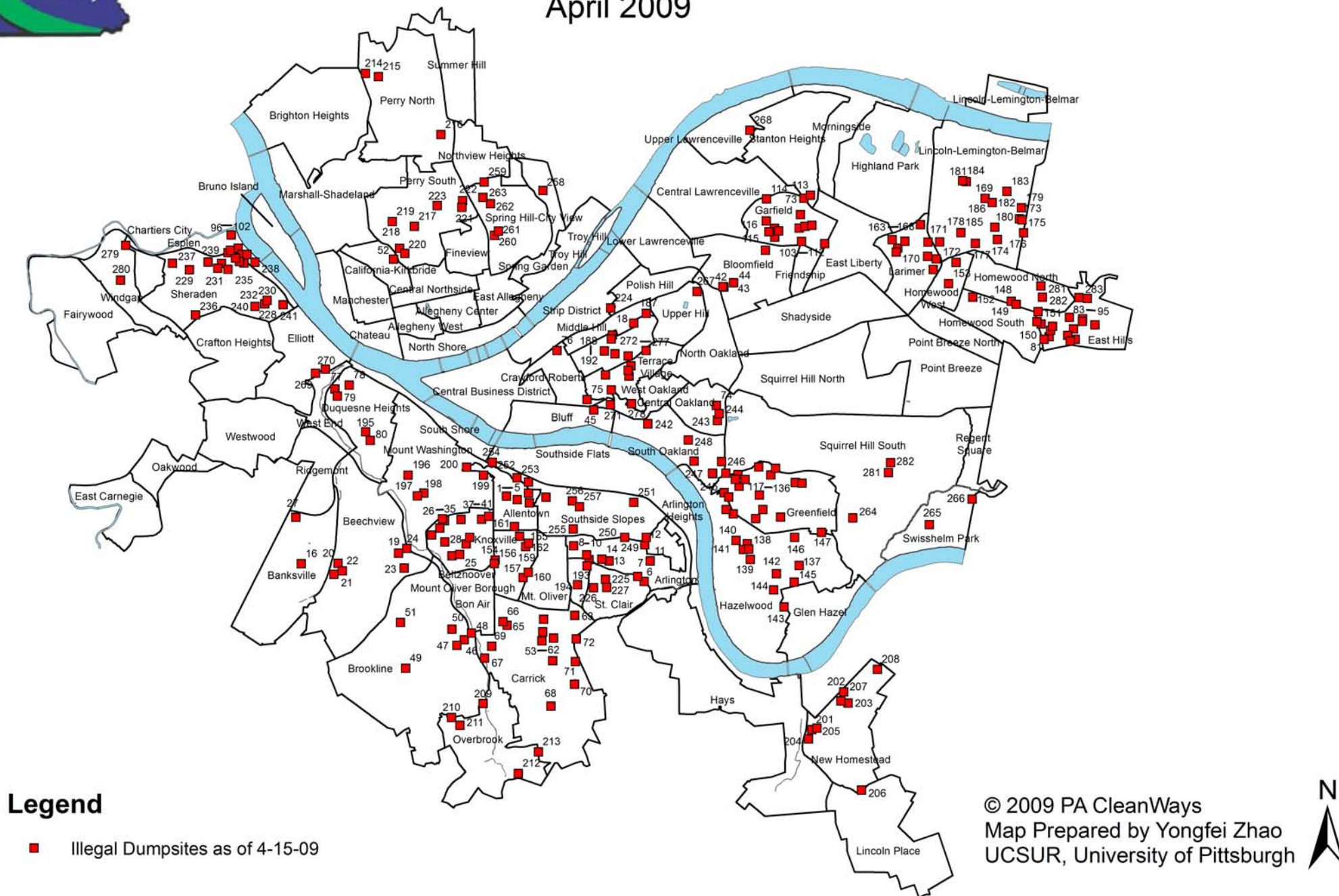
This survey accounted for 279 illegal dumpsites in the City of Pittsburgh consisting of an estimated 676.38 tons of trash. This is not a comprehensive survey of the entire city as it is expected that there are many more illegal dumpsites on private lands, as well as ones on public lands that have gone undetected. However, the documentation and assessment of these 279 sites in Pittsburgh is a strong step forward in the fight against illegal dumping. By providing the needed data to address the problem of illegal dumping, constituents can begin doing so through public policy, resource allocation, community education, and cleanups.

⁶ Read about the Pennsylvania Code at www.pacode.com.



City of Pittsburgh, Pennsylvania Illegal Dumpsites and Neighborhoods April 2009

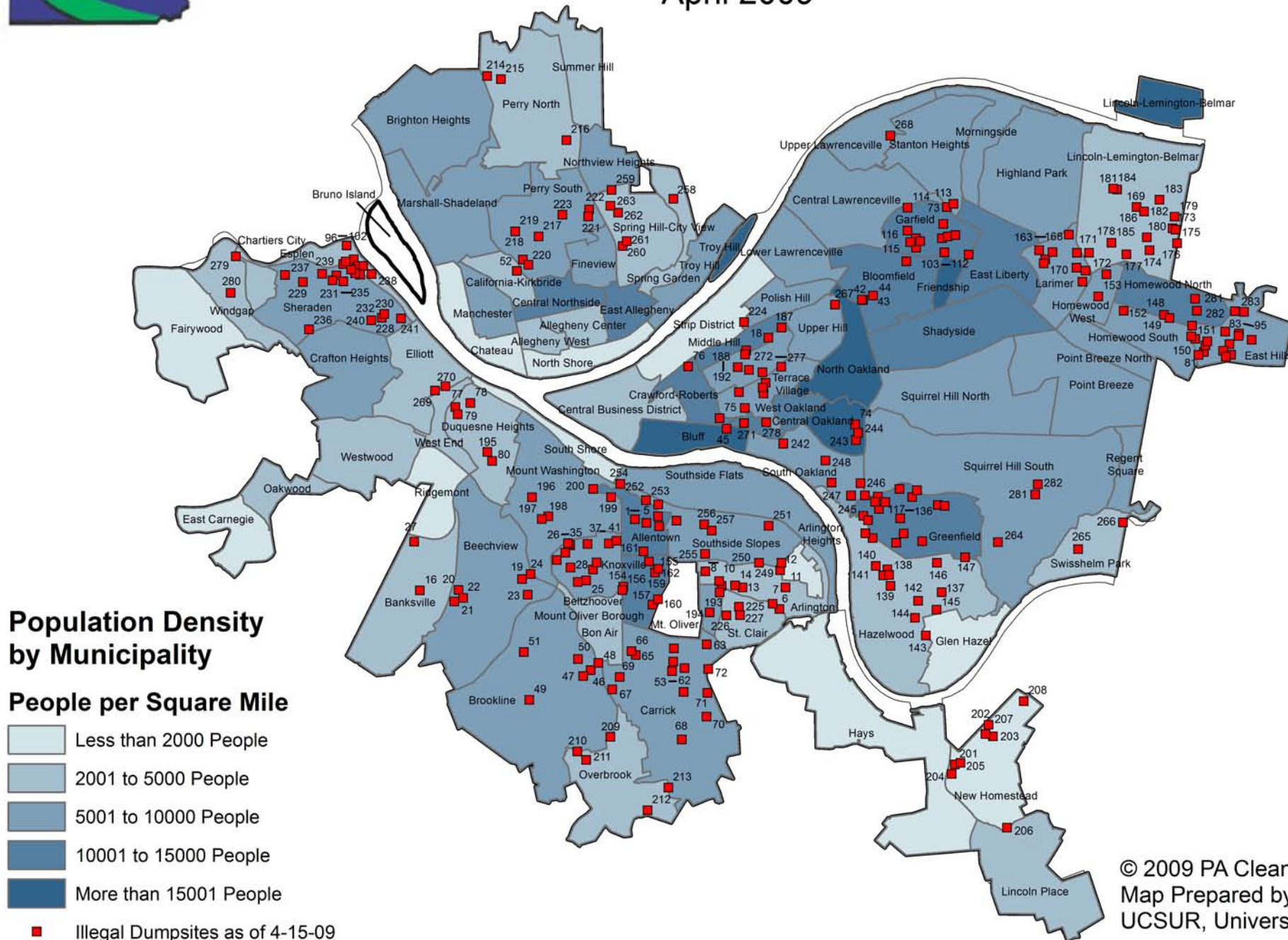
Attachment 1





City of Pittsburgh, Pennsylvania Illegal Dumpsites and Population Density April 2009

Attachment 2



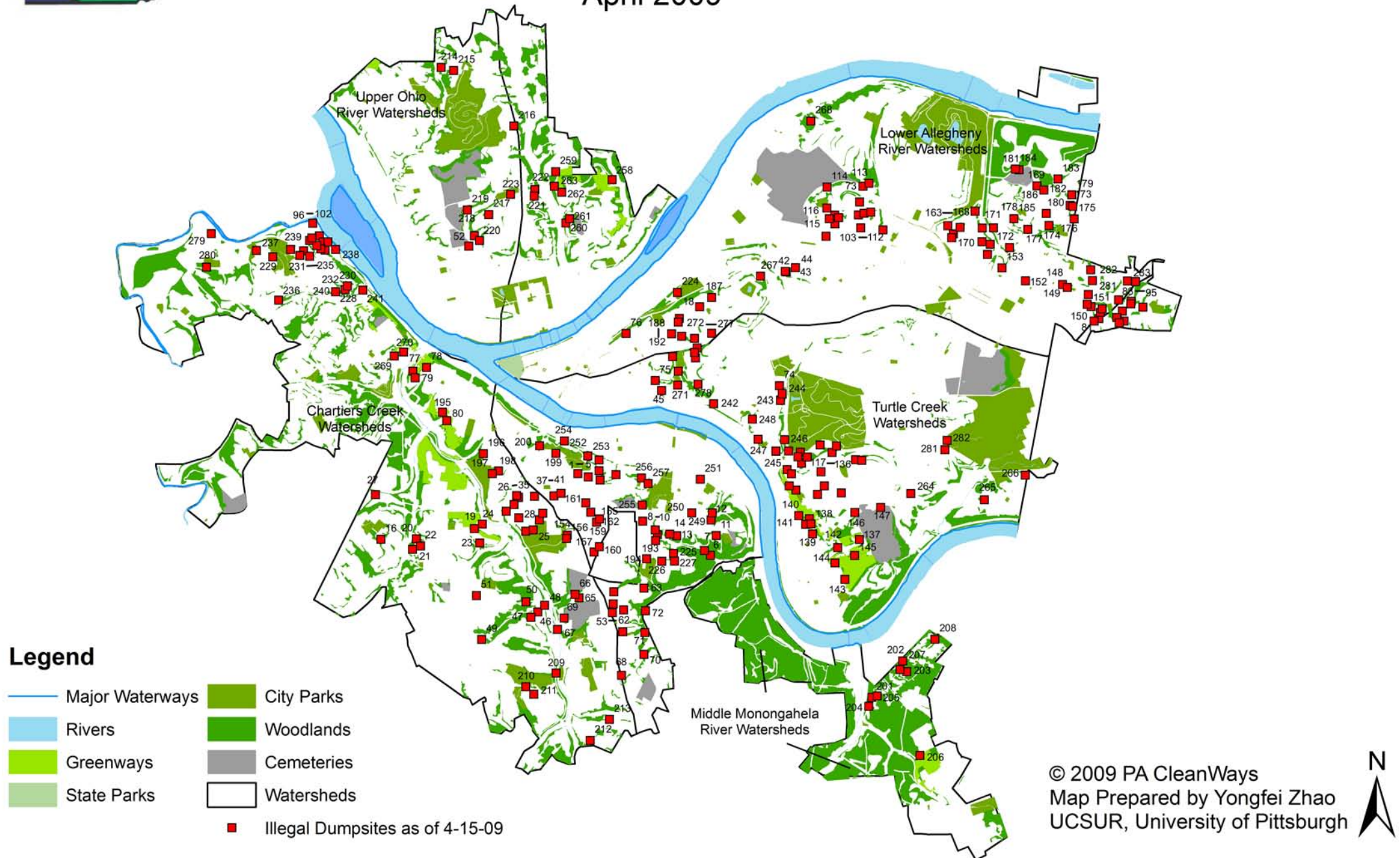
© 2009 PA CleanWays
Map Prepared by Yongfei Zhao
UCSUR, University of Pittsburgh





City of Pittsburgh, Pennsylvania Illegal Dumpsites and Environmental Features April 2009

Attachment 3



Illegal Dumpsites and Trash Collection by Neighborhood**

Neighborhood	Illegal Dumpsites	Calculated Tons*	Trash Collection	Curbside Recycling	Drop Off Recycling
Allegheny Central	0	0	X	X	
Allegheny West	0	0	X	X	
Allentown	5	5.125	X	X	
Arlington	9	17.5	X	X	
Arlington Heights	0	0	X	X	
Banksville	1	1	X	X	
Bedford Dwellings	1	1	X	X	
Beechview	6	8.5	X	X	
Beltzhoover	16	39.5	X	X	
Bloomfield	3	3	X	X	
Bluff	1	1	X	X	
Bon Air	0	0	X	X	
Brighton Heights	0	0	X	X	
Brookline	6	31.5	X	X	
California-Kirkbride	1	0.75	X	X	
Carrick	19	111.25	X	X	
Downtown	0	0	X	X	
Central Lawrenceville	0	0	X	X	
Central Northside	0	0	X	X	
Central Oakland	3	1.5	X	X	
Chartiers	0	0	X	X	
Chateau	0	0	X	X	
Crafton Heights	0	0	X	X	
Crawford Roberts-Hill	2	2.75	X	X	
Duquesne Heights	5	16	X	X	
East Allegheny	0	0	X	X	
East Carnegie	0	0	X	X	
East Hills	15	17.75	X	X	
East Liberty	0	0	X	X	X
Elliot	0	0	X	X	X
Esplen	7	15	X	X	
Fairywood	0	0	X	X	
Fineview	0	0	X	X	
Friendship	0	0	X	X	
Garfield	14	17	X	X	
Glen Hazel	0	0	X	X	
Greenfield	20	40.75	X	X	
Hays	0	0	X	X	
Hazelwood	11	50	X	X	X
Highland Park	0	0	X	X	
Homewood North	4	5.5	X	X	
Homewood South	3	3.5	X	X	
Homewood West	1	0.5	X	X	X
Knoxville	8	8	X	X	X
Larimer	10	8.75	X	X	
Lincoln-Lemington-Belmar	14	19	X	X	
Lincoln Place	0	0	X	X	
Lower Lawrenceville	0	0	X	X	
Manchester	0	0	X	X	
Marshall-Shadeland	0	0	X	X	
Middle Hill	6	9	X	X	
Morningside	0	0	X	X	
Mount Oliver	2	11	X	X	
Mount Washington	5	7.625	X	X	
New Homestead	8	19.5	X	X	
North Oakland	0	0	X	X	
North Point Breeze	0	0	X	X	
North Shore	0	0	X	X	
Northview Heights	0	0	X	X	
Oakwood	0	0	X	X	
Overbrook	5	3.125	X	X	
Perry North	3	7.25	X	X	X
Perry South	7	19.75	X	X	
Polish Hill	1	5	X	X	X
Point Breeze	0	0	X	X	
Regent Square	0	0	X	X	
Ridgemont	0	0	X	X	
Saint Clair	3	5	X	X	
Shadyside	0	0	X	X	

Neighborhood	Illegal Dumpsites	Calculated Tons*	Trash Collection	Curbside Recycling	Drop Off Recycling
Sheraden	14	28.75	X	X	
South Oakland	5	2.5	X	X	X
Southshore	0	0	X	X	
Southside Flats	0	0	X	X	
Southside Slopes	9	25.375	X	X	
Spring Garden	1	4	X	X	
Spring Hill	5	40.25	X	X	
Squirrel Hill North	0	0	X	X	
Squirrel Hill South	3	12.75	X	X	
Stanton Heights	1	0.5	X	X	
Strip District	0	0	X	X	
Summer Hill	0	0	X	X	
Swisshelm Park	2	2.5	X	X	
Terrace Village	7	4	X	X	
Troy Hill	0	0	X	X	
Upper Hill	1	1	X	X	
Upper Lawrenceville	1	1.5	X	X	
West End	2	35	X	X	X
West Oakland	1	2.5	X	X	
Westwood	0	0	X	X	
Windgap	2	2.5	X	X	

Fifty-three percent of Pittsburgh's neighborhoods have illegal dumping activity.

All of Pittsburgh's neighborhoods have trash collection.

All of Pittsburgh's neighborhoods have a curbside recycling program.

The City of Pittsburgh Public Works Centers, as well as 3 other centers, have drop off locations.

*Quantities assessed at time of survey were estimates based on what was visible.

**Information concerning mandatory trash collection, curbside recycling, and drop off recycling is deemed correct at time of printing and cannot be guaranteed due to changes in ordinances and funding in the City of Pittsburgh.

City of Pittsburgh IDS Site Characteristics by Neighborhood*

Neighborhood	Site Name	Site Number	Calculated Tons	Demographics	Distance from Waterway	Visibility from Roadway	Road Ownership	Terrain Type	Active
Allentown	Brosville Street	0002	3	Urban	No waterway nearby	No	Municipal	Extremely steep	Yes
Allentown	Ceves Way	0004	0.5	Urban	No waterway nearby	Yes	Municipal	Flat	No
Allentown	Eureka Street	0005	0.125	Urban	No waterway nearby	Yes	Municipal	Flat	Yes
Allentown	McCain Street	0003	1	Urban	No waterway nearby	Partial	Municipal	Gently sloped	Yes
Allentown	St. Martin Street	0001	0.5	Urban	No waterway nearby	Partial	Municipal	Medium slope	Yes
Arlington	Azul Street	0012	1.5	Urban	No waterway nearby	Yes	Municipal	Gently sloped	No
Arlington	Bassler Street	0011	0.5	Urban	No waterway nearby	Partial	Municipal	Gently sloped	No
Arlington	Jonquil Street	0010	0.5	Urban	No waterway nearby	No	Municipal	Medium slope	No
Arlington	Mountain Avenue	0009	2	Urban	50 to 100 ft	Yes	Municipal	Medium slope	Yes
Arlington	Parkwood Road Site 1	0006	3	Urban	More than 100 ft	No	Municipal	Steep slope	Yes
Arlington	Parkwood Road Site 2	0007	4	Urban	More than 100 ft	Yes	Municipal	Extremely steep	Yes
Arlington	Parkwood Road Site 3	0008	2.5	Urban	Within 50 ft	No	Municipal	Medium slope	No
Arlington	Rothman Street	0013	2	Urban	50 to 100 ft	Yes	Municipal	Gently sloped	Yes
Arlington	Swearingen Way	0014	1.5	Urban	No waterway nearby	No	Municipal	Extremely steep	Yes
Banksville	Medhurst Street	0016	1	Urban	No waterway nearby	Yes	Municipal	Gently sloped	Yes
Bedford Dwellings	Barnett Way	0018	1	Urban	No waterway nearby	Yes	Municipal	Flat	Yes
Beechview	Andick Way	0019	2	Urban	No waterway nearby	Yes	Municipal	Gently sloped	Yes
Beechview	Belesco Avenue	0022	1	Urban	No waterway nearby	Yes	Municipal	Gently sloped	Yes
Beechview	Canton Avenue	0021	1	Urban	No waterway nearby	Yes	Municipal	Medium slope	Yes
Beechview	Dawn Avenue	0024	1.5	Urban	No waterway nearby	Yes	Municipal	Flat	Yes
Beechview	Napoleon Avenue	0020	2	Urban	No waterway nearby	Yes	Municipal	Medium slope	Yes
Beechview	Platt Avenue	0023	1	Urban	No waterway nearby	Yes	Municipal	Medium slope	Yes
Beltzhoover	Anesbury at Banning Way	0041	1	Urban	No waterway nearby	Yes	Municipal	Gently sloped	Yes
Beltzhoover	Banning Way	0028	0.125	Urban	No waterway nearby	Yes	Municipal	Flat	Yes
Beltzhoover	Bernd Way	0038	0.25	Urban	No waterway nearby	Yes	Municipal	Flat	Yes
Beltzhoover	Blanco Way	0035	0.125	Urban	No waterway nearby	Yes	Municipal	Gently sloped	Yes
Beltzhoover	Boggston Avenue	0034	2.5	Urban	No waterway nearby	Yes	Municipal	Steep slope	Yes
Beltzhoover	Brice Way	0030	5	Urban	No waterway nearby	Yes	Municipal	Flat	Yes
Beltzhoover	Climax at Montooth	0033	2	Urban	No waterway nearby	Yes	Municipal	Gently sloped	Yes
Beltzhoover	Industry Street	0029	0.125	Urban	No waterway nearby	Yes	Municipal	Flat	Yes
Beltzhoover	Lehr Way	0037	5	Urban	No waterway nearby	Yes	Municipal	Flat	Yes
Beltzhoover	Letzkus Way	0026	0.25	Urban	No waterway nearby	Yes	Municipal	Flat	Yes

City of Pittsburgh IDS Site Characteristics by Neighborhood*

Neighborhood	Site Name	Site Number	Calculated Tons	Demographics	Distance from Waterway	Visibility from Roadway	Road Ownership	Terrain Type	Active
Beltzhoover	Loyal Way Site 1	0027	1.5	Urban	No waterway nearby	Yes	Municipal	Gently sloped	Yes
Beltzhoover	Loyal Way Site 2	0039	4	Urban	No waterway nearby	Yes	Municipal	Gently sloped	Yes
Beltzhoover	Orient Way	0040	4	Urban	No waterway nearby	Yes	Municipal	Gently sloped	Yes
Beltzhoover	Proxim Way at Delmont	0032	10	Urban	No waterway nearby	Yes	Municipal	Gently sloped	Yes
Beltzhoover	Taft and Montooth	0025	2.5	Urban	No waterway nearby	Yes	Municipal	Steep slope	Yes
Beltzhoover	Taft at Schuck Way	0031	1	Urban	No waterway nearby	Yes	Municipal	Medium slope	Yes
Bloomfield	Aloe at South Mathilda	0043	1	Urban	No waterway nearby	No	Municipal	Steep slope	No
Bloomfield	Juniper	0044	1	Urban	No waterway nearby	No	Municipal	Steep slope	No
Bloomfield	Juniper at Edmond	0042	1	Urban	No waterway nearby	No	Municipal	Steep slope	No
Bluff	Watson Street	0045	1	Urban	No waterway nearby	Yes	Municipal	Flat	Yes
Brookline	Dunster Street	0050	0.5	Urban	No waterway nearby	Yes	Municipal	Medium slope	Yes
Brookline	Edgebrook Avenue	0048	25	Urban	In Waterway/Wetland	Partial	Municipal	Extremely steep	Yes
Brookline	Heber Way	0046	0.5	Urban	No waterway nearby	Yes	Municipal	Medium slope	Yes
Brookline	Lapeer Way	0051	0.25	Urban	No waterway nearby	Yes	Municipal	Flat	Yes
Brookline	Starkamp Street	0049	0.25	Urban	More than 100 ft	Yes	Municipal	Medium slope	Yes
Brookline	Zimmerman Street	0047	5	Urban	No waterway nearby	Yes	Municipal	Medium slope	Yes
California-Kirkbride	Morrison Street	0052	0.75	Urban	No waterway nearby	Partial	Municipal	Medium slope	Yes
Carrick	Alplaus Street	0055	10	Urban	More than 100 ft	Yes	Municipal	Extremely steep	Yes
Carrick	Alries Street	0058	10	Urban	No waterway nearby	Partial	Municipal	Extremely steep	Yes
Carrick	Athena Way	0068	2	Urban	No waterway nearby	Yes	Municipal	Gently sloped	Yes
Carrick	Becks Run Road Site 1	0070	5	Urban	More than 100 ft	Yes	Municipal	Gently sloped	Yes
Carrick	Becks Run Road Site 2	0071	0.25	Urban	More than 100 ft	Yes	Municipal	Gently sloped	Yes
Carrick	Brimingham Avenue	0061	0.5	Urban	No waterway nearby	Partial	Municipal	Medium slope	Yes
Carrick	Brook Street	0066	5	Urban	No waterway nearby	Yes	Municipal	Extremely steep	Yes
Carrick	Cloverdale Street	0069	0.125	Urban	No waterway nearby	Yes	Municipal	Gently sloped	Yes
Carrick	Downing Street	0072	5	Urban	No waterway nearby	Yes	Municipal	Extremely steep	Yes
Carrick	East Cherry Hill Street	0057	0.125	Urban	No waterway nearby	Yes	Municipal	Gently sloped	Yes
Carrick	East Meyers Street	0059	0.125	Urban	No waterway nearby	Yes	Municipal	Gently sloped	Yes
Carrick	Laughlin Avenue Site 1	0062	2.5	Urban	Within 50 ft	Partial	Municipal	Gently sloped	Yes
Carrick	Laughlin Avenue Site 2	0063	0.125	Urban	No waterway nearby	Yes	Municipal	Gently sloped	No
Carrick	Minooka Street	0065	5	Urban	No waterway nearby	Partial	Municipal	Steep slope	Yes
Carrick	Pandora Way	0056	0.25	Urban	No waterway nearby	Yes	Municipal	Medium slope	Yes

City of Pittsburgh IDS Site Characteristics by Neighborhood*

Neighborhood	Site Name	Site Number	Calculated Tons	Demographics	Distance from Waterway	Visibility from Roadway	Road Ownership	Terrain Type	Active
Carrick	Plummet Way	0053	0.25	Urban	No waterway nearby	Yes	Municipal	Gently sloped	Yes
Carrick	Poplar Grove	0054	5	Urban	Within 50 ft	Yes	Municipal	Gently sloped	Yes
Carrick	Romance Way	0060	10	Urban	No waterway nearby	Yes	Municipal	Gently sloped	Yes
Carrick	Saw Mill Run	0067	50	Urban	More than 100 ft	Yes	State	Gently sloped	Yes
Central Oakland	Bolair Way at Parkview	0243	0.5	Urban	More than 100 ft	No	Municipal	Steep slope	No
Central Oakland	Dawson and Diulus Way	0074	0.5	Urban	No waterway nearby	No	Municipal	Medium slope	No
Central Oakland	Oakland Square	0244	0.5	Urban	More than 100 ft	Yes	Municipal	Steep slope	No
Crawford Roberts-Hill	Arcena Street	0076	2	Urban	No waterway nearby	Yes	Municipal	Steep slope	Yes
Crawford Roberts-Hill	Diaz Way	0075	0.75	Urban	No waterway nearby	Yes	Municipal	Gently sloped	Yes
Duquesne Heights	Bradley Street	0078	1.5	Urban	No waterway nearby	Yes	Municipal	Gently sloped	Yes
Duquesne Heights	Greenleaf Street	0077	4	Urban	No waterway nearby	Yes	Municipal	Steep slope	Yes
Duquesne Heights	Lizardi Way	0079	2	Urban	No waterway nearby	Yes	Municipal	Gently sloped	Yes
Duquesne Heights	Sweetbriar Street	0080	2.5	Urban	No waterway nearby	Yes	Municipal	Steep slope	Yes
Duquesne Heights	Wyola Street	0195	6	Urban	No waterway nearby	Yes	Municipal	Medium slope	Yes
East Hills	Dornbush Street	0087	0.25	Urban	No waterway nearby	Yes	Municipal	Steep slope	Yes
East Hills	East Hills Drive	0095	0.5	Urban	No waterway nearby	Yes	Municipal	Medium slope	Yes
East Hills	Fahnestock Avenue	0090	0.5	Urban	No waterway nearby	Yes	Municipal	Gently sloped	Yes
East Hills	Fargo Way	0093	3	Urban	No waterway nearby	Partial	Municipal	Gently sloped	Yes
East Hills	Frankstown Avenue	0283	4	Urban	No waterway nearby	Partial	Municipal	Gently sloped	Yes
East Hills	Hackett Way	0091	1.5	Urban	No waterway nearby	Yes	Municipal	Flat	Yes
East Hills	Haverhill Street	0094	2	Urban	No waterway nearby	Partial	Municipal	Extremely steep	Yes
East Hills	Karl Street	0081	0.5	Urban	No waterway nearby	Yes	Municipal	Medium slope	No
East Hills	Rolfe Street	0084	0.5	Urban	No waterway nearby	Partial	Municipal	Gently sloped	Yes
East Hills	Seaqirt Street	0089	1	Urban	No waterway nearby	Partial	Municipal	Gently sloped	Yes
East Hills	Sickles Street	0092	0.5	Urban	No waterway nearby	Yes	Municipal	Flat	Yes
East Hills	Tokay Street	0088	0.5	Urban	No waterway nearby	Yes	Municipal	Flat	No
East Hills	Wilkinsburg Avenue Site 1	0083	1	Urban	No waterway nearby	Partial	Municipal	Gently sloped	Yes
East Hills	Wilkinsburg Avenue Site 2	0085	0.5	Urban	No waterway nearby	Partial	Municipal	Gently sloped	Yes
East Hills	Wilkinsburg Avenue Site 3	0086	1.5	Urban	No waterway nearby	Yes	Municipal	Gently sloped	Yes
Esplen	Earl Street	0102	1.5	Urban	No waterway nearby	Yes	Municipal	Flat	Yes
Esplen	Espen Way Site 1	0099	2.5	Urban	No waterway nearby	Yes	Municipal	Flat	Yes
Esplen	Espen Way Site 2	0101	0.5	Urban	No waterway nearby	Yes	Municipal	Gently sloped	Yes

City of Pittsburgh IDS Site Characteristics by Neighborhood*

Neighborhood	Site Name	Site Number	Calculated Tons	Demographics	Distance from Waterway	Visibility from Roadway	Road Ownership	Terrain Type	Active
Esplen	Radcliffe Street	0097	1.5	Urban	No waterway nearby	No	Municipal	Steep slope	Yes
Esplen	Saginaw Street	0100	1	Urban	No waterway nearby	Yes	Municipal	Flat	Yes
Esplen	Sloan Way Site 1	0098	6	Urban	No waterway nearby	Yes	Municipal	Flat	Yes
Esplen	Sloan Way Site 2	0096	2	Urban	No waterway nearby	Yes	Municipal	Flat	Yes
Garfield	Alhambra Way	0109	1	Urban	No waterway nearby	Yes	Municipal	Flat	Yes
Garfield	Ardary Street	0108	0.5	Urban	No waterway nearby	Yes	Municipal	Gently sloped	Yes
Garfield	Broad Street	0104	0.5	Urban	No waterway nearby	Yes	Municipal	Flat	Yes
Garfield	Brown Way	0105	1	Urban	No waterway nearby	Yes	Municipal	Gently sloped	Yes
Garfield	Cornwall Street	0112	1.5	Urban	No waterway nearby	Partial	Municipal	Gently sloped	Yes
Garfield	Hillcrest Street Site 1	0107	0.75	Urban	No waterway nearby	Yes	Municipal	Flat	Yes
Garfield	Hillcrest Street Site 2	0115	0.5	Urban	No waterway nearby	Partial	Municipal	Medium slope	Yes
Garfield	Jordan Way	0110	2.5	Urban	No waterway nearby	Yes	Municipal	Gently sloped	Yes
Garfield	Kincaid Street	0111	1.5	Urban	No waterway nearby	Partial	Municipal	Medium slope	Yes
Garfield	Mora Way Site 1	0113	1.5	Urban	No waterway nearby	Partial	Municipal	Medium slope	Yes
Garfield	Mora Way Site 2	0114	0.75	Urban	No waterway nearby	Partial	Municipal	Medium slope	Yes
Garfield	North Negley Avenue	0103	1	Urban	No waterway nearby	Yes	Municipal	Flat	Yes
Garfield	Shamrock Way Site 1	0106	1	Urban	No waterway nearby	Yes	Municipal	Flat	Yes
Garfield	Shamrock Way Site 2	0116	3	Urban	No waterway nearby	Partial	Municipal	Flat	Yes
Greenfield	Bigelow Overlook	0119	2.5	Urban	No waterway nearby	Partial	Municipal	Medium slope	No
Greenfield	Boundary Street	0125	1	Urban	In Waterway/Wetland	Partial	Municipal	Flat	No
Greenfield	Braywood Way	0136	1.25	Urban	No waterway nearby	Yes	Municipal	Flat	Yes
Greenfield	Flemington Street	0135	1.5	Urban	No waterway nearby	No	Municipal	Medium slope	Yes
Greenfield	Forrester Way	0120	3	Urban	No waterway nearby	Partial	Municipal	Steep slope	Yes
Greenfield	Greenfield & Lydia	0118	0.5	Urban	No waterway nearby	Yes	Municipal	Flat	No
Greenfield	Haworth Road	0123	7.5	Urban	More than 100 ft	Partial	Municipal	Medium slope	Yes
Greenfield	Ibex Way	0132	1	Urban	No waterway nearby	Yes	Municipal	Flat	Yes
Greenfield	Ivondale Street	0129	2.5	Urban	No waterway nearby	Yes	Municipal	Medium slope	Yes
Greenfield	Monteiro Street	0134	7.5	Urban	No waterway nearby	Partial	Municipal	Steep slope	Yes
Greenfield	Moose Way	0131	1	Urban	No waterway nearby	Yes	Municipal	Gently sloped	Yes
Greenfield	Panther Hollow Soccer Field	0124	1	Urban	No waterway nearby	Partial	Municipal	Gently sloped	Yes
Greenfield	Saline Lot	0130	1	Urban	No waterway nearby	Yes	Municipal	Gently sloped	No
Greenfield	Saline Street Site 1	0126	0.5	Urban	No waterway nearby	Partial	Municipal	Flat	Yes

City of Pittsburgh IDS Site Characteristics by Neighborhood*

Neighborhood	Site Name	Site Number	Calculated Tons	Demographics	Distance from Waterway	Visibility from Roadway	Road Ownership	Terrain Type	Active
Greenfield	Saline Street Site 2	0127	0.5	Urban	No waterway nearby	Yes	Municipal	Flat	Yes
Greenfield	Waldeck Street	0121	3	Urban	No waterway nearby	Yes	Municipal	Medium slope	Yes
Greenfield	Wasser Way	0133	1	Urban	No waterway nearby	Yes	Municipal	Flat	Yes
Greenfield	Whitaker Street	0128	2	Urban	No waterway nearby	Yes	Municipal	Medium slope	Yes
Greenfield	Winterburn Cliff	0117	1.5	Urban	No waterway nearby	No	Municipal	Extremely steep	Yes
Greenfield	Yoder-Tunstall	0122	1	Urban	No waterway nearby	Yes	Municipal	Medium slope	Yes
Hazelwood	Chatsworth Street	0140	2.5	Urban	No waterway nearby	Partial	Municipal	Gently sloped	Yes
Hazelwood	Clarion Street	0146	0.5	Urban	No waterway nearby	Yes	Municipal	Flat	No
Hazelwood	East Elizabeth Street	0143	1.25	Urban	No waterway nearby	Partial	Municipal	Flat	Yes
Hazelwood	Frayne Street	0147	1	Urban	No waterway nearby	Partial	Municipal	Flat	Yes
Hazelwood	Home Rule Street	0138	2.5	Urban	No waterway nearby	Partial	Municipal	Medium slope	Yes
Hazelwood	Kinglake Street	0145	1.75	Urban	No waterway nearby	Partial	Municipal	Flat	Yes
Hazelwood	Monongahela Street	0139	1	Urban	No waterway nearby	Partial	Municipal	Flat	Yes
Hazelwood	Nansen Street	0137	0.5	Urban	No waterway nearby	Yes	Municipal	Flat	Yes
Hazelwood	Odin Street	0144	12.5	Urban	No waterway nearby	Partial	Municipal	Gently sloped	Yes
Hazelwood	Sylvan Avenue Site 1	0141	25	Urban	No waterway nearby	Partial	Municipal	Medium slope	Yes
Hazelwood	Sylvan Avenue Site 2	0142	1.5	Urban	No waterway nearby	Partial	Municipal	Gently sloped	Yes
Homewood North	Forest Way Site 1	0148	1	Urban	No waterway nearby	Yes	Municipal	Flat	No
Homewood North	Forest Way Site 2	0149	1	Urban	No waterway nearby	Yes	Municipal	Flat	Yes
Homewood North	North Wheeler Street	0282	1.5	Urban	No waterway nearby	Yes	Municipal	Flat	Yes
Homewood North	North Wheeler Street and Ferndale Str	0281	2	Urban	No waterway nearby	Partial	Municipal	Gently sloped	Yes
Homewood South	Frankstown Ave. and Tyson Street	0151	1	Urban	No waterway nearby	Yes	Municipal	Gently sloped	Yes
Homewood South	North Lang Avenue	0152	1.5	Urban	No waterway nearby	Yes	Municipal	Flat	Yes
Homewood South	Oakwood Street	0150	1	Urban	No waterway nearby	Partial	Municipal	Flat	Yes
Homewood West	McCombs Street	0153	0.5	Urban	No waterway nearby	No	Municipal	Steep slope	Yes
Knoxville	Cedarhurst Street	0161	0.5	Urban	No waterway nearby	Yes	Municipal	Gently sloped	Yes
Knoxville	Elsinsburg Way	0155	0.5	Urban	No waterway nearby	Yes	Municipal	Flat	Yes
Knoxville	Lorna Way	0154	2	Urban	No waterway nearby	Yes	Municipal	Steep slope	Yes
Knoxville	Michigan Way	0162	1	Urban	No waterway nearby	Yes	Municipal	Flat	Yes
Knoxville	Parklow Street	0156	0.5	Urban	No waterway nearby	Yes	Municipal	Medium slope	Yes
Knoxville	Rentz Way	0159	1.5	Urban	No waterway nearby	Yes	Municipal	Flat	Yes
Knoxville	Roll Way	0157	1.5	Urban	No waterway nearby	Yes	Municipal	Gently sloped	Yes

City of Pittsburgh IDS Site Characteristics by Neighborhood*

Neighborhood	Site Name	Site Number	Calculated Tons	Demographics	Distance from Waterway	Visibility from Roadway	Road Ownership	Terrain Type	Active
Knoxville	Sylvania Way	0160	0.5	Urban	No waterway nearby	Partial	Municipal	Flat	Yes
Larimer	Braden and Dodge	0164	0.5	Urban	No waterway nearby	Yes	Municipal	Flat	No
Larimer	Hooker Street at Thompson	0166	0.5	Urban	No waterway nearby	Partial	Municipal	Medium slope	No
Larimer	Lenora Way	0163	1	Urban	No waterway nearby	Partial	Municipal	Medium slope	Yes
Larimer	Paulson Avenue	0165	1.5	Urban	No waterway nearby	Partial	Municipal	Steep slope	No
Larimer	Renfrew Street	0167	0.5	Urban	No waterway nearby	Partial	Municipal	Medium slope	No
Larimer	Tripod Way	0172	0.5	Urban	No waterway nearby	Yes	Municipal	Flat	No
Larimer	Victor Way	0170	1	Urban	No waterway nearby	Yes	Municipal	Flat	No
Larimer	Wiltsie Street	0169	1.25	Urban	No waterway nearby	Partial	Municipal	Steep slope	Yes
Larimer	Winslow at Larimer	0168	1	Urban	No waterway nearby	Yes	Municipal	Flat	No
Larimer	Xenia Way	0171	1	Urban	No waterway nearby	Yes	Municipal	Flat	No
Lincoln-Lemington-Belmar	Arbor Street	0174	0.5	Urban	No waterway nearby	Yes	Municipal	Medium slope	Yes
Lincoln-Lemington-Belmar	Brushton Avenue	0175	2	Urban	Within 50 ft	Yes	Municipal	Medium slope	Yes
Lincoln-Lemington-Belmar	Dravo Way	0173	5	Urban	No waterway nearby	Yes	Municipal	Medium slope	No
Lincoln-Lemington-Belmar	East Chester	0182	0.5	Urban	No waterway nearby	Yes	Municipal	Flat	No
Lincoln-Lemington-Belmar	Ebel Street	0183	1.5	Urban	No waterway nearby	Partial	Municipal	Steep slope	No
Lincoln-Lemington-Belmar	Gladefield Street	0176	2	Urban	Within 50 ft	Yes	Municipal	Medium slope	No
Lincoln-Lemington-Belmar	Gopher Street	0186	1	Urban	No waterway nearby	Yes	Municipal	Medium slope	No
Lincoln-Lemington-Belmar	Highland Avenue Site 1	0184	0.5	Urban	No waterway nearby	Yes	Municipal	Gently sloped	No
Lincoln-Lemington-Belmar	Highland Avenue Site 2	0181	0.5	Urban	No waterway nearby	No	Municipal	Gently sloped	No
Lincoln-Lemington-Belmar	Laxton Street	0177	1	Urban	No waterway nearby	Partial	Municipal	Steep slope	No
Lincoln-Lemington-Belmar	Owassa Way	0185	2	Urban	No waterway nearby	Yes	Municipal	Medium slope	No
Lincoln-Lemington-Belmar	Rowan at Paulson	0178	1.5	Urban	No waterway nearby	Yes	Municipal	Steep slope	No
Lincoln-Lemington-Belmar	Verona Boulevard	0179	0.5	Urban	No waterway nearby	Partial	Municipal	Steep slope	No
Lincoln-Lemington-Belmar	Westmoreland Ave / Toga Way	0180	0.5	Urban	No waterway nearby	Partial	Municipal	Steep slope	No
Middle Hill	Elba Street	0192	1	Urban	No waterway nearby	Partial	Municipal	Steep slope	Yes
Middle Hill	Mahon Street	0188	0.5	Urban	No waterway nearby	Yes	Municipal	Gently sloped	Yes
Middle Hill	Bedford Avenue	0187	1.5	Urban	No waterway nearby	Yes	Municipal	Medium slope	Yes
Middle Hill	Duff Street	0189	1	Urban	No waterway nearby	Yes	Municipal	Gently sloped	Yes
Middle Hill	McClaren Street	0191	2	Urban	No waterway nearby	Partial	Municipal	Steep slope	Yes
Middle Hill	Webster Avenue	0190	3	Urban	No waterway nearby	Yes	Municipal	Flat	Yes
Mount Oliver	Rectenwald Street	0194	10	Urban	No waterway nearby	Yes	Municipal	Flat	No

City of Pittsburgh IDS Site Characteristics by Neighborhood*

Neighborhood	Site Name	Site Number	Calculated Tons	Demographics	Distance from Waterway	Visibility from Roadway	Road Ownership	Terrain Type	Active
Mount Oliver	St. Joseph Street	0193	1	Urban	No waterway nearby	Partial	Municipal	Medium slope	Yes
Mount Washington	Bailey Avenue	0199	1	Urban	No waterway nearby	Partial	Municipal	Medium slope	Yes
Mount Washington	Ennis Street	0196	0.125	Urban	No waterway nearby	Yes	Municipal	Gently sloped	Yes
Mount Washington	Penelope and Ottawa Street	0197	1	Urban	No waterway nearby	Yes	Municipal	Gently sloped	Yes
Mount Washington	Penelope Street	0198	2.5	Urban	No waterway nearby	Yes	Municipal	Gently sloped	Yes
Mount Washington	William Street	0200	3	Urban	No waterway nearby	Partial	Municipal	Steep slope	Yes
New Homestead	Armorhill Avenue	0202	3	Urban	No waterway nearby	No	Municipal	Steep slope	Yes
New Homestead	Basic Avenue	0208	1	Urban	In Waterway/Wetland	No	Municipal	Steep slope	Yes
New Homestead	Doerville Avenue	0204	1	Urban	No waterway nearby	Partial	Municipal	Extremely steep	Yes
New Homestead	Ingot Avenue	0207	1	Urban	No waterway nearby	Yes	Municipal	Gently sloped	Yes
New Homestead	Moorey Road	0206	0.5	Urban	No waterway nearby	No	Municipal	Medium slope	Yes
New Homestead	Overboro Street	0201	7.5	Urban	No waterway nearby	No	Municipal	Steep slope	Yes
New Homestead	Panarama Baseball Field	0203	3.5	Urban	No waterway nearby	Yes	Municipal	Flat	Yes
New Homestead	West Circle Avenue	0205	2	Urban	No waterway nearby	Yes	Municipal	Medium slope	Yes
Overbrook	Glenbury Street Site 1	0210	0.5	Urban	No waterway nearby	Yes	Municipal	Medium slope	Yes
Overbrook	Glenbury Street Site 2	0211	0.5	Urban	No waterway nearby	Yes	Municipal	Medium slope	Yes
Overbrook	Horning Street	0213	0.125	Urban	No waterway nearby	Yes	Municipal	Gently sloped	Yes
Overbrook	Jacob Street	0209	1.5	Urban	More than 100 ft	Yes	Municipal	Extremely steep	Yes
Overbrook	Mullooly Street	0212	0.5	Urban	50 to 100 ft	Yes	Municipal	Extremely steep	Yes
Perry North	Dalton Avenue	0214	0.75	Urban	No waterway nearby	Partial	Municipal	Steep slope	Yes
Perry North	Menlo Street	0215	3.5	Urban	No waterway nearby	Partial	Municipal	Medium slope	Yes
Perry North	Watson Boulevard	0216	3	Urban	No waterway nearby	No	Municipal	Steep slope	Yes
Perry South	Brule Street	0221	7.5	Urban	No waterway nearby	No	Municipal	Medium slope	Yes
Perry South	Irwin Avenue	0220	0.5	Urban	No waterway nearby	Yes	Municipal	Flat	Yes
Perry South	Kenwood Avenue/ Canter Way	0223	0.25	Urban	No waterway nearby	Partial	Municipal	Medium slope	Yes
Perry South	Lyzell Street	0222	6	Urban	No waterway nearby	No	Municipal	Medium slope	Yes
Perry South	Metcalf Street	0218	2	Urban	No waterway nearby	Yes	Municipal	Flat	Yes
Perry South	Russell Street	0217	1.5	Urban	No waterway nearby	Partial	Municipal	Gently sloped	Yes
Perry South	Snyder Street	0219	2	Urban	No waterway nearby	Yes	Municipal	Gently sloped	Yes
Polish Hill	Kenney Way	0224	5	Urban	No waterway nearby	Partial	Municipal	Medium slope	Yes
Saint Clair	Fisher Street	0225	3	Urban	No waterway nearby	Yes	Municipal	Medium slope	Yes
Saint Clair	Henger Street	0227	1	Urban	No waterway nearby	Yes	Municipal	Gently sloped	Yes

City of Pittsburgh IDS Site Characteristics by Neighborhood*

Neighborhood	Site Name	Site Number	Calculated Tons	Demographics	Distance from Waterway	Visibility from Roadway	Road Ownership	Terrain Type	Active
Saint Clair	Schuler Street	0226	1	Urban	No waterway nearby	Yes	Municipal	Flat	Yes
Sheraden	Adon Street	0229	1	Urban	No waterway nearby	Partial	Municipal	Steep slope	Yes
Sheraden	Brevet Way	0239	0.5	Urban	No waterway nearby	Yes	Municipal	Steep slope	Yes
Sheraden	Brunot Avenue Site 1	0231	1.5	Urban	More than 100 ft	Partial	Municipal	Steep slope	Yes
Sheraden	Brunot Avenue Site 2	0234	1.5	Urban	No waterway nearby	Partial	Municipal	Medium slope	Yes
Sheraden	Glenmawr Avenue Site 1	0232	3	Urban	No waterway nearby	Partial	Municipal	Extremely steep	Yes
Sheraden	Glenmawr Avenue Site 2	0233	1.5	Urban	No waterway nearby	Partial	Municipal	Medium slope	No
Sheraden	Glenmawr Avenue Site 3	0241	0.25	Urban	No waterway nearby	Yes	Municipal	Flat	No
Sheraden	Hillsboro Avenue	0237	1.5	Urban	No waterway nearby	Partial	Municipal	Steep slope	Yes
Sheraden	McGonagle Park	0235	1.5	Urban	No waterway nearby	No	Municipal	Medium slope	Yes
Sheraden	Merwin Avenue	0228	2.5	Urban	No waterway nearby	Partial	Municipal	Extremely steep	No
Sheraden	Motor Street	0236	4	Urban	No waterway nearby	Partial	Municipal	Extremely steep	Yes
Sheraden	Slope Way	0238	7.5	Urban	No waterway nearby	Partial	Municipal	Steep slope	Yes
Sheraden	Stadium Street	0240	1.5	Urban	No waterway nearby	Yes	Municipal	Extremely steep	Yes
Sheraden	Stafford Street	0230	1	Urban	No waterway nearby	Partial	Municipal	Gently sloped	Yes
South Oakland	Bohem Street	0246	0.5	Urban	No waterway nearby	No	Municipal	Steep slope	No
South Oakland	Frazier Street	0245	0.5	Urban	No waterway nearby	No	Municipal	Gently sloped	No
South Oakland	Lawn Street	0242	0.5	Urban	No waterway nearby	No	Municipal	Medium slope	No
South Oakland	Romeo Street	0248	0.5	Urban	No waterway nearby	No	Municipal	Medium slope	No
South Oakland	Wakefield Street	0247	0.5	Urban	No waterway nearby	No	Municipal	Medium slope	No
Southside Slopes	Arlington Avenue Site 1	0249	2.5	Urban	No waterway nearby	Partial	Municipal	Medium slope	Yes
Southside Slopes	Arlington Avenue Site 2	0254	1	Urban	No waterway nearby	No	Municipal	Steep slope	Yes
Southside Slopes	Baldauf Street	0256	0.25	Urban	No waterway nearby	No	Municipal	Medium slope	Yes
Southside Slopes	Josephine Street	0250	5	Urban	No waterway nearby	Partial	Municipal	Extremely steep	Yes
Southside Slopes	McCord Street	0251	0.5	Urban	No waterway nearby	No	Municipal	Medium slope	Yes
Southside Slopes	Newton Street Site 1	0252	15	Urban	No waterway nearby	Partial	Municipal	Steep slope	Yes
Southside Slopes	Newton Street Site 2	0253	0.125	Urban	No waterway nearby	No	Municipal	Gently sloped	No
Southside Slopes	Oporto Street	0257	0.25	Urban	No waterway nearby	No	Municipal	Extremely steep	Yes
Southside Slopes	St. Patrick Street	0255	0.75	Urban	No waterway nearby	No	Municipal	Steep slope	Yes
Spring Garden	Mutzig Street	0258	4	Urban	No waterway nearby	No	Municipal	Steep slope	No
Spring Hill	Brahm Street	0260	6	Urban	No waterway nearby	No	Municipal	Steep slope	Yes
Spring Hill	Essen and Sunset Street	0259	7.5	Urban	No waterway nearby	No	Municipal	Medium slope	Yes

City of Pittsburgh IDS Site Characteristics by Neighborhood*

Neighborhood	Site Name	Site Number	Calculated Tons	Demographics	Distance from Waterway	Visibility from Roadway	Road Ownership	Terrain Type	Active
Spring Hill	Gershon Street	0263	22.5	Urban	No waterway nearby	Partial	Municipal	Medium slope	Yes
Spring Hill	Overbeck Street	0261	4	Urban	Within 50 ft	No	Municipal	Medium slope	Yes
Spring Hill	Sunset Avenue	0262	0.25	Urban	No waterway nearby	Partial	Municipal	Gently sloped	Yes
Squirrel Hill South	Beechwood Boulevard Site 1	0281	10	Urban	No waterway nearby	Partial	Municipal	Medium slope	Yes
Squirrel Hill South	Beechwood Boulevard Site 2	0282	2	Urban	No waterway nearby	Partial	Municipal	Medium slope	Yes
Squirrel Hill South	Landview Road	0264	0.75	Urban	No waterway nearby	Partial	Municipal	Medium slope	Yes
Stanton Heights	Mossfield Road	0073	0.5	Urban	No waterway nearby	Yes	Municipal	Flat	Yes
Swisshelm Park	Oak Grove Avenue	0266	1	Urban	No waterway nearby	Partial	Municipal	Gently sloped	No
Swisshelm Park	Ober Street	0265	1.5	Urban	No waterway nearby	Yes	Municipal	Flat	Yes
Terrace Village	Bentley Drive	0273	0.5	Urban	No waterway nearby	Partial	Municipal	Medium slope	No
Terrace Village	Brackenridge Street	0272	1	Urban	No waterway nearby	Yes	Municipal	Medium slope	No
Terrace Village	Burrows at Waring Court	0275	0.5	Urban	No waterway nearby	Yes	Municipal	Flat	No
Terrace Village	Burrows Street	0278	0.5	Urban	No waterway nearby	Yes	Municipal	Flat	No
Terrace Village	Kirkpatrick Street	0276	0.5	Urban	No waterway nearby	Yes	Municipal	Gently sloped	No
Terrace Village	Morgan Street	0277	0.5	Urban	No waterway nearby	Yes	Municipal	Flat	No
Terrace Village	Waring Court	0274	0.5	Urban	No waterway nearby	Yes	Municipal	Flat	No
Upper Hill	Blessing Street	0267	1	Urban	No waterway nearby	Yes	Municipal	Medium slope	Yes
Upper Lawrenceville	56th Street	0268	1.5	Urban	No waterway nearby	No	Municipal	Medium slope	Yes
West End	Planet Street Site 1	0270	12.5	Urban	No waterway nearby	Partial	Municipal	Flat	Yes
West End	Planet Street Site 2	0269	22.5	Urban	No waterway nearby	Partial	Municipal	Steep slope	Yes
West Oakland	Orr Street	0271	2.5	Urban	No waterway nearby	Yes	Municipal	Flat	No
Windgap	Summerdale Street	0280	2	Urban	No waterway nearby	Yes	Municipal	Flat	Yes
Windgap	Youghiogheny Street	0279	0.5	Urban	No waterway nearby	Yes	Municipal	Flat	Yes

Total Number of Sites: 279

Total Calculated Tons: 676.38

* Characteristics assessed at time of survey were based on what was visible.

Attachment 6

City of Pittsburgh Illegal Dump Survey Waste Characteristics by Neighborhood*

Neighborhood	Site Name	Site Number	Calculated Tons	Bagged Trash	Household Trash	Recyclables	HHW	Tires	Clean Fill	C_D Waste	Yard Waste	White Goods	Electronics	Televisions	Furniture	Mattresses	Vehicle Parts	Car Batteries
Allentown	Brosville Street	0002	3	Yes	No	Yes	Yes	30	Yes	Yes	Yes	0	0	0	1	0	No	0
Allentown	Ceves Way	0004	0.5	Yes	No	No	No	0	No	Yes	No	0	0	0	0	0	No	0
Allentown	Eureka Street	0005	0.125	Yes	No	Yes	No	3	No	Yes	No	0	0	0	0	0	No	0
Allentown	McCain Street	0003	1	Yes	No	Yes	Yes	2	Yes	Yes	Yes	0	0	0	0	0	No	0
Allentown	St. Martin Street	0001	0.5	No	No	No	Yes	6	Yes	Yes	Yes	0	0	0	0	0	No	0
Arlington	Azul Street	0012	1.5	Yes	No	No	Yes	10	Yes	Yes	No	1	0	0	0	0	Yes	0
Arlington	Bassler Street	0011	0.5	Yes	No	Yes	No	5	No	Yes	Yes	0	0	0	0	0	No	0
Arlington	Jonquil Street	0010	0.5	No	No	Yes	No	5	Yes	No	No	0	0	0	0	0	Yes	0
Arlington	Mountain Avenue	0009	2	No	No	Yes	Yes	15	Yes	Yes	No	0	0	0	0	0	No	0
Arlington	Parkwood Road Site 1	0006	3	No	No	Yes	No	1	No	Yes	Yes	0	0	0	0	0	No	0
Arlington	Parkwood Road Site 2	0007	4	No	No	No	Yes	0	Yes	Yes	No	0	0	0	0	0	No	0
Arlington	Parkwood Road Site 3	0008	2.5	No	No	Yes	No	10	Yes	Yes	No	0	0	0	0	0	No	0
Arlington	Rothman Street	0013	2	No	No	No	No	0	Yes	Yes	Yes	0	0	0	0	0	No	0
Arlington	Swearingen Way	0014	1.5	No	No	Yes	No	7	No	Yes	Yes	0	0	0	0	0	No	0
Banksville	Medhurst Street	0016	1	No	No	No	No	5	Yes	No	Yes	0	0	0	0	0	No	0
Bedford Dwellings	Barnett Way	0018	1	No	No	No	No	20	No	Yes	Yes	0	0	0	2	0	No	0
Beechview	Andick Way	0019	2	No	Yes	No	No	0	Yes	Yes	Yes	0	0	0	0	0	No	0
Beechview	Belesco Avenue	0022	1	Yes	Yes	No	No	0	Yes	No	No	0	0	0	0	0	No	0
Beechview	Canton Avenue	0021	1	No	Yes	No	No	1	Yes	Yes	Yes	0	0	0	0	1	No	0
Beechview	Dawn Avenue	0024	1.5	No	Yes	No	No	0	Yes	Yes	No	0	0	0	0	0	No	0
Beechview	Napoleon Avenue	0020	2	No	Yes	No	No	0	Yes	Yes	Yes	0	0	0	0	0	No	0
Beechview	Platt Avenue	0023	1	Yes	Yes	No	No	4	Yes	No	Yes	0	0	0	0	0	Yes	0
Beltzhoover	Anesbury at Banning Way	0041	1	Yes	Yes	No	No	10	No	Yes	Yes	0	0	0	0	0	No	0

Attachment 6

City of Pittsburgh Illegal Dump Survey Waste Characteristics by Neighborhood*

Neighborhood	Site Name	Site Number	Calculated Tons	Bagged Trash	Household Trash	Recyclables	HHW	Tires	Clean Fill	C_D Waste	Yard Waste	White Goods	Electronics	Televisions	Furniture	Mattresses	Vehicle Parts	Car Batteries
Beltzhoover	Banning Way	0028	0.125	Yes	Yes	No	No	0	No	No	No	0	0	0	0	0	No	0
Beltzhoover	Bernd Way	0038	0.25	Yes	Yes	No	No	10	No	Yes	Yes	0	0	0	0	0	No	0
Beltzhoover	Blanco Way	0035	0.125	Yes	Yes	No	No	10	No	No	Yes	0	0	0	0	0	No	0
Beltzhoover	Boggston Avenue	0034	2.5	Yes	Yes	No	No	10	Yes	Yes	Yes	0	0	0	0	0	No	0
Beltzhoover	Brice Way	0030	5	Yes	Yes	No	No	5	Yes	Yes	Yes	0	0	0	0	0	No	0
Beltzhoover	Climax at Montooth	0033	2	Yes	Yes	No	No	10	Yes	Yes	Yes	0	0	0	0	0	Yes	0
Beltzhoover	Industry Street	0029	0.125	Yes	Yes	No	No	5	No	No	No	0	0	0	0	0	No	0
Beltzhoover	Lehr Way	0037	5	Yes	Yes	No	No	0	No	Yes	Yes	0	0	0	0	0	No	0
Beltzhoover	Letzkus Way	0026	0.25	Yes	Yes	No	No	0	No	No	No	0	0	0	0	1	No	0
Beltzhoover	Loyal Way Site 1	0027	1.5	Yes	Yes	No	No	20	No	Yes	Yes	0	0	0	0	0	No	0
Beltzhoover	Loyal Way Site 2	0039	4	Yes	Yes	No	No	10	No	Yes	Yes	0	0	0	0	0	No	0
Beltzhoover	Orient Way	0040	4	Yes	Yes	No	No	10	Yes	Yes	Yes	0	0	0	1	1	No	0
Beltzhoover	Proxim Way at Delmont	0032	10	Yes	Yes	No	No	50	Yes	Yes	Yes	0	0	0	0	0	No	0
Beltzhoover	Taft and Montooth	0025	2.5	Yes	Yes	No	No	15	Yes	Yes	Yes	0	0	0	0	0	Yes	0
Beltzhoover	Taft at Schuck Way	0031	1	Yes	Yes	No	No	10	Yes	Yes	Yes	0	1	0	0	0	No	0
Bloomfield	Aloe at South Mathilda	0043	1	No	Yes	Yes	No	0	No	Yes	No	0	0	0	0	0	No	0
Bloomfield	Juniper	0044	1	Yes	Yes	Yes	No	0	No	Yes	No	0	0	0	3	0	No	0
Bloomfield	Juniper at Edmond	0042	1	No	Yes	Yes	No	1	No	No	No	0	0	0	1	0	No	0
Bluff	Watson Street	0045	1	No	Yes	Yes	No	1	No	No	Yes	0	0	0	0	0	No	0
Brookline	Dunster Street	0050	0.5	No	Yes	No	No	5	No	No	Yes	0	0	0	0	0	No	0
Brookline	Edgebrook Avenue	0048	25	Yes	Yes	No	No	300	Yes	Yes	Yes	0	0	0	0	0	Yes	0
Brookline	Heber Way	0046	0.5	No	Yes	No	No	5	No	No	No	0	0	0	1	0	No	0
Brookline	Lapeer Way	0051	0.25	No	No	No	No	0	Yes	No	No	0	0	0	0	0	No	0

Attachment 6

City of Pittsburgh Illegal Dump Survey Waste Characteristics by Neighborhood*

Neighborhood	Site Name	Site Number	Calculated Tons	Bagged Trash	Household Trash	Recyclables	HHW	Tires	Clean Fill	C_D Waste	Yard Waste	White Goods	Electronics	Televisions	Furniture	Mattresses	Vehicle Parts	Car Batteries
Brookline	Starkamp Street	0049	0.25	No	Yes	No	No	0	No	No	Yes	0	0	0	0	0	No	0
Brookline	Zimmerman Street	0047	5	Yes	Yes	Yes	No	10	Yes	Yes	Yes	0	0	0	0	0	No	0
California-Kirkbride	Morrison Street	0052	0.75	No	No	No	No	35	No	No	No	0	0	0	0	0	No	0
Carrick	Alplaus Street	0055	10	No	Yes	No	No	25	Yes	Yes	Yes	0	0	0	0	0	No	0
Carrick	Alries Street	0058	10	No	Yes	No	No	20	Yes	Yes	Yes	5	0	1	2	0	Yes	0
Carrick	Athena Way	0068	2	Yes	Yes	No	No	20	No	Yes	Yes	0	0	0	0	0	No	0
Carrick	Becks Run Road Site 1	0070	5	No	Yes	No	No	10	Yes	Yes	Yes	0	0	0	0	0	No	0
Carrick	Becks Run Road Site 2	0071	0.25	No	Yes	No	No	0	No	Yes	Yes	0	0	0	1	0	No	0
Carrick	Brimingham Avenue	0061	0.5	No	Yes	No	No	2	Yes	Yes	Yes	0	0	0	1	0	No	0
Carrick	Brook Street	0066	5	Yes	Yes	No	No	10	Yes	Yes	Yes	0	0	0	0	0	No	0
Carrick	Cloverdale Street	0069	0.125	No	Yes	No	No	4	Yes	No	No	0	0	0	0	0	No	0
Carrick	Downing Street	0072	5	No	Yes	No	No	10	Yes	Yes	Yes	0	0	0	0	0	No	0
Carrick	East Cherry Hill Street	0057	0.125	No	Yes	No	No	5	Yes	Yes	Yes	0	0	0	0	0	No	0
Carrick	East Meyers Street	0059	0.125	No	Yes	No	No	2	No	Yes	Yes	0	0	0	0	0	Yes	0
Carrick	Laughlin Avenue Site 1	0062	2.5	No	Yes	No	No	0	Yes	Yes	Yes	0	0	0	1	0	No	0
Carrick	Laughlin Avenue Site 2	0063	0.125	No	Yes	No	No	3	Yes	Yes	No	0	0	0	0	0	No	0
Carrick	Minooka Street	0065	5	Yes	Yes	No	No	5	Yes	Yes	Yes	0	0	0	0	0	Yes	0
Carrick	Pandora Way	0056	0.25	Yes	Yes	No	No	2	No	Yes	Yes	0	0	0	0	0	No	0
Carrick	Plummet Way	0053	0.25	No	Yes	No	No	10	No	No	No	0	0	0	0	0	No	0
Carrick	Poplar Grove	0054	5	No	Yes	No	No	20	Yes	Yes	Yes	0	0	0	0	0	No	0
Carrick	Romance Way	0060	10	No	Yes	No	No	10	Yes	Yes	Yes	0	0	0	1	0	No	0
Carrick	Saw Mill Run	0067	50	No	Yes	No	No	0	Yes	Yes	No	0	0	0	5	0	No	0
Central Oakland	Bolair Way at Parkview	0243	0.5	Yes	Yes	Yes	No	0	No	No	No	0	0	0	0	0	No	0

Attachment 6

City of Pittsburgh Illegal Dump Survey Waste Characteristics by Neighborhood*

Neighborhood	Site Name	Site Number	Calculated Tons	Bagged Trash	Household Trash	Recyclables	HHW	Tires	Clean Fill	C_D Waste	Yard Waste	White Goods	Electronics	Televisions	Furniture	Mattresses	Vehicle Parts	Car Batteries
Central Oakland	Dawson and Diulus Way	0074	0.5	Yes	Yes	Yes	No	0	No	No	Yes	0	0	0	0	0	No	0
Central Oakland	Oakland Square	0244	0.5	Yes	Yes	Yes	No	0	No	No	No	0	0	0	0	0	No	0
Crawford Roberts-Hill	Arcena Street	0076	2	Yes	Yes	Yes	No	2	No	Yes	Yes	0	0	0	1	1	No	0
Crawford Roberts-Hill	Diaz Way	0075	0.75	No	Yes	Yes	No	5	No	No	No	0	0	0	2	0	No	0
Duquesne Heights	Bradley Street	0078	1.5	No	Yes	No	No	5	Yes	No	Yes	0	0	0	0	0	No	0
Duquesne Heights	Greenleaf Street	0077	4	Yes	Yes	No	No	10	Yes	Yes	Yes	0	0	1	0	0	No	0
Duquesne Heights	Lizardi Way	0079	2	Yes	Yes	No	No	10	Yes	Yes	Yes	0	0	0	0	0	No	0
Duquesne Heights	Sweetbriar Street	0080	2.5	Yes	Yes	No	No	10	Yes	Yes	Yes	0	0	0	0	0	No	0
Duquesne Heights	Wyola Street	0195	6	Yes	Yes	No	No	0	No	Yes	Yes	0	0	0	1	0	No	0
East Hills	Dornbush Street	0087	0.25	No	No	Yes	No	15	No	Yes	No	0	0	0	1	0	No	0
East Hills	East Hills Drive	0095	0.5	Yes	Yes	Yes	No	2	No	No	No	0	0	0	1	0	No	0
East Hills	Fahnestock Avenue	0090	0.5	Yes	Yes	Yes	No	15	Yes	No	Yes	0	0	0	1	0	No	0
East Hills	Fargo Way	0093	3	Yes	Yes	No	No	0	Yes	Yes	Yes	0	0	0	0	0	No	0
East Hills	Frankstown Avenue	0283	4	Yes	Yes	Yes	Yes	30	No	Yes	No	0	0	0	2	0	Yes	0
East Hills	Hackett Way	0091	1.5	Yes	Yes	Yes	No	0	No	Yes	Yes	0	0	0	3	2	No	0
East Hills	Haverhill Street	0094	2	Yes	Yes	Yes	No	2	Yes	Yes	Yes	1	0	0	0	1	No	0
East Hills	Karl Street	0081	0.5	Yes	Yes	No	No	2	No	Yes	Yes	0	0	0	0	0	No	0
East Hills	Rolfe Street	0084	0.5	No	No	Yes	No	2	No	Yes	Yes	0	0	0	0	0	No	0
East Hills	Seagirt Street	0089	1	Yes	Yes	Yes	No	5	No	Yes	Yes	0	0	0	0	0	No	0
East Hills	Sickles Street	0092	0.5	Yes	No	Yes	No	5	Yes	Yes	Yes	0	0	0	0	0	No	0
East Hills	Tokay Street	0088	0.5	No	No	No	No	0	No	Yes	No	0	0	0	0	0	No	0
East Hills	Wilkinsburg Avenue Site 1	0083	1	Yes	Yes	Yes	No	0	Yes	Yes	Yes	0	0	0	0	0	Yes	0
East Hills	Wilkinsburg Avenue Site 2	0085	0.5	No	No	No	No	0	Yes	Yes	Yes	0	0	0	0	0	No	0

Attachment 6

City of Pittsburgh Illegal Dump Survey Waste Characteristics by Neighborhood*

Neighborhood	Site Name	Site Number	Calculated Tons	Bagged Trash	Household Trash	Recyclables	HHW	Tires	Clean Fill	C_D Waste	Yard Waste	White Goods	Electronics	Televisions	Furniture	Mattresses	Vehicle Parts	Car Batteries
East Hills	Wilkinsburg Avenue Site 3	0086	1.5	Yes	Yes	Yes	No	30	No	No	No	0	0	0	1	0	No	0
Esplen	Earl Street	0102	1.5	Yes	Yes	Yes	Yes	8	No	No	Yes	0	0	0	1	0	No	0
Esplen	Espen Way Site 1	0099	2.5	Yes	Yes	Yes	No	0	No	Yes	Yes	0	0	0	0	0	No	0
Esplen	Espen Way Site 2	0101	0.5	Yes	Yes	No	No	5	No	No	Yes	0	0	0	0	0	No	0
Esplen	Radcliffe Street	0097	1.5	Yes	Yes	Yes	No	0	No	Yes	No	0	0	0	0	2	No	0
Esplen	Saginaw Street	0100	1	Yes	Yes	Yes	Yes	6	No	Yes	No	0	0	0	0	0	No	0
Esplen	Sloan Way Site 1	0098	6	Yes	Yes	Yes	No	25	No	Yes	Yes	0	0	0	0	0	Yes	0
Esplen	Sloan Way Site 2	0096	2	Yes	Yes	Yes	No	8	No	Yes	No	1	0	0	1	0	No	0
Garfield	Alhambra Way	0109	1	Yes	No	Yes	No	1	No	Yes	Yes	0	0	0	0	0	No	0
Garfield	Ardary Street	0108	0.5	Yes	No	No	No	15	No	Yes	No	0	0	0	0	0	No	0
Garfield	Broad Street	0104	0.5	Yes	Yes	Yes	No	0	No	Yes	No	0	0	0	2	0	No	0
Garfield	Brown Way	0105	1	Yes	Yes	Yes	No	0	Yes	Yes	Yes	0	0	0	0	0	No	0
Garfield	Cornwall Street	0112	1.5	Yes	Yes	Yes	No	5	No	No	Yes	0	0	0	0	0	No	0
Garfield	Hillcrest Street Site 1	0107	0.75	Yes	Yes	Yes	No	0	Yes	Yes	Yes	0	0	0	0	0	No	0
Garfield	Hillcrest Street Site 2	0115	0.5	Yes	No	Yes	No	5	No	Yes	Yes	0	0	0	1	0	No	0
Garfield	Jordan Way	0110	2.5	Yes	Yes	Yes	Yes	4	No	Yes	Yes	0	0	0	1	0	No	0
Garfield	Kincaid Street	0111	1.5	No	No	Yes	No	0	Yes	Yes	Yes	0	0	0	0	0	No	0
Garfield	Mora Way Site 1	0113	1.5	Yes	Yes	Yes	No	3	No	Yes	Yes	0	0	0	1	0	Yes	0
Garfield	Mora Way Site 2	0114	0.75	No	No	Yes	No	10	Yes	No	Yes	0	0	0	0	0	No	0
Garfield	North Negley Avenue	0103	1	Yes	Yes	No	No	0	No	Yes	No	0	0	0	0	0	No	0
Garfield	Shamrock Way Site 1	0106	1	Yes	Yes	Yes	No	1	No	Yes	No	0	2	0	0	2	No	0
Garfield	Shamrock Way Site 2	0116	3	Yes	Yes	Yes	Yes	10	Yes	Yes	Yes	0	0	1	4	2	No	0
Greenfield	Bigelow Overlook	0119	2.5	No	Yes	No	No	0	No	Yes	No	0	0	0	0	0	No	0

Attachment 6

City of Pittsburgh Illegal Dump Survey Waste Characteristics by Neighborhood*

Neighborhood	Site Name	Site Number	Calculated Tons	Bagged Trash	Household Trash	Recyclables	HHW	Tires	Clean Fill	C_D Waste	Yard Waste	White Goods	Electronics	Televisions	Furniture	Mattresses	Vehicle Parts	Car Batteries
Greenfield	Boundary Street	0125	1	No	No	Yes	No	0	Yes	Yes	No	0	0	0	0	0	No	0
Greenfield	Braywood Way	0136	1.25	No	Yes	Yes	No	1	No	Yes	No	0	0	0	0	0	No	0
Greenfield	Flemington Street	0135	1.5	No	Yes	Yes	No	0	No	Yes	No	0	0	0	1	0	No	0
Greenfield	Forrester Way	0120	3	No	No	No	No	1	Yes	Yes	Yes	0	0	0	0	0	No	0
Greenfield	Greenfield & Lydia	0118	0.5	No	No	No	No	0	No	No	No	0	0	0	0	0	No	0
Greenfield	Haworth Road	0123	7.5	Yes	Yes	No	No	20	No	Yes	No	0	0	0	3	0	No	0
Greenfield	Ibex Way	0132	1	Yes	No	No	No	0	No	No	No	3	0	0	0	0	No	0
Greenfield	Ivondale Street	0129	2.5	No	Yes	Yes	No	4	No	Yes	Yes	0	0	0	0	0	No	0
Greenfield	Monteiro Street	0134	7.5	Yes	Yes	Yes	No	5	Yes	Yes	Yes	0	3	0	1	0	No	0
Greenfield	Moose Way	0131	1	Yes	No	No	No	1	No	Yes	No	0	0	0	0	0	No	0
Greenfield	Panther Hollow Soccer Field	0124	1	No	Yes	Yes	No	3	No	Yes	No	0	0	0	0	0	Yes	0
Greenfield	Saline Lot	0130	1	No	Yes	Yes	No	0	No	Yes	No	0	0	0	0	0	No	0
Greenfield	Saline Street Site 1	0126	0.5	No	Yes	No	No	0	No	No	Yes	0	1	1	0	0	No	0
Greenfield	Saline Street Site 2	0127	0.5	Yes	Yes	Yes	No	3	No	Yes	No	0	0	1	0	0	No	0
Greenfield	Waldeck Street	0121	3	Yes	Yes	Yes	No	4	No	Yes	No	0	0	0	0	0	No	0
Greenfield	Wasser Way	0133	1	Yes	No	No	No	0	Yes	Yes	No	0	0	0	0	0	No	0
Greenfield	Whitaker Street	0128	2	Yes	Yes	Yes	No	1	No	No	No	0	0	0	0	0	Yes	0
Greenfield	Winterburn Cliff	0117	1.5	No	No	No	No	1	No	No	Yes	0	2	0	0	0	No	0
Greenfield	Yoder-Tunstall	0122	1	Yes	Yes	No	No	1	No	Yes	No	0	0	0	1	1	No	0
Hazelwood	Chatsworth Street	0140	2.5	No	No	No	No	15	No	No	No	0	0	0	0	0	No	0
Hazelwood	Clarion Street	0146	0.5	Yes	No	No	No	0	No	No	No	0	0	0	0	0	No	0
Hazelwood	East Elizabeth Street	0143	1.25	Yes	Yes	Yes	No	2	No	No	No	1	0	0	1	0	No	0
Hazelwood	Frayne Street	0147	1	No	Yes	No	No	0	No	No	No	0	0	0	0	0	No	0

Attachment 6

City of Pittsburgh Illegal Dump Survey Waste Characteristics by Neighborhood*

Neighborhood	Site Name	Site Number	Calculated Tons	Bagged Trash	Household Trash	Recyclables	HHW	Tires	Clean Fill	C_D Waste	Yard Waste	White Goods	Electronics	Televisions	Furniture	Mattresses	Vehicle Parts	Car Batteries
Hazelwood	Home Rule Street	0138	2.5	Yes	Yes	Yes	No	0	Yes	Yes	Yes	0	0	0	0	1	No	0
Hazelwood	Kinglake Street	0145	1.75	Yes	No	No	No	0	No	Yes	No	0	0	0	0	0	No	0
Hazelwood	Monongahela Street	0139	1	Yes	No	No	No	2	No	Yes	No	0	0	0	0	0	No	0
Hazelwood	Nansen Street	0137	0.5	Yes	No	No	No	4	No	Yes	No	0	0	0	2	0	No	0
Hazelwood	Odin Street	0144	12.5	Yes	Yes	Yes	No	2	No	Yes	No	4	0	0	3	1	No	0
Hazelwood	Sylvan Avenue Site 1	0141	25	Yes	Yes	Yes	No	50	No	Yes	No	4	0	0	5	5	Yes	0
Hazelwood	Sylvan Avenue Site 2	0142	1.5	Yes	Yes	Yes	No	1	No	No	No	0	0	0	0	0	No	0
Homewood North	Forest Way Site 1	0148	1	Yes	Yes	No	No	1	No	Yes	No	0	0	0	2	0	No	0
Homewood North	Forest Way Site 2	0149	1	Yes	Yes	No	No	0	No	No	No	0	0	0	0	0	No	0
Homewood North	North Wheeler Street	0282	1.5	Yes	Yes	Yes	No	0	No	Yes	No	0	0	0	1	1	No	0
Homewood North	North Wheeler Street and Ferndale Street	0281	2	Yes	No	Yes	Yes	0	No	Yes	Yes	1	0	0	0	0	Yes	0
Homewood South	Frankstown Ave. and Tyson Street	0151	1	No	Yes	Yes	No	0	No	Yes	Yes	0	0	0	0	0	No	0
Homewood South	North Lang Avenue	0152	1.5	Yes	Yes	Yes	No	4	No	No	No	0	0	0	4	0	No	0
Homewood South	Oakwood Street	0150	1	No	Yes	Yes	No	1	No	No	Yes	0	0	0	1	0	No	0
Homewood West	McCombs Street	0153	0.5	Yes	Yes	Yes	No	1	No	Yes	No	1	1	0	0	0	No	0
Knoxville	Cedarhurst Street	0161	0.5	Yes	Yes	No	No	5	No	Yes	Yes	0	0	0	0	0	No	0
Knoxville	Elsinsburg Way	0155	0.5	Yes	Yes	No	No	5	No	Yes	Yes	0	0	0	0	1	No	0
Knoxville	Lorna Way	0154	2	Yes	Yes	No	No	10	Yes	Yes	Yes	0	0	0	0	0	No	0
Knoxville	Michigan Way	0162	1	No	Yes	Yes	No	5	No	No	Yes	0	0	0	0	0	No	0
Knoxville	Parklow Street	0156	0.5	No	Yes	No	No	4	No	No	Yes	0	0	0	0	0	No	0
Knoxville	Rentz Way	0159	1.5	Yes	Yes	No	No	5	No	Yes	Yes	0	0	0	0	0	No	0
Knoxville	Roll Way	0157	1.5	Yes	Yes	No	No	5	Yes	Yes	No	0	0	1	0	0	Yes	0
Knoxville	Sylvania Way	0160	0.5	Yes	Yes	No	No	10	No	Yes	Yes	0	0	0	0	0	No	0

Attachment 6

City of Pittsburgh Illegal Dump Survey Waste Characteristics by Neighborhood*

Neighborhood	Site Name	Site Number	Calculated Tons	Bagged Trash	Household Trash	Recyclables	HHW	Tires	Clean Fill	C_D Waste	Yard Waste	White Goods	Electronics	Televisions	Furniture	Mattresses	Vehicle Parts	Car Batteries
Larimer	Braden and Dodge	0164	0.5	Yes	Yes	Yes	Yes	4	No	Yes	No	0	0	0	0	0	No	0
Larimer	Hooker Street at Thompson	0166	0.5	Yes	Yes	No	No	2	No	No	No	0	0	0	0	0	No	0
Larimer	Lenora Way	0163	1	No	Yes	Yes	Yes	3	No	Yes	No	0	0	0	0	0	No	0
Larimer	Paulson Avenue	0165	1.5	No	Yes	No	No	5	No	Yes	No	0	0	0	3	0	No	0
Larimer	Renfrew Street	0167	0.5	Yes	Yes	No	No	9	No	No	Yes	0	0	0	0	0	No	0
Larimer	Tripod Way	0172	0.5	No	Yes	No	No	0	No	Yes	No	0	0	0	0	0	No	0
Larimer	Victor Way	0170	1	Yes	Yes	Yes	No	15	No	Yes	Yes	0	1	1	5	0	No	0
Larimer	Wiltsie Street	0169	1.25	Yes	No	Yes	No	20	No	No	Yes	0	0	0	0	0	Yes	0
Larimer	Winslow at Larimer	0168	1	No	Yes	No	No	0	No	No	Yes	0	0	0	8	0	No	0
Larimer	Xenia Way	0171	1	Yes	Yes	No	No	20	No	Yes	Yes	0	0	0	4	0	No	0
Lincoln-Lemington-Belmar	Arbor Street	0174	0.5	Yes	Yes	Yes	No	3	No	Yes	No	0	0	0	2	1	No	0
Lincoln-Lemington-Belmar	Brushton Avenue	0175	2	Yes	Yes	Yes	No	10	No	Yes	Yes	0	0	0	0	0	No	0
Lincoln-Lemington-Belmar	Dravo Way	0173	5	Yes	Yes	Yes	No	6	No	Yes	No	0	1	0	4	0	No	0
Lincoln-Lemington-Belmar	East Chester	0182	0.5	No	No	No	No	0	No	Yes	Yes	0	0	0	0	0	No	0
Lincoln-Lemington-Belmar	Ebel Street	0183	1.5	No	Yes	Yes	No	20	No	Yes	No	0	0	0	0	0	Yes	0
Lincoln-Lemington-Belmar	Gladefield Street	0176	2	No	Yes	Yes	No	8	No	Yes	No	0	0	0	3	0	Yes	0
Lincoln-Lemington-Belmar	Gopher Street	0186	1	Yes	No	Yes	No	0	No	Yes	Yes	2	2	1	2	0	No	0
Lincoln-Lemington-Belmar	Highland Avenue Site 1	0184	0.5	Yes	Yes	No	No	3	No	No	No	0	0	0	0	0	No	0
Lincoln-Lemington-Belmar	Highland Avenue Site 2	0181	0.5	No	No	No	No	5	No	Yes	No	0	0	0	0	0	No	0
Lincoln-Lemington-Belmar	Laxton Street	0177	1	Yes	Yes	Yes	No	5	No	No	No	0	0	0	4	0	No	0
Lincoln-Lemington-Belmar	Owassa Way	0185	2	Yes	Yes	No	No	50	No	Yes	Yes	0	0	0	0	0	No	0
Lincoln-Lemington-Belmar	Rowan at Paulson	0178	1.5	No	Yes	No	No	0	No	Yes	Yes	0	2	2	4	0	No	0
Lincoln-Lemington-Belmar	Verona Boulevard	0179	0.5	Yes	No	No	No	0	No	Yes	Yes	0	0	0	0	0	No	0

Attachment 6

City of Pittsburgh Illegal Dump Survey Waste Characteristics by Neighborhood*

Neighborhood	Site Name	Site Number	Calculated Tons	Bagged Trash	Household Trash	Recyclables	HHW	Tires	Clean Fill	C_D Waste	Yard Waste	White Goods	Electronics	Televisions	Furniture	Mattresses	Vehicle Parts	Car Batteries
Lincoln-Lemington-Belmar	Westmoreland Ave / Toga Way	0180	0.5	Yes	Yes	Yes	No	4	No	Yes	Yes	0	0	0	0	0	No	0
Middle Hill	Elba Street	0192	1	Yes	Yes	Yes	No	0	No	Yes	No	0	0	0	3	0	No	0
Middle Hill	Mahon Street	0188	0.5	Yes	Yes	Yes	No	5	No	No	No	0	0	0	0	0	No	0
Middle Hill	Bedford Avenue	0187	1.5	Yes	Yes	Yes	No	11	No	No	No	0	0	0	2	2	No	0
Middle Hill	Duff Street	0189	1	Yes	No	No	No	11	No	Yes	No	0	0	0	0	0	No	0
Middle Hill	McClaren Street	0191	2	No	No	Yes	No	5	No	Yes	No	0	0	0	0	0	Yes	0
Middle Hill	Webster Avenue	0190	3	Yes	Yes	Yes	No	0	No	Yes	Yes	0	0	0	2	0	No	0
Mount Oliver	Rectenwald Street	0194	10	No	No	No	No	0	No	Yes	No	0	0	0	0	0	No	0
Mount Oliver	St. Joseph Street	0193	1	Yes	Yes	Yes	No	1	No	No	No	0	0	0	0	0	No	0
Mount Washington	Bailey Avenue	0199	1	No	No	No	No	0	No	No	Yes	0	0	0	0	0	No	0
Mount Washington	Ennis Street	0196	0.125	No	No	No	No	1	No	No	No	0	0	0	0	0	No	0
Mount Washington	Penelope and Ottawa Street	0197	1	Yes	Yes	No	No	5	Yes	Yes	No	0	0	0	1	0	No	0
Mount Washington	Penelope Street	0198	2.5	Yes	Yes	No	No	10	Yes	Yes	Yes	0	0	0	0	0	No	0
Mount Washington	William Street	0200	3	Yes	No	Yes	No	25	Yes	Yes	Yes	0	0	0	0	0	No	0
New Homestead	Armorhill Avenue	0202	3	Yes	Yes	Yes	Yes	30	No	Yes	Yes	0	0	0	0	0	Yes	0
New Homestead	Basic Avenue	0208	1	No	No	Yes	No	25	No	No	Yes	0	0	0	0	0	Yes	0
New Homestead	Doerville Avenue	0204	1	No	No	Yes	Yes	2	Yes	Yes	Yes	0	0	0	0	0	No	0
New Homestead	Ingot Avenue	0207	1	Yes	Yes	Yes	Yes	30	Yes	No	No	0	0	0	0	0	Yes	0
New Homestead	Moorey Road	0206	0.5	No	No	Yes	Yes	15	No	No	No	0	1	0	0	0	No	0
New Homestead	Overboro Street	0201	7.5	No	No	Yes	No	25	Yes	No	Yes	0	0	2	0	0	Yes	0
New Homestead	Panarama Baseball Field	0203	3.5	Yes	No	Yes	Yes	8	Yes	Yes	Yes	0	0	0	0	0	No	0
New Homestead	West Circle Avenue	0205	2	No	No	Yes	Yes	0	Yes	Yes	Yes	0	0	0	0	0	No	0
Overbrook	Glenbury Street Site 1	0210	0.5	No	Yes	No	No	5	Yes	Yes	Yes	0	0	0	0	0	No	0

Attachment 6

City of Pittsburgh Illegal Dump Survey Waste Characteristics by Neighborhood*

Neighborhood	Site Name	Site Number	Calculated Tons	Bagged Trash	Household Trash	Recyclables	HHW	Tires	Clean Fill	C_D Waste	Yard Waste	White Goods	Electronics	Televisions	Furniture	Mattresses	Vehicle Parts	Car Batteries
Overbrook	Glenbury Street Site 2	0211	0.5	No	Yes	No	No	0	Yes	Yes	Yes	0	0	0	0	0	No	0
Overbrook	Horning Street	0213	0.125	No	Yes	No	No	10	No	No	Yes	0	0	0	0	0	No	0
Overbrook	Jacob Street	0209	1.5	Yes	Yes	No	No	50	Yes	Yes	Yes	1	0	0	0	0	No	0
Overbrook	Mullooly Street	0212	0.5	No	Yes	No	No	5	No	No	No	0	0	0	0	0	No	0
Perry North	Dalton Avenue	0214	0.75	No	Yes	Yes	Yes	4	Yes	Yes	No	1	0	0	2	0	No	0
Perry North	Menlo Street	0215	3.5	Yes	Yes	Yes	No	40	Yes	Yes	Yes	0	0	1	2	1	No	0
Perry North	Watson Boulevard	0216	3	No	Yes	Yes	Yes	30	Yes	Yes	Yes	0	0	0	2	0	Yes	0
Perry South	Brule Street	0221	7.5	Yes	Yes	Yes	No	25	Yes	Yes	Yes	0	0	1	3	2	Yes	0
Perry South	Irwin Avenue	0220	0.5	Yes	Yes	Yes	Yes	1	Yes	Yes	No	0	0	0	1	3	No	0
Perry South	Kenwood Avenue/ Canter Way	0223	0.25	Yes	Yes	Yes	No	20	No	Yes	Yes	0	0	0	1	0	No	0
Perry South	Lyzell Street	0222	6	Yes	Yes	Yes	Yes	30	Yes	Yes	Yes	0	2	2	0	0	No	0
Perry South	Metcalf Street	0218	2	Yes	Yes	Yes	No	45	No	Yes	Yes	0	0	0	0	0	No	0
Perry South	Russell Street	0217	1.5	No	No	Yes	No	5	Yes	Yes	Yes	0	0	0	0	0	No	0
Perry South	Snyder Street	0219	2	Yes	Yes	Yes	Yes	2	No	Yes	Yes	0	1	1	1	0	No	0
Polish Hill	Kenney Way	0224	5	Yes	Yes	Yes	No	0	No	Yes	No	0	0	0	0	0	No	0
Saint Clair	Fisher Street	0225	3	Yes	No	Yes	No	6	Yes	Yes	No	1	0	0	0	0	No	0
Saint Clair	Henger Street	0227	1	Yes	No	Yes	No	5	Yes	Yes	No	0	0	0	0	0	No	0
Saint Clair	Schuler Street	0226	1	Yes	No	No	No	0	No	Yes	No	0	0	0	0	0	No	0
Sheraden	Adon Street	0229	1	Yes	Yes	Yes	No	6	No	No	Yes	0	1	1	0	0	No	0
Sheraden	Brevet Way	0239	0.5	Yes	Yes	Yes	No	0	No	No	Yes	0	0	0	0	0	No	0
Sheraden	Brunot Avenue Site 1	0231	1.5	No	Yes	Yes	No	3	No	Yes	No	0	0	0	0	0	No	0
Sheraden	Brunot Avenue Site 2	0234	1.5	Yes	Yes	Yes	No	1	No	No	Yes	0	0	0	0	0	No	0
Sheraden	Glenmawr Avenue Site 1	0232	3	Yes	Yes	Yes	Yes	2	No	No	No	0	0	0	0	1	No	0

Attachment 6

City of Pittsburgh Illegal Dump Survey Waste Characteristics by Neighborhood*

Neighborhood	Site Name	Site Number	Calculated Tons	Bagged Trash	Household Trash	Recyclables	HHW	Tires	Clean Fill	C_D Waste	Yard Waste	White Goods	Electronics	Televisions	Furniture	Mattresses	Vehicle Parts	Car Batteries
Sheraden	Glenmawr Avenue Site 2	0233	1.5	Yes	Yes	No	No	0	No	Yes	Yes	0	0	0	0	0	No	0
Sheraden	Glenmawr Avenue Site 3	0241	0.25	No	Yes	No	No	8	No	Yes	No	0	0	0	0	0	No	0
Sheraden	Hillsboro Avenue	0237	1.5	No	Yes	No	Yes	0	No	Yes	Yes	0	0	0	0	0	No	0
Sheraden	McGonagle Park	0235	1.5	No	Yes	Yes	No	4	No	No	Yes	0	0	0	1	0	No	0
Sheraden	Merwin Avenue	0228	2.5	Yes	Yes	Yes	No	8	No	Yes	No	0	0	1	0	0	No	0
Sheraden	Motor Street	0236	4	Yes	Yes	Yes	Yes	5	No	No	Yes	1	0	0	0	0	Yes	0
Sheraden	Slope Way	0238	7.5	Yes	Yes	Yes	Yes	60	No	Yes	Yes	0	0	0	2	0	No	0
Sheraden	Stadium Street	0240	1.5	No	No	No	No	2	No	Yes	Yes	0	0	0	0	0	No	0
Sheraden	Stafford Street	0230	1	Yes	Yes	Yes	No	0	No	No	Yes	0	0	0	0	0	No	0
South Oakland	Bohem Street	0246	0.5	Yes	Yes	Yes	No	3	No	No	No	0	0	0	0	0	No	0
South Oakland	Frazier Street	0245	0.5	Yes	Yes	Yes	No	0	No	No	Yes	0	0	0	0	0	No	0
South Oakland	Lawn Street	0242	0.5	Yes	Yes	Yes	No	4	No	No	No	0	0	0	0	1	No	0
South Oakland	Romeo Street	0248	0.5	Yes	Yes	Yes	No	0	No	No	Yes	0	0	0	0	0	No	0
South Oakland	Wakefield Street	0247	0.5	Yes	Yes	Yes	No	0	No	No	Yes	0	0	0	0	0	No	0
Southside Slopes	Arlington Avenue Site 1	0249	2.5	Yes	No	No	No	10	No	Yes	No	0	0	1	0	0	No	0
Southside Slopes	Arlington Avenue Site 2	0254	1	No	No	Yes	No	5	No	No	No	0	1	0	3	4	No	0
Southside Slopes	Baldauf Street	0256	0.25	Yes	No	No	No	5	No	No	No	0	0	0	0	0	No	0
Southside Slopes	Josephine Street	0250	5	Yes	No	Yes	No	20	Yes	Yes	No	0	0	2	0	0	No	0
Southside Slopes	McCord Street	0251	0.5	No	No	Yes	No	4	Yes	Yes	No	0	0	0	0	1	No	0
Southside Slopes	Newton Street Site 1	0252	15	No	No	Yes	No	30	Yes	No	Yes	1	0	0	0	1	No	0
Southside Slopes	Newton Street Site 2	0253	0.125	No	No	No	No	2	Yes	No	No	0	0	0	0	0	No	0
Southside Slopes	Oporto Street	0257	0.25	Yes	No	Yes	No	0	No	No	Yes	0	0	0	0	0	No	0
Southside Slopes	St. Patrick Street	0255	0.75	Yes	No	No	No	30	No	No	Yes	0	0	0	0	0	No	0

Attachment 6

City of Pittsburgh Illegal Dump Survey Waste Characteristics by Neighborhood*

Neighborhood	Site Name	Site Number	Calculated Tons	Bagged Trash	Household Trash	Recyclables	HHW	Tires	Clean Fill	C_D Waste	Yard Waste	White Goods	Electronics	Televisions	Furniture	Mattresses	Vehicle Parts	Car Batteries
Spring Garden	Mutzig Street	0258	4	Yes	Yes	Yes	No	25	Yes	Yes	Yes	2	0	0	2	0	Yes	0
Spring Hill	Brahm Street	0260	6	Yes	Yes	Yes	Yes	5	No	Yes	Yes	0	0	0	1	0	No	0
Spring Hill	Essen and Sunset Street	0259	7.5	Yes	Yes	Yes	Yes	75	Yes	Yes	Yes	1	0	0	0	0	No	0
Spring Hill	Gershon Street	0263	22.5	Yes	Yes	Yes	Yes	125	Yes	Yes	Yes	0	0	1	7	2	Yes	0
Spring Hill	Overbeck Street	0261	4	Yes	Yes	Yes	Yes	10	Yes	Yes	Yes	0	0	0	0	0	No	0
Spring Hill	Sunset Avenue	0262	0.25	Yes	Yes	Yes	Yes	4	No	Yes	Yes	0	0	0	0	0	Yes	0
Squirrel Hill South	Beechwood Boulevard Site 1	0281	10	Yes	Yes	Yes	No	6	No	Yes	Yes	0	0	0	0	0	Yes	0
Squirrel Hill South	Beechwood Boulevard Site 2	0282	2	Yes	Yes	Yes	No	4	Yes	Yes	Yes	4	0	0	0	0	No	0
Squirrel Hill South	Landview Road	0264	0.75	No	Yes	Yes	No	0	Yes	No	No	0	0	0	0	0	No	0
Stanton Heights	Mossfield Road	0073	0.5	Yes	No	Yes	No	0	No	No	Yes	0	0	0	0	0	No	0
Swisshelm Park	Oak Grove Avenue	0266	1	No	No	No	No	0	No	Yes	No	0	0	0	0	0	No	0
Swisshelm Park	Ober Street	0265	1.5	No	No	Yes	No	6	Yes	Yes	Yes	0	0	0	0	0	No	0
Terrace Village	Bentley Drive	0273	0.5	Yes	Yes	Yes	No	5	No	No	No	0	0	0	0	0	No	0
Terrace Village	Brackenridge Street	0272	1	Yes	Yes	Yes	No	5	No	Yes	Yes	0	0	0	0	0	No	0
Terrace Village	Burrows at Waring Court	0275	0.5	Yes	Yes	No	No	0	No	Yes	Yes	0	0	0	0	0	No	0
Terrace Village	Burrows Street	0278	0.5	Yes	Yes	Yes	No	3	No	No	No	0	0	0	0	0	No	0
Terrace Village	Kirkpatrick Street	0276	0.5	Yes	Yes	Yes	No	2	No	No	No	0	0	0	1	0	No	0
Terrace Village	Morgan Street	0277	0.5	Yes	Yes	Yes	No	3	No	Yes	Yes	0	0	0	0	0	No	0
Terrace Village	Waring Court	0274	0.5	Yes	Yes	No	No	0	No	Yes	No	1	0	0	2	0	No	0
Upper Hill	Blessing Street	0267	1	Yes	Yes	Yes	No	3	No	Yes	No	1	0	0	1	0	Yes	0
Upper Lawrenceville	56th Street	0268	1.5	Yes	Yes	Yes	No	15	Yes	Yes	Yes	0	0	0	0	0	No	0
West End	Planet Street Site 1	0270	12.5	No	Yes	No	No	0	No	Yes	No	0	0	0	0	0	No	0
West End	Planet Street Site 2	0269	22.5	Yes	Yes	Yes	Yes	45	No	Yes	Yes	0	3	2	10	0	No	4

Attachment 6

City of Pittsburgh Illegal Dump Survey Waste Characteristics by Neighborhood*

Neighborhood	Site Name	Site Number	Calculated Tons	Bagged Trash	Household Trash	Recyclables	HHW	Tires	Clean Fill	C_D Waste	Yard Waste	White Goods	Electronics	Televisions	Furniture	Mattresses	Vehicle Parts	Car Batteries
West Oakland	Orr Street	0271	2.5	Yes	Yes	Yes	No	6	No	Yes	No	0	0	0	0	4	No	0
Windgap	Summerdale Street	0280	2	No	Yes	Yes	No	25	No	Yes	No	0	0	0	0	0	No	0
Windgap	Youghioghenny Street	0279	0.5	Yes	Yes	No	No	2	No	No	No	0	0	0	0	0	No	0

Total Number of Sites: 279

Total Calculated Tons: 676.38

* Characteristics assessed at time of survey were based on what was visible.

Attachment 7

Illegal Dumpsite Survey Summary by Waste Types

Waste Type	# of Sites w/ Waste Type	%	# of Waste Type Found*
Household Trash	204	73%	N/A
Tires	202	72%	2,517
C & D	194	70%	N/A
Bagged Trash	178	64%	N/A
Yard Waste	158	57%	N/A
Recyclables	151	54%	N/A
Clean Fill	94	34%	N/A
Furniture	71	25%	158
HHW	35	13%	N/A
Vehicle Parts	34	12%	N/A
Mattresses	27	10%	46
White Goods	21	8%	38
Televisions	20	7%	25
Electronics	16	6%	25
Car Batteries	1	<1%	4

*Quantities assessed at time of survey were estimates based on what was visible. More items may be buried under trash or leaf litter, or could not be viewed from the public right-of-way.

City of Pittsburgh Illegal Dumpsite Survey Acknowledgements

Produced by PA CleanWays

James Kleissler, Surveyor, PA CleanWays
Hope Feldman, Surveyor, PA CleanWays
Michelle Dunn, Surveyor, PA CleanWays
Todd Crouch, Surveyor, PA CleanWays
Rebecca Bellows, Surveyor, PA CleanWays

Yongfei Zao, University Center for Social and Urban Research, University of Pittsburgh

A special thanks to the rest of the PA CleanWays staff for their various contributions of report design, data management, and editing.

A special acknowledgement to the City of Pittsburgh and their Department of Public Works, Clean Pittsburgh Commission, Allegheny CleanWays, and numerous neighborhood groups.

This report was produced with funding through:

**A grant from the Laurel Foundation
and**

A grant from the Department of Environmental Protection



PA CleanWays

105 West Fourth Street, Greensburg, PA 15601
Phone: 724-836-4121 • Toll Free: 877-772-3673
Fax: 724-836-1980 • www.pacleanways.org