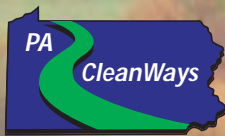
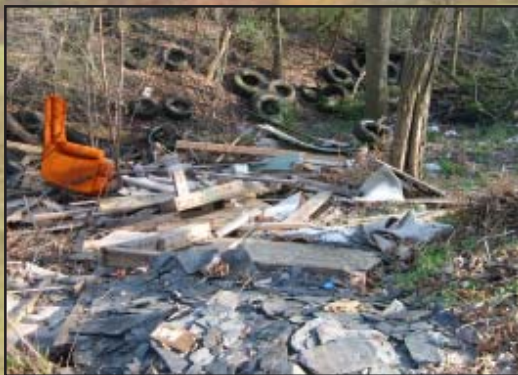


PA CleanWays - Keep Pennsylvania Beautiful Illegal Dump Survey Final Report Blair County 2010



**Empowering people to
eliminate illegal dumping
and littering in Pennsylvania**





**Empowering people to eliminate
illegal dumping and littering
in Pennsylvania**



PA CleanWays and Keep Pennsylvania Beautiful recently joined forces to promote illegal dump cleanups, anti-litter education, special collections, and beautification projects to make their work with local partners and volunteers more effective. Since 1990, PA CleanWays has been dedicated to empowering people to eliminate illegal dumping and littering. Through the coordinated efforts of nearly 52,000 PA CleanWays volunteers, over 11,900 tons of trash have been removed from illegal dumpsites in Pennsylvania and properly disposed. Through cleanups and special collection events sponsored by PA CleanWays chapters and affiliates, over 410,000 tires and 2,250 tons of scrap metal have been properly disposed and recycled. More than 337,000 youths and adults have been reached through educational presentations. Our experience over two decades proves that local involvement, partnerships, and support are vital to lasting success in addressing illegal dumping and littering.

PA CleanWays – Keep Pennsylvania Beautiful

105 West Fourth Street, Greensburg, PA 15601

Phone: 724-836-4121 • Toll Free: 877-772-3673

Fax: 724-836-1980 • www.pacleanways.org

EXECUTIVE SUMMARY

PA CleanWays - Keep Pennsylvania Beautiful is a nonprofit organization that empowers people to eliminate illegal dumping and littering in Pennsylvania through various education and environmental programs. PA CleanWays - Keep Pennsylvania Beautiful illegal dump surveys educate state, county, and local officials about the problem of illegal dumping and provide valuable data about the dumpsites and the community in which they reside to address the problem through cleanups, municipal waste collections, and recycling programs.

Illegal dumpsite identification was completed by driving roads and contacting various constituent groups such as municipal offices and community services, state agencies, and environmental and conservation groups in the area. Limitations of the survey process included poor visibility in high growth areas and surveyors not accessing private lands or high crime/high risk areas. Due to these limitations, it is likely that there were additional dumpsites not accounted for in this report. Farm dumps and private dumps were not included in the survey. The survey process is to document sites where landowners have been the victim of illegal dumping from other parties, not sites where they have been doing the dumping themselves, or past owners did the dumping.

There were 116 dumpsites identified containing an estimated 167.5 tons of trash. Seventy-eight percent of the sites were determined to be active and 82% of the sites were located in a rural area. Of 24 municipalities in Blair County, 24 municipalities have mandatory trash collection. Seven of the municipalities (29%) within Blair County have a curbside recycling program in their community while 9 municipalities (38%) have access to a recycling drop off program. Sixteen municipalities (67%) have illegal dumping activity. Seventy-four sites (64%) were located in municipalities without a curbside recycling program.

Thirty-eight, or 33%, of the surveyed sites were in the vicinity (50 feet and within) of some sort of waterway or body of water. Of those, 25 sites had waste materials directly in the waterway itself. Of the items inventoried at each dumpsite assessed, 84% of the sites had tires, 77% had recyclables, 63% contained bagged trash, 60% had household trash, and 50% of the sites had some sort of construction and demolition waste. There were a total of 2,195 tires itemized, however those account only for tires visible at time of surveying. Many more tires are assumed to be present under buried trash or leaf litter. Recyclables are defined as steel, bi-metallic, and aluminum cans, glass, plastic bottles and containers, newspaper, magazines, cardboard, etc.

TABLE OF CONTENTS

EXECUTIVE SUMMARY	i
BACKGROUND	1
PURPOSE OF ILLEGAL DUMP SURVEYS	1
IMPACTS OF ILLEGAL DUMPING.....	1
SURVEY METHOD.....	2
DEFINITION OF AN ILLEGAL DUMPSITE.....	2
SITE IDENTIFICATION AND ASSESSMENT.....	3
LIMITATIONS	3
FARM/PRIVATE DUMPING.....	4
BLAIR COUNTY ILLEGAL DUMPSITE SURVEY AREA AND RESULTS	4
SURVEY AREA.....	4
SITE CHARACTERISTICS.....	6
IMPACTS ON WATERWAYS.....	6
WASTE CHARACTERISTICS	6
POSSIBLE CAUSES AND SOLUTIONS	7
POSSIBLE CAUSES.....	7
POSSIBLE SOLUTIONS.....	8
SUMMARY	9
ATTACHMENTS	
#1 Blair County Illegal Dumpsites and Municipalities Map	
#2 Blair County Illegal Dumpsites and Population Density Map	
#3 Blair County Illegal Dumpsites and Environmental Features Map	
#4 Illegal Dumpsite and Trash Collection by Municipality	
#5 Illegal Dumpsite Survey Site Characteristics by Municipality	
#6 Illegal Dumpsite Survey Waste Characteristics by Municipality	
#7 Illegal Dumpsite Survey Summary Chart by County	

BACKGROUND

PA CleanWays - Keep Pennsylvania Beautiful is a nonprofit organization that empowers people to eliminate illegal dumping and littering in Pennsylvania. Since 1990, PA CleanWays - Keep Pennsylvania Beautiful has helped people who are ready to take action against these destructive problems. By partnering with county and local officials, concerned residents, and community organizations, tangible results can be seen within a community through:

- organization of illegal dump and litter cleanups,
- adoption of local areas,
- prevention of future dumping by the watchful eyes of volunteer monitors,
- placement of physical deterrents, and,
- enforcement action when needed.

PA CleanWays - Keep Pennsylvania Beautiful educates the public about proper waste disposal, recycling, and practical alternatives to dumping and littering through the dissemination of literature, presentations, and coordination of collection events for hard-to-dispose of items.

PURPOSE OF ILLEGAL DUMP SURVEYS

The purpose of the illegal dump survey was to assess and document as many illegal dumpsites as possible within the county. Illegal dumping mostly occurs in remote and secluded places, rural areas where few people live and the roads are less traveled. However, for many people who are residents of an urban area, an illegal dump can often be found within a one-mile radius of their home. Illegal dumping, within an urban context, has its own set of unique characteristics. Overall, very few people are aware of the widespread problem of illegal dumping.

The first step in developing an action plan against illegal dumping in a community is to determine the extent of the illegal dumping problem. Once sites are identified, assessed, and mapped, the data gathered can be used to:

- show that a problem does indeed exist,
- prioritize the sites and areas for cleanup and abatement,
- document problem materials within the dumpsites and develop plans for proper disposal, and,
- provide a benchmark to measure cleanup progress.

The survey is also a tool that can be used for planning purposes within the community. It can provide valuable insight into the development and enhancement of solid waste and recycling programs. It can also be used to gain support for funding for public awareness programs and education, as well as to generate funds to clean the existing dumpsites.

IMPACTS OF ILLEGAL DUMPING

Illegal dumping poses a direct threat to the health and safety of humans and animals. Illegal dumping attracts disease-spreading rodents and mosquitoes by giving them a place to live and

breed. West Nile Virus, carried by mosquitoes, has been a primary concern for environmental officials. Illegal dumps also can be a source of physical injury for humans and animals due to broken glass, rusty metals, and toxic substances.

Recently, a new threat has been added to illegal dumping. Methamphetamine labs, used to produce the illegal drug crystal meth, are becoming more and more common. The materials used to make the illegal drug are tossed along the roadsides in illegal dumps and are extremely toxic.

Environmentally, illegal dumping pollutes our soil, surface, and groundwater supplies, as well as the air we breathe if a site catches on fire. The emissions released by the burning plastics and household hazardous waste can be extremely toxic. It is also aesthetically displeasing and ruins the beauty of natural areas, including many public places such as community parks and state forests, parks, and game lands.

Economically, illegal dumps are expensive to clean up. Government agencies spend millions annually on cleanup efforts. The estimated cost to clean up a site can be anywhere from \$600 to over \$1,000 per ton for clean up and removal.¹

Illegal dumpsites can also impact property values, can be a liability for property owners, and affect property purchases and transfers. Tourism revenue can also be affected by illegal dumps, which project to tourists that trash is not a concern of the community or the persons living there.

Illegal dumping also has social impacts on an area. When illegal dumping in neighborhoods and communities becomes status quo, quality of life is impacted and low-level property crime often increases.² This is what is referred to as the “broken window theory” developed originally by James Q. Wilson and George Kelling. The “broken window theory” suggests that neighborhood strategies help to deter and reduce crime by the fast clean up of illegally dumped items, litter, and spilled garbage, and by the prompt removal of disposed of items.³

SURVEY METHOD

Definition of an Illegal Dumpsite

One of the primary goals of an illegal dump survey is to ultimately address the trash in our communities; therefore, the following were considered illegal dumpsites and included in the survey:

- Areas of concentrated trash,
- Areas of scattered trash that:
 - are not considered roadside litter (bottles, fast food wrappers, cans, etc.)

¹PA CleanWays averaged cost from multiple cleanups throughout 2004 & 2005.

² Wilson, James Q., Kelling, George L., “Broken Windows”, *Atlantic Monthly*, March 1982.

³ Henry G. Cisneros, “Defensible Space: Deterring Crime and Building Community”, January 1995.

- appear to have new trash thrown on them occasionally (more than twice a year)
 - appear to have new trash thrown on them occasionally, but cleanup maintenance is prevalent to prevent accumulation,
- Areas containing only piles of yard waste (grass, leaves, branches, trees, etc.). These sites can often attract the dumping of other materials and can grow into major dumpsites, and,
- Areas containing isolated or solitary items, such as 1 or 2 appliances or tires that may or may not be dumped on in the future.

Site Identification and Assessment

PA CleanWays - Keep Pennsylvania Beautiful has learned through its experiences that, to effectively identify illegal dumpsites in an area, it is necessary to physically travel the roadways. By focusing on high probability areas for dump locations such as pull-offs, roads with hillsides, etc., efficient surveying can be done on large areas within a short amount of time.

Preliminary data gathering was conducted by sending a letter to every municipality within the county concerning the survey project. The letters detailed the survey purpose and plan, and asked for known illegal dumpsites to be reported back to PA CleanWays - Keep Pennsylvania Beautiful. Letters were also sent to environmental groups interested in conservation of this area, as well as to state agencies such as the Pennsylvania Department of Environmental Protection, Pennsylvania Department of Conservation and Natural Resources, the Pennsylvania Game Commission, and the Pennsylvania Fish and Boat Commission. Follow up phone calls were made to each municipality prior to beginning assessments in its area.

Once an illegal dumpsite was located, characteristics about the site itself were recorded and documented on standard forms (a copy of the Illegal Dump Survey Assessment Form and Instruction Sheet are available by contacting PA CleanWays - Keep Pennsylvania Beautiful). Pictures were also taken of the illegal dumpsites to further document the problem. GPS coordinates were recorded for each site in order to produce illegal dumpsite maps within the county based on municipalities, population density, and environmental features (see Attachments 1, 2, and 3).

Limitations

The primary limitation with road surveys is that they only permit discovery of sites visible from the public right-of-way, therefore, only those sites were assessed by PA CleanWays - Keep Pennsylvania Beautiful. PA CleanWays - Keep Pennsylvania Beautiful did not enter private property to assess sites. It can be presumed that there are significant numbers of illegal dumpsites out of sight on private property with limited access. Because safety considerations were a priority for this project, areas were not assessed in high crime/risk areas. Most surveying began after the foliage had thinned in the fall and visibility improved, however, some site assessments were limited due to high vegetation and snowfall.

Similar to dense foliage or snow cover, another limitation to the survey is estimating the amount of waste that lies underneath the waterline. As is reported, 38 of the sites are in or

within 50 feet of a waterway with 25 sites directly in the waterway itself. There is no way to estimate the amount of waste that lies underneath the waterline thus these estimates could be low.

Due to cleanup efforts after surveying occurred, some sites in this report may no longer be present.

Farm/Private Dumping

While PA CleanWays - Keep Pennsylvania Beautiful strives to include as many illegal dumpsites in each county as possible, there are two types of dumpsites we do not include in our reports; farm dumps and private dumps. The survey process is to document sites where landowners have been the victim of illegal dumping from other parties, not sites where they have been doing the dumping themselves, or past owners did the dumping.

Farm dumping is still in practice today, although not to the extent it was decades ago. Typically, there was not a disposal plan in place for many areas in the state, therefore farmers disposed of their household garbage, empty chemical containers, yard waste, and other unneeded materials somewhere on their property. A majority of today's farmers have unfortunately inherited farm dumps on their properties, although some continue the practice to save money and time. Increased public awareness of environmental issues caused by any dumpsites has shed light on the reasons not to continue to use farm dumps. Without regulations or enforcement in place to stop it, farm dumping is still an issue in Pennsylvania and many other agricultural states in the U.S. To learn more about how farmers can clean their own dumps and the legalities of farm dumping, contact the Penn State University Agricultural & Biological Engineering Extension at 814-865-7685.⁴

Private dumpsites, ones that are put on the property by the owners, are also not included. These include sites such as stockpiles of scrap, yard waste, household trash, and other things you may find in an illegal dumpsite. Usually these sites are determined private by its proximity to a residence, or marked private with no trespassing signs. There are many times when the surveyor is not able to distinguish between a private site and an illegal dumpsite. In these cases, the site is surveyed and sent to the PA CleanWays - Keep Pennsylvania Beautiful office where, based on the data gathered and photos taken, it is determined whether to include it in the final report as an illegal dumpsite. If a dumpsite in a published report is found to be a farm or private dumpsite, the site is immediately removed from the report.

BLAIR COUNTY ILLEGAL DUMPSITE SURVEY AREA AND RESULTS

Survey Area

Blair County encompasses 525.80 square miles and is located in the central part of Pennsylvania. The county is bordered by Centre County to the north, Huntingdon County to the east, Bedford County to the south, Clearfield County to the northwest, and Cambria County

⁴ Garthe, J. W. & Shufman, J. L. (1997). Farm Dumps: Problems and Solutions. Penn State Agricultural and Biological Engineering. Retrieved from <http://www.abe.psu.edu/extension/factsheets/c/C28.pdf>.

to the west. The county has numerous watersheds within its boundaries, including the Frankstown Branch – Little Juniata Rivers Watershed, Moshannon – Mosquito Creeks Watershed, Clearfield Creek Watershed, Raystown Branch Juniata River Watershed, and the Dunning Creek Watershed.

According to the Census Bureau, the 2000 census recorded the population as 129,144. The median household income is \$32,861. The per capita income is \$16,743. The percentage of individuals below poverty status is 12.6%, while 9.1% of families are below poverty status. The national average is 12.4% for individuals and 9.1% for families. The percent of high school graduates or higher is 83.8%, which is higher than the state average of 81.9%.

John Blair, a farmer, businessman, and state legislator lobbied for the establishment of Blair County, which on February 26, 1846 was formally established and named after him. Hollidaysburg was named the county seat. It was the place for the transfer of goods between the Mainline Canal and the Allegheny Portage Railroad, which connected industry and commerce from Philadelphia to Pittsburgh. However, it was experiencing problems transporting the goods from the canal in Hollidaysburg over the Allegheny Mountains. Inclines were built up the slopes of the mountain to haul the barges up then transferred to a portage railroad. By 1850 the Horseshoe Curve was built, this created the gradual grade for the rail corridor which allowed trains to carry goods and passengers directly over the mountains, rendering the inclines obsolete. Altoona was incorporated into Blair's only city in 1868.

After Johnstown and Pittsburgh developed larger and more efficient means of iron production, the process of using coal for fuel, the availability of ore from the Great Lakes region, and the growth of the railroad to transport all these materials caused the iron industry in Blair County to close. But the Pennsylvania Railroad still supported training and education for the skilled trades which allowed many generations of skilled craftsmen and mechanics to develop a strong manufacturing economic base in the county. The train industry is still thriving in the county. Today, travel and tourism is the second largest industry in Blair County.

Blair County has two State Parks, Canoe Creek State Park that is 658-acres big and Prince Gallitzin State Park that is 6,249 acres large. Because Blair County is so mountainous, cultivation is sparse, only one-fourth of the land is farmed. And even though Blair County ranks forty-third in the state per capita income, it ranks twenty-fourth in income from livestock among Pennsylvania's sixty-seven counties. Today, the city of Altoona is the home of the Railroaders Memorial Museum and the Horseshoe Curve National Historic Landmark. These attractions are a reminder of the tremendous role that transportation has played in the development of industry and agriculture in central Pennsylvania.⁵

In Pennsylvania, municipal solid waste (msw) includes municipal waste, sewage sludge, construction and demolition waste, asbestos, and ash. In Blair County, 24 municipalities offer trash collection and 7 of Blair County's municipalities (29%) have a curbside recycling program within their community. There are 9 municipalities (38%) that have access to drop off locations. Sixteen municipalities (67%) have illegal dumping activity. Seventy-four sites were

⁵ Penn State Cooperative Extension, Blair County.

located in municipalities without a curbside recycling program (see Attachment 4). In 2005, according to the Pennsylvania Department of Environmental Protection, Blair County reported a total of 112,355.28 tons of municipal solid waste generated. Of that total, 30,544.9 tons were recycled giving Blair County a 27% recycling rate. While these numbers are the most recent available for this report, recycling rates fluctuate due to the economy, program availability, and many other factors; thus, this rate may not reflect the current recycling rate in the county. The county has an msw generation rate of 0.87 tons per person per year. The national average is 0.82 tons per person per year.

Site Characteristics

The Blair County survey resulted in the identification of 116 illegal dumpsites totaling an estimated 167.5 tons of trash. The sites ranged in size from approximately .25 tons to 15 tons of waste. A chart of Site Characteristics by Municipality can be found as Attachment 5 of this report.

Of the 116 dump sites, 82% were in rural areas. The terrain of Blair County is somewhat hilly. Hillsides provide illegal dumpers with a convenient place for easy unloading. Seventy-eight percent of the sites were considered to be a continuous problem where dumping occurs routinely. Eleven sites (10%) had “No Dumping” signs present. All of these sites were active sites. Signs, although effective in some areas, often send a message that this is a “safe” place to dump. In some county surveys, the presence of signs resulted in the identification of sites that were not visible from the road. Concerning visibility, 45% of the sites were visible and 25% were partly visible from the road. This fact lends itself to the theory that illegally dumped trash will attract more trash.

Impacts on Waterways

Of all the illegal dumpsites, those posing the most direct and obvious threat to the environment were located in or near waterways. Thirty-eight, or 33%, of the surveyed sites were in the vicinity (50 feet and within) of some sort of waterway or body of water. Of those, 25 sites had waste materials directly in the waterway itself (see Attachment 5). It should, however, be noted that all illegal dumps contaminate our water supply.

Waste Characteristics

Blair County illegal dumpsites contained a variety of waste types. In some areas, the common presence of a waste type may indicate the need for a refuse/recycling program for that particular material. Sixty-four percent of the dumpsites found were located in a municipality without a curbside recycling program. Of the items inventoried at each dumpsite assessed, 84% of the sites had tires, 77% had recyclables, 63% contained bagged trash, 60% had household trash, and 50% of the sites had some sort of construction and demolition waste. There were a total of 2,195 tires itemized, however those account only for tires visible at time of surveying. Many more tires are assumed to be present under buried trash or leaf litter. Recyclables are defined as steel, bi-metallic, and aluminum cans, glass, plastic bottles and containers, newspaper, magazines, cardboard, etc. A chart of the Waste Characteristics by Municipality can be found as Attachment 6, as well as a chart showing Illegal Dumpsite Characteristics Summary by County as Attachment 7 of this report.

POSSIBLE CAUSES AND SOLUTIONS

Illegal dumping occurs in every county of the state. There are a multitude of reasons and excuses why people dump: the cost or inconvenience of proper disposal; the lack of, or frustration in, finding proper disposal options; lack of public education; profit making; the result of other criminal activity or malicious mischief.

Possible Causes

- Municipal curbside trash collection is unavailable
Because it is not mandated by the state, trash collection options are dependent on the city or municipal government. As many rural and small-town municipalities lack funding for mandatory trash collection, it is up to the resident to pay for trash collection. Communities that depend on private subscription for waste collection services have reported greater dumping problems. Inherent inefficiencies and associated higher costs exist in almost all private subscription systems because trucks must travel long distances between customers.⁶
- Recycling programs are unavailable or inconvenient
Act 101 dictates that all communities with populations over 10,000, and densely populated municipalities between 5,000 and 10,000, have recycling programs. Communities that fall outside of these parameters must pay for recycling on their own. Depending on the county, many or all of these communities don't have funding to support a curbside recycling program. Curbside recycling communities have reported a lower incidence of residential waste accumulation problems and a slightly lower incidence of dumping problems.⁷
- Disposal of Construction and Demolition debris (C&D)
C&D debris is a serious solid waste management issue because of the amount that is generated each year, along with the lack of convenient and or affordable disposal options available. C&D debris is often found in illegal dumps and creates a compounded problem because some of the materials may be hazardous, such as wood that has been chemically treated or painted with lead based paint, insulation containing asbestos, or shingles.
- Shortage of enforcement
Unfortunately, many communities cannot devote people and resources to effectively deal with illegal dumping. As a result, dumpers do not fear prosecution and have no reason to stop their habits.
- Education
Illegal dumping has been a learned habit for many. Prior to anti – dumping laws, it was common practice to use open town dumps, burn or bury trash, or

⁶ PA CleanWays and PROP, "Factors Influencing Illegal Dumping in Pennsylvania Communities", Spring 2001.

⁷ PA CleanWays and PROP, "Factors Influencing Illegal Dumping in Pennsylvania Communities", Spring 2001.

dump in a convenient out of the way area. Today we know the harmful effects from illegal dumping. Education is key to diminish the habits learned and teach the public proper and safe disposal practices.

Possible Solutions

- **Organize a cleanup**
Cleanups are an effective way to combat littering and illegal dumping. Cleanups help to build ownership, restore community pride, and send a message that dumping will no longer be tolerated.
- **Organize a special collection event**
Special one-day collection events are worthwhile. These special collection opportunities are very effective when routinely offered, such as each spring or fall as a community cleanup day, but are also successful when offered as community resources permit. These special collections commonly target hard-to-dispose of materials such as tires, appliances, scrap metal, computers, electronics, and household hazardous waste. Most of these items account for what is found in illegal dumps.
- **Physical deterrents**
The placing of guard rails or mounds of dirt at pull-off areas, as well as the planting of trees, can help provide a barrier that will limit accessibility to a site for future dumping.
- **Site monitoring and maintenance**
It is important to monitor a site after an area has been cleaned in order to watch for subsequent dumping or littering, to keep the site clean, and to report any incriminating evidence to the proper enforcement agency. Keeping the site clean makes it easier to spot new trash and discourages subsequent dumping, since trash attracts trash.

Enforcement, with site monitor support, effectively decreases the incidents of dumping and littering. When word gets out that dumping activity will not be tolerated and violators will be caught and prosecuted, dumping decreases.
- **Community education**
Intentional illegal dumping and littering are social problems that require a shift in attitudes and practices. Education is the key to changing values, habits, and attitudes. Education programs should be tailored to inform the community and can take many forms, such as, school/community presentations, press releases, radio and newspaper ads, and publications.
- **Enforcement of existing laws**
Any improper disposal of trash is illegal and violators can be prosecuted. Numerous Pennsylvania agencies enforce laws addressing improper disposal of

trash. The Pennsylvania General Assembly creates and enacts our littering and dumping laws.⁸ County and municipal governments create and enact ordinances that are specific within their local boundaries.

SUMMARY

This survey accounted for 116 illegal dumpsites in Blair County consisting of an estimated 167.5 tons of trash. This is not a comprehensive survey of the entire county as it is expected that there are many more illegal dumpsites on private lands and farms, as well as ones on public lands that have gone undetected. However, the documentation and assessment of these 116 sites in Blair County is a strong step forward in the fight against illegal dumping in Pennsylvania. By providing the needed data to address the problem of illegal dumping, constituents can begin doing so through public policy, resource allocation, community education, and cleanups.

⁸ Read about the Pennsylvania Code at www.pacode.com.

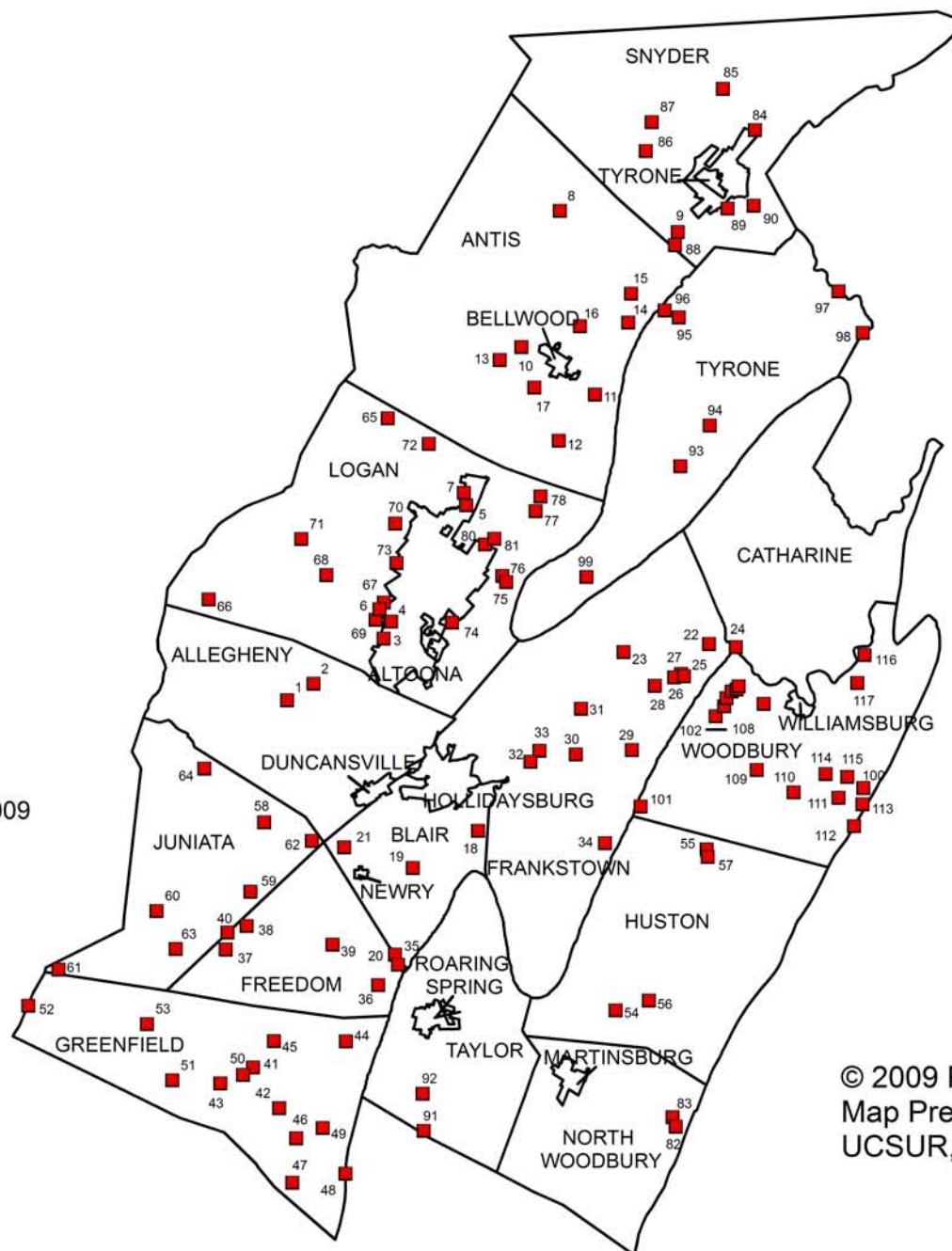


Blair County, Pennsylvania Illegal Dumpsites and Municipalities November 2009

Attachment 1

Legend

■ Illegal Dumpsites as of 11-29-2009



© 2009 PA CleanWays
Map Prepared by Yongfei Zhao
UCSUR, University of Pittsburgh



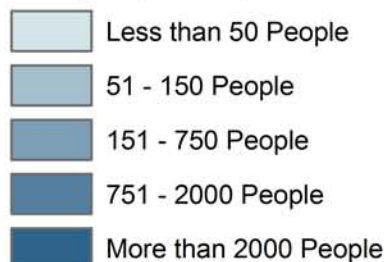


Blair County, Pennsylvania Illegal Dumpsites and Population Density November 2009

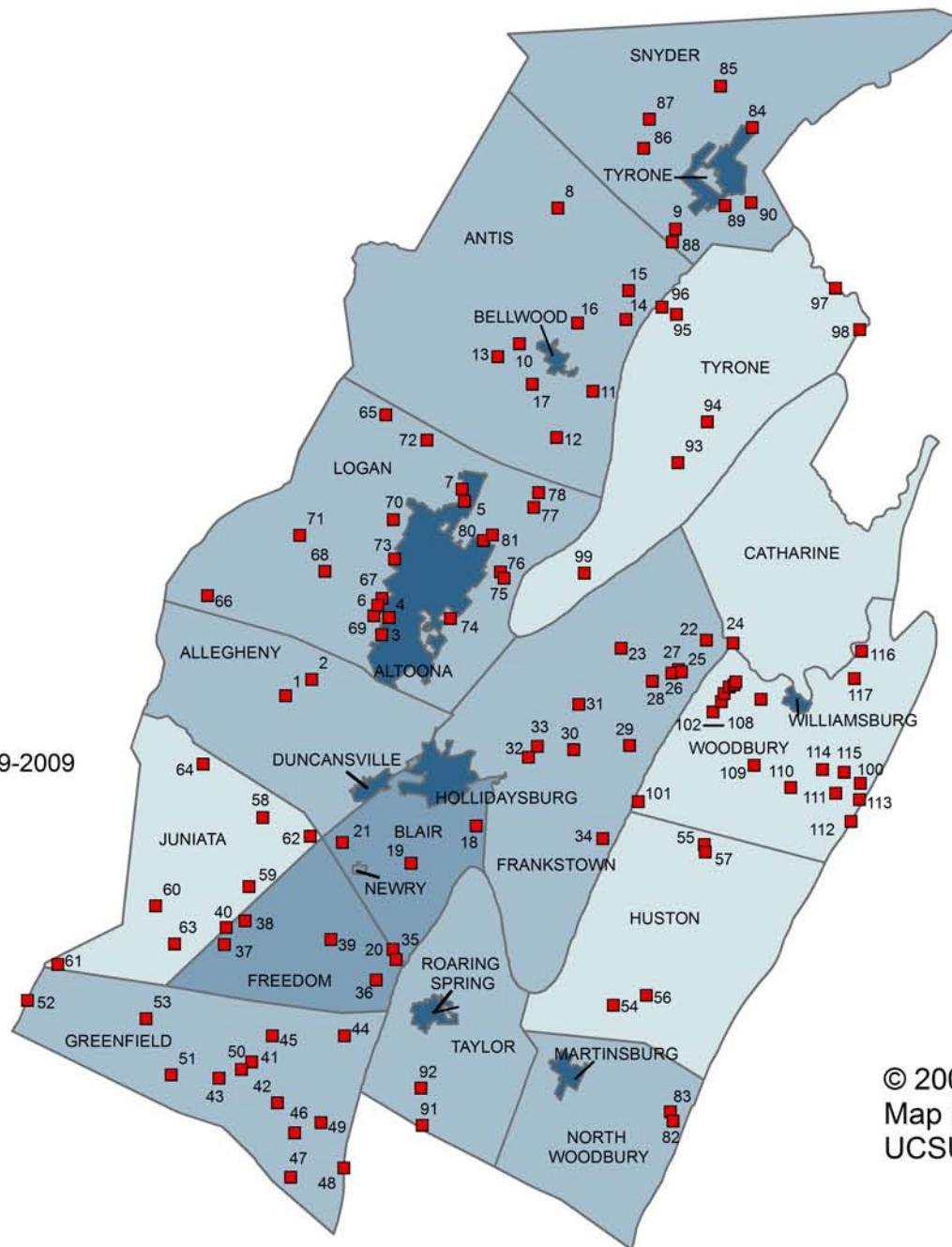
Attachment 2

Population Density by Municipality

People per Square Mile



■ Illegal Dumpsites as of 11-29-2009



© 2009 PA CleanWays
Map Prepared by Yongfei Zhao
UCSUR, University of Pittsburgh





Blair County, Pennsylvania

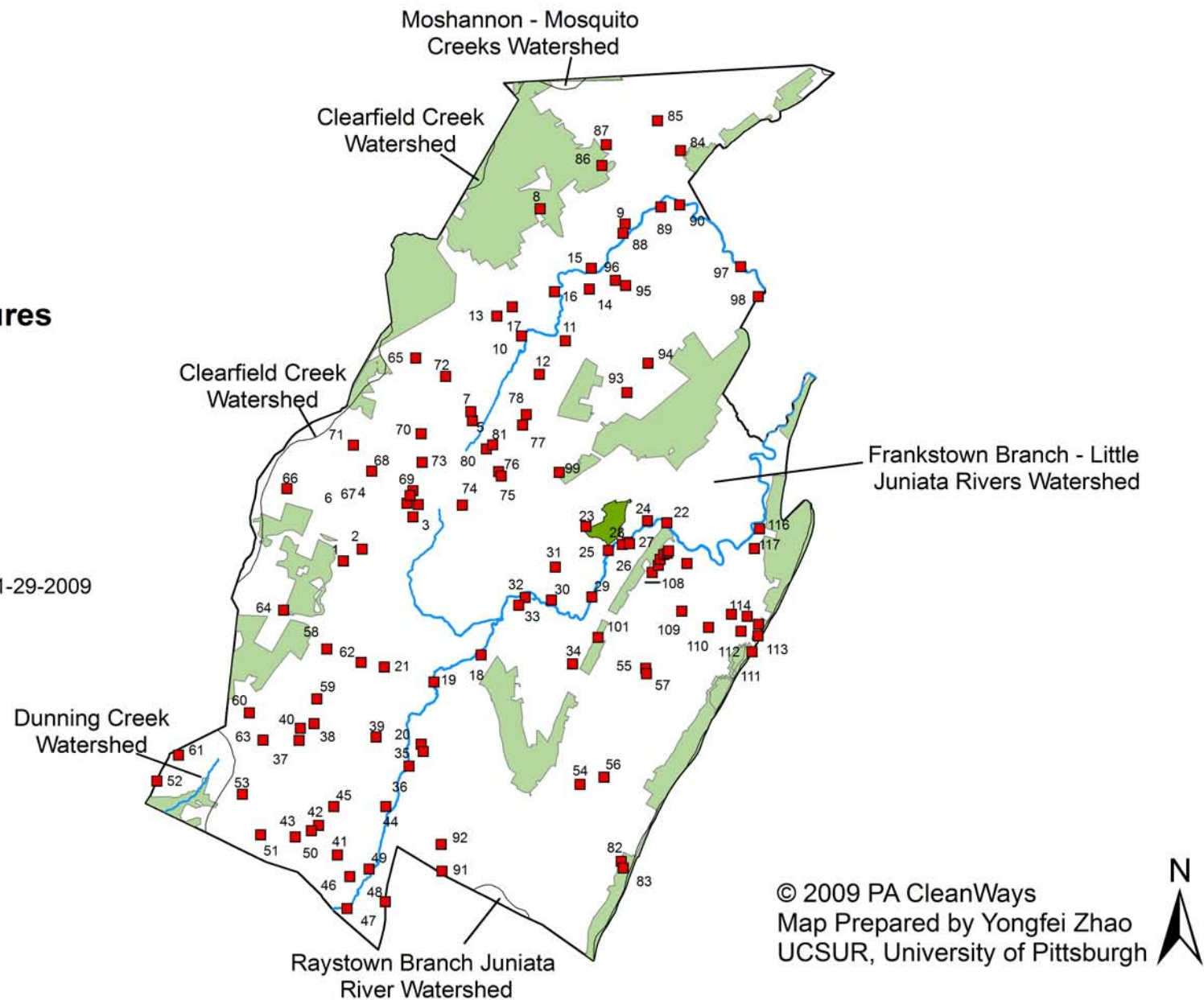
Illegal Dumpsites and Environmental Features

November 2009

Attachment 3

Environmental Features

-  Major Waterways
-  State Gamelands
-  State Parks
-  State Forests
-  Watershed
-  Illegal Dumpsites as of 11-29-2009



Illegal Dumpsites and Trash Collection by Municipality**

Municipality	Illegal Dumpsites	Calculated Tons*	Trash Collection	Recycling Collection	Recycling Drop Off
Allegheny Township	2	9	X		X
Altoona City	5	2.5	X	X	
Antis Township	10	11.75	X	X	
Bellwood Borough	0	0	X		
Blair Township	4	3.75	X	X	
Catharine Township	1	0.25	X		
Duncansville Borough	0	0	X		
Frankstown Township	12	22.75	X		
Freedom Township	6	5.5	X		X
Greenfield Township	13	21.25	X		X
Hollidaysburg Borough	0	0	X	X	
Huston Township	4	3.5	X		
Juniata Township	7	10	X		
Logan Township	16	15	X	X	X
Martinsburg Borough	0	0	X		X
Newry Borough	0	0	X		
North Woodbury Township	2	1.5	X		
Roaring Spring Borough	0	0	X		
Snyder Township	7	10.25	X	X	X
Taylor Township	2	1.5	X		X
Tyrone Borough	0	0	X	X	X
Tyrone Township	7	8.75	X		
Williamsburg Borough	0	0	X		
Woodbury Township	18	40.25	X		X

Sixty-seven percent of Blair County's municipalities have illegal dumping activity.

Twenty-four of Blair County's municipalities have trash collection.

Seven of Blair County's municipalities have a curbside recycling program.

Sixty-four percent of the sites were located in municipalities without a curbside recycling program.

*Quantities assessed at time of survey were estimates based on what was visible.

**Information concerning mandatory trash collection, curbside recycling, and drop off recycling is deemed correct at time of printing and cannot be guaranteed due to changes in ordinances and funding in each individual municipality. Data was provided by the Blair County Department of Solid Waste & Recycling.

Blair County IDS Site Characteristics by Municipality*

Municipality	Site Name	Site Number	Calculated Tons	Demographics	Distance from Waterway	Visibility from Roadway	Road Ownership	Terrain Type	Active
Allegheny Township	Longview Drive	0001	7	Rural	No waterway nearby	Yes	Municipal	Flat	No
Allegheny Township	Sugar Run Road	0002	2	Rural	In Waterway/Wetlands	Partial	State	Medium slope	Yes
Altoona City	Hilltop Circle	0004	0.5	Suburban	No waterway nearby	No	Municipal	Gently sloped	Yes
Altoona City	Mill Run Road	0067	0.75	Suburban	In Waterway/Wetland	No	State	Flat	No
Altoona City	North 10th Street	0005	0.5	Urban	No waterway nearby	Yes	Municipal	Gently sloped	Yes
Altoona City	North 13th Street	0007	0.5	Urban	No waterway nearby	Yes	Municipal	Flat	Yes
Altoona City	Oak Avenue	0003	0.5	Suburban	More than 100 ft	Yes	Municipal	Flat	Yes
Antis Township	State Route 4023	0008	1	Rural	In Waterway/Wetlands	Yes	State	Gently sloped	Yes
Antis Township	Brush Mountain Road	0011	0.5	Rural	More than 100 ft	Partial	Municipal	Medium slope	Yes
Antis Township	Grandview Road	0013	0.5	Rural	More than 100 ft	No	State	Gently sloped	Yes
Antis Township	Hunter Road	0010	0.5	Rural	Within 50 ft	No	Municipal	Gently sloped	Yes
Antis Township	Kerbaugh Road	0017	3	Suburban	More than 100 ft	No	Municipal	Flat	Yes
Antis Township	Kristel Lane	0012	1	Suburban	More than 100 ft	Partial	Municipal	Flat	Yes
Antis Township	River Road	0015	1.75	Suburban	In Waterway/Wetlands	Partial	Municipal	Gently sloped	Yes
Antis Township	Skelp Road Site 1	0014	2	Suburban	More than 100 ft	No	State	Steep slope	Yes
Antis Township	Watts Road	0016	1	Rural	In Waterway/Wetlands	Yes	Municipal	Gently sloped	Yes
Blair Township	Mill Run Road	0021	2	Rural	More than 100 ft	Partial	Municipal	Medium slope	Yes
Blair Township	Monastery Road	0019	0.25	Rural	Within 50 ft	Yes	Municipal	Gently sloped	Yes
Blair Township	Reservoir Road Site 1	0018	1	Rural	More than 100 ft	Yes	State	Medium slope	Yes
Blair Township	Reservoir Road Site 2	0020	0.5	Suburban	In Waterway/Wetland	No	State	Medium slope	Yes
Catharine Township	Route 866	0022	0.25	Rural	Within 50 ft	Partial	State	Steep slope	Yes
Frankstown Township	East Loop Road	0032	0.5	Rural	In Waterway/Wetland	Yes	Municipal	Flat	No
Frankstown Township	Flowing Spring Road	0026	0.5	Rural	More than 100 ft	Partial	Municipal	Gently sloped	No
Frankstown Township	Huntingdon Pike	0024	4	Rural	More than 100 ft	Partial	Municipal	Steep slope	Yes
Frankstown Township	Linds Crossing Road	0030	0.5	Rural	More than 100 ft	No	Municipal	Gently sloped	No
Frankstown Township	Lock Mountain Road Site 1	0033	3	Rural	In Waterway/Wetlands	Partial	State	Flat	Yes
Frankstown Township	Lock Mountain Road Site 2	0034	6	Rural	No waterway nearby	No	State	Steep slope	Yes
Frankstown Township	Long Road	0027	5	Rural	More than 100 ft	Yes	Municipal	Gently sloped	No
Frankstown Township	Quarry Road	0023	0.5	Rural	50 to 100 ft	Yes	State	Flat	No
Frankstown Township	Route 22 Site 1	0025	0.25	Rural	In Waterway/Wetland	Yes	State	Steep slope	Yes
Frankstown Township	Route 22 Site 2	0031	1	Rural	50 to 100 ft	Partial	State	Medium slope	Yes
Frankstown Township	State Route 2022 Site 1	0028	0.5	Rural	Within 50 ft	No	State	Extremely steep	No

Blair County IDS Site Characteristics by Municipality*

Municipality	Site Name	Site Number	Calculated Tons	Demographics	Distance from Waterway	Visibility from Roadway	Road Ownership	Terrain Type	Active
Frankstown Township	State Route 2022 Site 2	0029	1	Rural	In Waterway/Wetland	Yes	State	Medium slope	Yes
Freedom Township	Blacks Road	0035	0.5	Rural	More than 100 ft	No	Municipal	Steep slope	Yes
Freedom Township	Blue Knob Run Road Site 1	0038	1	Rural	50 to 100 ft	Partial	State	Gently sloped	No
Freedom Township	Blue Knob Run Road Site 2	0040	0.5	Rural	In Waterway/Wetland	No	State	Steep slope	Yes
Freedom Township	Cream Hollow Road	0039	1	Rural	More than 100 ft	Yes	Municipal	Gently sloped	Yes
Freedom Township	Mountain Road Site 1	0036	2	Rural	More than 100 ft	No	Municipal	Gently sloped	Yes
Freedom Township	Moyer Road	0037	0.5	Rural	No waterway nearby	Yes	Municipal	Medium slope	Yes
Greenfield Township	Left Hand Gap Road	0051	6	Rural	In Waterway/Wetland	Yes	Municipal	Steep slope	Yes
Greenfield Township	Mountain Road Site 2	0041	0.5	Rural	No waterway nearby	Yes	Municipal	Gently sloped	Yes
Greenfield Township	Pine Hollow Road	0046	0.25	Rural	No waterway nearby	Yes	Municipal	Gently sloped	Yes
Greenfield Township	Piper Hollow Road	0052	0.5	Rural	No waterway nearby	Yes	Municipal	Gently sloped	Yes
Greenfield Township	Right Hand Gap Road	0053	1.25	Rural	In Waterway/Wetland	Partial	State	Gently sloped	Yes
Greenfield Township	Showalter Road	0044	5.5	Rural	No waterway nearby	Yes	Municipal	Gently sloped	No
Greenfield Township	Ski Gap Road	0050	0.5	Rural	In Waterway/Wetland	Yes	State	Gently sloped	Yes
Greenfield Township	Sproul Mountain Road	0048	0.25	Rural	No waterway nearby	Yes	State	Flat	Yes
Greenfield Township	State Route 3004	0042	0.5	Rural	Within 50 ft	No	State	Gently sloped	Yes
Greenfield Township	State Route 3005	0043	2.5	Rural	In Waterway/Wetland	Yes	State	Medium slope	Yes
Greenfield Township	State Route 3006	0047	0.5	Rural	Within 50 ft	No	State	Steep slope	Yes
Greenfield Township	State Route 3008	0045	1	Rural	50 to 100 ft	Yes	State	Gently sloped	Yes
Greenfield Township	Township Road 402	0049	2	Rural	More than 100 ft	Yes	Municipal	Medium slope	Yes
Huston Township	Deafy Hill Road	0057	2	Rural	No waterway nearby	Yes	Municipal	Flat	Yes
Huston Township	Fair Valley Road	0056	0.5	Rural	No waterway nearby	Yes	Municipal	Flat	No
Huston Township	Mine Street	0055	0.5	Rural	No waterway nearby	Partial	Municipal	Steep slope	Yes
Huston Township	Smith Road	0054	0.5	Rural	No waterway nearby	Yes	Municipal	Flat	No
Juniata Township	Dry Run Road	0062	0.5	Rural	More than 100 ft	No	Municipal	Steep slope	No
Juniata Township	Poplar Run Road	0060	1.5	Rural	In Waterway/Wetland	No	State	Medium slope	Yes
Juniata Township	Puzzletown Road	0063	4	Rural	In Waterway/Wetland	No	State	Medium slope	Yes
Juniata Township	Route 164 Site 3	0061	2	Rural	More than 100 ft	Partial	State	Medium slope	Yes
Juniata Township	State Route 3012 (Old Route 22)	0064	0.5	Rural	50 to 100 ft	No	State	Flat	No
Juniata Township	Valley Forge Road Site 1	0058	0.5	Rural	More than 100 ft	No	State	Gently sloped	Yes
Juniata Township	Valley Forge Road Site 2	0059	1	Rural	More than 100 ft	No	State	Gently sloped	Yes
Logan Township	Clemson Road	0077	0.5	Suburban	More than 100 ft	Yes	Municipal	Gently sloped	No

Blair County IDS Site Characteristics by Municipality*

Municipality	Site Name	Site Number	Calculated Tons	Demographics	Distance from Waterway	Visibility from Roadway	Road Ownership	Terrain Type	Active
Logan Township	Erin Drive	0078	1.5	Suburban	In Waterway/Wetland	Partial	Municipal	Steep slope	Yes
Logan Township	Granite Avenue	0075	0.5	Suburban	In Waterway/Wetland	No	Municipal	Medium slope	Yes
Logan Township	Homer Gap Road	0065	1	Rural	More than 100 ft	Yes	Municipal	Gently sloped	Yes
Logan Township	Kettle Road	0076	0.5	Rural	In Waterway/Wetland	Partial	State	Medium slope	Yes
Logan Township	Lookout Road	0072	2	Rural	More than 100 ft	Partial	State	Extremely steep	Yes
Logan Township	McMahon Road	0074	1.5	Suburban	In Waterway/Wetland	Partial	Municipal	Flat	Yes
Logan Township	Old Mill Run Road	0068	0.75	Rural	More than 100 ft	Partial	Municipal	Gently sloped	Yes
Logan Township	Overlook Drive	0080	2.5	Urban	No waterway nearby	No	Municipal	Medium slope	Yes
Logan Township	Route 36	0071	0.5	Rural	More than 100 ft	Partial	State	Flat	Yes
Logan Township	Sharon Road	0070	0.5	Rural	More than 100 ft	Yes	Municipal	Flat	Yes
Logan Township	South 10th Street	0006	0.5	Suburban	In Waterway/Wetland	Partial	Municipal	Steep slope	No
Logan Township	South 11th Street	0069	0.5	Suburban	More than 100 ft	Yes	Municipal	Medium slope	No
Logan Township	Sycamore Street	0081	0.5	Suburban	No waterway nearby	Partial	Municipal	Flat	Yes
Logan Township	Veterans Memorial Highway	0066	0.5	Rural	More than 100 ft	Partial	State	Gently sloped	Yes
Logan Township	Washington Avenue	0073	1	Urban	No waterway nearby	Yes	Municipal	Medium slope	No
North Woodbury Township	Route 164 Site 1	0082	0.5	Rural	More than 100 ft	Yes	State	Gently sloped	Yes
North Woodbury Township	Route 164 Site 2	0083	1	Rural	No waterway nearby	Yes	State	Steep slope	Yes
Snyder Township	Back Vail Road	0084	1.5	Rural	More than 100 ft	No	Municipal	Steep slope	Yes
Snyder Township	Beastons Road	0086	1	Rural	More than 100 ft	Partial	Municipal	Gently sloped	Yes
Snyder Township	Gypsy Camp Hollow Road	0085	3	Rural	In Waterway/Wetland	Yes	Municipal	Gently sloped	Yes
Snyder Township	McFarland Road	0088	0.5	Suburban	More than 100 ft	Partial	Municipal	Gently sloped	Yes
Snyder Township	Plummers Hollow Road	0090	1	Rural	50 to 100 ft	Yes	Municipal	Gently sloped	Yes
Snyder Township	Route 453 Site 1	0087	2.5	Rural	More than 100 ft	No	State	Steep slope	Yes
Snyder Township	Thomastown Road	0089	0.75	Suburban	More than 100 ft	Partial	Municipal	Gently sloped	Yes
Taylor Township	Dick Schoolhouse Road	0092	0.5	Rural	More than 100 ft	No	Municipal	Medium slope	Yes
Taylor Township	Ore Hill Road	0091	1	Rural	No waterway nearby	Yes	Municipal	Flat	Yes
Tyrone Borough	Gates Hill Road	0009	0.5	Rural	No waterway nearby	No	Municipal	Steep slope	Yes
Tyrone Township	Heidburg Road	0095	1	Rural	In Waterway/Wetland	Yes	Municipal	Flat	Yes
Tyrone Township	Hill Road	0097	0.5	Rural	Within 50 ft	Yes	Municipal	Gently sloped	Yes
Tyrone Township	Route 453 Site 2	0098	0.75	Rural	More than 100 ft	Yes	State	Flat	Yes
Tyrone Township	Sickles Corner Back Road Site 1	0093	2	Rural	Within 50 ft	Yes	Municipal	Gently sloped	No
Tyrone Township	Sickles Corner Back Road Site 2	0094	2	Rural	More than 100 ft	Yes	Municipal	Gently sloped	Yes

Blair County IDS Site Characteristics by Municipality*

Municipality	Site Name	Site Number	Calculated Tons	Demographics	Distance from Waterway	Visibility from Roadway	Road Ownership	Terrain Type	Active
Tyrone Township	Skelp Road Site 2	0096	0.5	Rural	More than 100 ft	Partial	State	Medium slope	Yes
Tyrone Township	Wenrich Road	0099	2	Rural	More than 100 ft	Yes	Private	Gently sloped	No
Woodbury Township	Airport Road	0108	0.25	Rural	No waterway nearby	Yes	Municipal	Flat	Yes
Woodbury Township	Biddle Road Site 1	0111	15	Rural	No waterway nearby	Yes	Municipal	Extremely steep	Yes
Woodbury Township	Biddle Road Site 2	0114	0.5	Rural	50 to 100 ft	Partial	Municipal	Steep slope	No
Woodbury Township	Lock Mountain Road Site 3	0101	0.5	Rural	No waterway nearby	No	State	Medium slope	Yes
Woodbury Township	Lower Clover Creek Road	0117	0.5	Rural	Within 50 ft	Yes	Municipal	Flat	No
Woodbury Township	Mid State Trail	0113	0.5	Rural	No waterway nearby	Yes	Private	Flat	No
Woodbury Township	Mocks Bridge Road	0110	1.5	Rural	Within 50 ft	No	Municipal	Extremely steep	No
Woodbury Township	Ridge Road	0109	3	Rural	No waterway nearby	Partial	Municipal	Gently sloped	Yes
Woodbury Township	SR 2013	0116	0.5	Rural	50 to 100 ft	Yes	State	Gently sloped	Yes
Woodbury Township	Troxell Road	0115	2.5	Rural	Within 50 ft	Yes	Municipal	Flat	Yes
Woodbury Township	Tussey Mountain Road Site 1	0100	0.5	Rural	No waterway nearby	No	Municipal	Extremely steep	Yes
Woodbury Township	Tussey Mountain Road Site 2	0112	0.5	Rural	No waterway nearby	No	Municipal	Steep slope	No
Woodbury Township	Wertz Road Site 1	0102	6	Rural	50 to 100 ft	Yes	Municipal	Flat	Yes
Woodbury Township	Wertz Road Site 2	0103	0.5	Rural	Within 50 ft	No	Municipal	Steep slope	Yes
Woodbury Township	Wertz Road Site 3	0104	2.5	Rural	More than 100 ft	No	Municipal	Extremely steep	Yes
Woodbury Township	Wertz Road Site 4	0105	0.5	Rural	More than 100 ft	Yes	Municipal	Flat	Yes
Woodbury Township	Wertz Road Site 5	0106	1	Rural	Within 50 ft	No	Municipal	Steep slope	No
Woodbury Township	Wertz Road Site 6	0107	4	Rural	In Waterway/Wetland	No	Municipal	Extremely steep	Yes

Total Number of Sites: 116

Total Calculated Tons: 167.50

* Characteristics assessed at time of survey were based on what was visible.

Blair County Illegal Dump Survey Waste Characteristics by Municipality*

Municipality	Site Name	Site Number	Calculated Tons	Bagged Trash	Household Trash	Recyclables	HHW	Tires	Clean Fill	C_D Waste	Yard Waste	White Goods	Electronics	Televisions	Furniture	Mattresses	Vehicle Parts	Car Batteries
Allegheny Township	Longview Drive	0001	7	No	No	No	No	350	No	No	No	0	0	0	0	0	No	0
Allegheny Township	Sugar Run Road	0002	2	Yes	No	Yes	No	48	No	Yes	No	1	0	1	0	0	No	0
Altoona City	Hilltop Circle	0004	0.5	Yes	No	Yes	No	4	No	No	Yes	0	0	0	1	0	No	0
Altoona City	Mill Run Road	0067	0.75	Yes	Yes	Yes	No	15	No	No	No	0	0	0	0	1	No	0
Altoona City	North 10th Street	0005	0.5	No	Yes	Yes	No	1	Yes	No	No	0	0	0	1	0	Yes	0
Altoona City	North 13th Street	0007	0.5	No	No	Yes	No	8	No	No	Yes	0	0	0	0	0	No	0
Altoona City	Oak Avenue	0003	0.5	No	Yes	Yes	No	21	Yes	No	Yes	0	0	0	0	0	No	0
Antis Township	State Route 4023	0008	1	Yes	No	Yes	No	2	No	Yes	Yes	0	0	0	0	0	No	0
Antis Township	Brush Mountain Road	0011	0.5	Yes	Yes	Yes	No	8	No	Yes	Yes	0	1	0	0	0	No	0
Antis Township	Grandview Road	0013	0.5	Yes	Yes	Yes	No	1	No	No	No	0	0	0	0	0	No	0
Antis Township	Hunter Road	0010	0.5	Yes	Yes	Yes	No	3	No	Yes	No	0	0	0	0	0	No	0
Antis Township	Kerbaugh Road	0017	3	Yes	Yes	Yes	No	10	Yes	Yes	Yes	0	0	1	1	1	Yes	0
Antis Township	Kristel Lane	0012	1	No	No	Yes	No	1	Yes	No	Yes	0	0	1	0	0	No	0
Antis Township	River Road	0015	1.75	Yes	Yes	Yes	No	14	Yes	Yes	No	0	0	2	0	0	Yes	0
Antis Township	Skelp Road Site 1	0014	2	Yes	Yes	Yes	No	69	No	Yes	No	0	0	0	2	1	Yes	0
Antis Township	Watts Road	0016	1	Yes	Yes	Yes	No	1	Yes	No	Yes	0	0	0	1	0	Yes	0
Blair Township	Mill Run Road	0021	2	Yes	Yes	Yes	Yes	27	No	Yes	No	2	0	0	0	0	No	0
Blair Township	Monastery Road	0019	0.25	Yes	No	Yes	Yes	4	No	No	No	0	0	0	0	0	No	0
Blair Township	Reservoir Road Site 1	0018	1	No	Yes	Yes	No	6	Yes	Yes	Yes	0	1	0	0	0	Yes	0
Blair Township	Reservoir Road Site 2	0020	0.5	Yes	Yes	Yes	Yes	1	No	No	No	0	0	0	1	0	No	0
Catharine Township	Route 866	0022	0.25	Yes	Yes	Yes	Yes	0	Yes	Yes	No	0	0	0	0	0	No	0
Frankstown Township	East Loop Road	0032	0.5	No	No	No	No	4	No	No	No	0	0	0	0	0	Yes	0
Frankstown Township	Flowing Spring Road	0026	0.5	No	No	No	No	1	No	Yes	No	1	0	0	0	0	No	0
Frankstown Township	Huntingdon Pike	0024	4	No	Yes	No	Yes	6	No	Yes	No	2	2	12	0	3	No	0
Frankstown Township	Linds Crossing Road	0030	0.5	No	No	Yes	No	0	No	No	No	0	0	0	0	0	No	0
Frankstown Township	Lock Mountain Road Site 1	0033	3	Yes	Yes	Yes	Yes	22	Yes	Yes	Yes	0	0	1	0	0	Yes	0
Frankstown Township	Lock Mountain Road Site 2	0034	6	Yes	Yes	Yes	Yes	57	Yes	No	No	1	0	0	3	3	No	0
Frankstown Township	Long Road	0027	5	No	Yes	Yes	Yes	87	No	Yes	Yes	0	2	1	0	5	Yes	0

Blair County Illegal Dump Survey Waste Characteristics by Municipality*

Municipality	Site Name	Site Number	Calculated Tons	Bagged Trash	Household Trash	Recyclables	HHW	Tires	Clean Fill	C_D Waste	Yard Waste	White Goods	Electronics	Televisions	Furniture	Mattresses	Vehicle Parts	Car Batteries
Frankstown Township	Quarry Road	0023	0.5	No	No	No	No	1	No	No	Yes	0	0	0	1	0	No	0
Frankstown Township	Route 22 Site 1	0025	0.25	Yes	No	Yes	No	4	No	No	No	0	0	0	0	0	No	0
Frankstown Township	Route 22 Site 2	0031	1	Yes	Yes	Yes	Yes	4	Yes	Yes	No	1	0	0	0	0	No	0
Frankstown Township	State Route 2022 Site 1	0028	0.5	No	Yes	Yes	No	0	No	No	No	0	0	0	0	1	No	0
Frankstown Township	State Route 2022 Site 2	0029	1	Yes	Yes	No	No	4	No	Yes	No	0	0	0	0	0	Yes	0
Freedom Township	Blacks Road	0035	0.5	Yes	Yes	Yes	No	2	No	Yes	No	0	1	1	1	0	No	0
Freedom Township	Blue Knob Run Road Site 1	0038	1	No	Yes	Yes	No	0	No	Yes	No	0	0	0	0	0	No	0
Freedom Township	Blue Knob Run Road Site 2	0040	0.5	Yes	Yes	Yes	Yes	1	No	No	No	0	0	0	0	0	Yes	0
Freedom Township	Cream Hollow Road	0039	1	Yes	Yes	Yes	Yes	21	No	No	No	0	0	0	0	0	No	0
Freedom Township	Mountain Road Site 1	0036	2	Yes	Yes	Yes	Yes	3	No	Yes	No	1	0	1	0	0	Yes	0
Freedom Township	Moyer Road	0037	0.5	Yes	No	Yes	No	0	No	No	No	0	0	0	1	1	No	0
Greenfield Township	Left Hand Gap Road	0051	6	Yes	Yes	Yes	Yes	189	No	Yes	Yes	0	0	1	6	4	No	0
Greenfield Township	Mountain Road Site 2	0041	0.5	Yes	Yes	Yes	Yes	15	No	Yes	No	0	0	0	0	0	Yes	0
Greenfield Township	Pine Hollow Road	0046	0.25	Yes	No	Yes	No	5	No	No	No	0	0	0	0	0	No	0
Greenfield Township	Piper Hollow Road	0052	0.5	Yes	Yes	Yes	Yes	7	No	Yes	No	0	0	0	0	0	No	1
Greenfield Township	Right Hand Gap Road	0053	1.25	No	No	No	Yes	14	No	No	No	0	0	0	0	0	No	0
Greenfield Township	Showalter Road	0044	5.5	Yes	No	Yes	No	250	No	No	No	0	0	0	0	0	No	0
Greenfield Township	Ski Gap Road	0050	0.5	Yes	Yes	Yes	No	7	No	Yes	Yes	0	0	0	0	0	No	0
Greenfield Township	Sproul Mountain Road	0048	0.25	Yes	No	Yes	No	4	No	Yes	No	0	0	0	1	1	No	0
Greenfield Township	State Route 3004	0042	0.5	Yes	Yes	Yes	Yes	12	No	No	No	0	0	1	0	0	Yes	0
Greenfield Township	State Route 3005	0043	2.5	Yes	Yes	Yes	Yes	74	No	No	No	0	3	1	0	0	No	0
Greenfield Township	State Route 3006	0047	0.5	Yes	Yes	Yes	No	8	No	No	No	0	0	0	0	0	No	3
Greenfield Township	State Route 3008	0045	1	Yes	Yes	Yes	No	25	Yes	No	Yes	0	1	5	0	0	No	0
Greenfield Township	Township Road 402	0049	2	Yes	Yes	Yes	Yes	25	Yes	Yes	Yes	0	0	0	1	0	No	0
Huston Township	Deafy Hill Road	0057	2	No	Yes	Yes	Yes	1	No	Yes	Yes	0	2	0	1	0	No	0
Huston Township	Fair Valley Road	0056	0.5	No	No	No	No	15	Yes	No	Yes	0	0	0	0	0	No	0
Huston Township	Mine Street	0055	0.5	Yes	Yes	Yes	No	0	No	No	Yes	0	0	0	0	0	No	0
Huston Township	Smith Road	0054	0.5	No	No	No	Yes	5	No	Yes	No	0	0	0	0	0	No	0

Blair County Illegal Dump Survey Waste Characteristics by Municipality*

Municipality	Site Name	Site Number	Calculated Tons	Bagged Trash	Household Trash	Recyclables	HHW	Tires	Clean Fill	C_D Waste	Yard Waste	White Goods	Electronics	Televisions	Furniture	Mattresses	Vehicle Parts	Car Batteries
Juniata Township	Dry Run Road	0062	0.5	No	Yes	Yes	No	6	No	No	No	0	0	0	0	0	No	0
Juniata Township	Poplar Run Road	0060	1.5	Yes	No	Yes	No	37	No	No	No	0	0	0	1	1	Yes	0
Juniata Township	Puzzletown Road	0063	4	Yes	Yes	Yes	No	50	Yes	Yes	No	5	0	4	0	0	Yes	2
Juniata Township	Route 164 Site 3	0061	2	Yes	Yes	Yes	No	41	No	No	No	0	0	0	0	1	No	0
Juniata Township	State Route 3012 (Old Route 22)	0064	0.5	No	No	No	No	0	No	Yes	No	1	0	1	1	0	No	0
Juniata Township	Valley Forge Road Site 1	0058	0.5	Yes	Yes	Yes	No	8	No	Yes	No	0	0	0	1	1	Yes	0
Juniata Township	Valley Forge Road Site 2	0059	1	No	No	Yes	No	15	No	Yes	No	0	1	0	0	2	No	0
Logan Township	Clemson Road	0077	0.5	No	Yes	Yes	No	2	No	No	No	0	0	0	0	0	No	0
Logan Township	Erin Drive	0078	1.5	No	No	Yes	No	0	No	Yes	Yes	0	0	0	0	0	No	0
Logan Township	Granite Avenue	0075	0.5	Yes	No	Yes	No	2	Yes	Yes	Yes	0	0	0	0	0	Yes	0
Logan Township	Homer Gap Road	0065	1	Yes	Yes	Yes	No	4	Yes	Yes	Yes	0	0	0	0	0	No	0
Logan Township	Kettle Road	0076	0.5	Yes	No	No	No	6	Yes	No	Yes	0	0	0	0	0	No	0
Logan Township	Lookout Road	0072	2	Yes	Yes	Yes	No	0	No	Yes	No	0	0	0	0	0	Yes	0
Logan Township	McMahon Road	0074	1.5	No	No	Yes	No	3	Yes	Yes	Yes	0	0	0	3	1	Yes	0
Logan Township	Old Mill Run Road	0068	0.75	Yes	No	Yes	No	17	Yes	No	No	0	0	0	0	0	No	0
Logan Township	Overlook Drive	0080	2.5	No	No	No	No	0	No	No	Yes	0	0	0	0	0	No	0
Logan Township	Route 36	0071	0.5	Yes	Yes	Yes	No	2	No	Yes	Yes	0	0	0	1	0	No	0
Logan Township	Sharon Road	0070	0.5	Yes	Yes	Yes	No	2	Yes	Yes	Yes	0	0	0	0	1	Yes	0
Logan Township	South 10th Street	0006	0.5	No	No	No	No	5	No	No	No	2	0	0	1	0	No	0
Logan Township	South 11th Street	0069	0.5	Yes	No	No	No	8	No	No	No	0	0	0	0	0	No	0
Logan Township	Sycamore Street	0081	0.5	No	No	Yes	No	5	Yes	Yes	Yes	0	0	0	0	0	No	0
Logan Township	Veterans Memorial Highway	0066	0.5	Yes	No	No	No	9	No	Yes	Yes	0	0	1	0	0	No	0
Logan Township	Washington Avenue	0073	1	No	No	No	No	11	Yes	Yes	No	0	0	0	0	0	Yes	0
North Woodbury Township	Route 164 Site 1	0082	0.5	Yes	Yes	Yes	Yes	7	No	No	No	0	0	0	0	0	No	0
North Woodbury Township	Route 164 Site 2	0083	1	Yes	Yes	Yes	Yes	11	No	No	No	1	0	1	0	0	No	0
Snyder Township	Back Vail Road	0084	1.5	No	No	Yes	No	2	No	No	No	0	0	1	0	0	No	0
Snyder Township	Beastons Road	0086	1	Yes	Yes	Yes	No	1	No	Yes	No	0	1	1	1	0	No	0
Snyder Township	Gypsy Camp Hollow Road	0085	3	Yes	Yes	Yes	No	35	No	Yes	Yes	0	0	1	1	0	Yes	0

Blair County Illegal Dump Survey Waste Characteristics by Municipality*

Municipality	Site Name	Site Number	Calculated Tons	Bagged Trash	Household Trash	Recyclables	HHW	Tires	Clean Fill	C_D Waste	Yard Waste	White Goods	Electronics	Televisions	Furniture	Mattresses	Vehicle Parts	Car Batteries
Snyder Township	McFarland Road	0088	0.5	No	Yes	Yes	No	7	No	Yes	No	0	0	1	0	0	No	0
Snyder Township	Plummers Hollow Road	0090	1	Yes	Yes	No	No	4	Yes	Yes	No	0	0	2	1	1	No	0
Snyder Township	Route 453 Site 1	0087	2.5	Yes	Yes	Yes	No	14	No	Yes	Yes	0	0	2	0	0	No	0
Snyder Township	Thomastown Road	0089	0.75	Yes	Yes	Yes	No	15	Yes	Yes	No	0	0	0	1	1	No	0
Taylor Township	Dick Schoolhouse Road	0092	0.5	No	Yes	Yes	No	2	No	No	Yes	1	1	0	0	0	No	0
Taylor Township	Ore Hill Road	0091	1	Yes	No	Yes	No	35	No	No	No	0	0	0	0	0	No	0
Tyrone Borough	Gates Hill Road	0009	0.5	No	No	No	No	4	No	Yes	No	0	0	0	0	0	No	0
Tyrone Township	Heidburg Road	0095	1	Yes	Yes	Yes	Yes	0	No	No	Yes	0	0	0	0	0	No	0
Tyrone Township	Hill Road	0097	0.5	No	No	Yes	No	0	No	Yes	Yes	1	0	0	0	0	No	0
Tyrone Township	Route 453 Site 2	0098	0.75	Yes	No	Yes	Yes	6	No	No	No	0	0	0	0	1	No	0
Tyrone Township	Sickles Corner Back Road Site 1	0093	2	No	Yes	Yes	No	0	Yes	Yes	Yes	0	0	0	0	0	No	0
Tyrone Township	Sickles Corner Back Road Site 2	0094	2	Yes	Yes	Yes	Yes	6	Yes	Yes	No	0	1	2	0	0	No	0
Tyrone Township	Skelp Road Site 2	0096	0.5	No	No	No	No	3	No	No	Yes	0	0	0	0	0	No	0
Tyrone Township	Wenrich Road	0099	2	No	No	No	Yes	65	No	No	No	0	0	0	0	0	No	0
Woodbury Township	Airport Road	0108	0.25	No	Yes	Yes	No	0	No	No	Yes	0	0	0	0	0	No	0
Woodbury Township	Biddle Road Site 1	0111	15	Yes	Yes	Yes	Yes	10	Yes	Yes	Yes	20	0	0	1	0	No	0
Woodbury Township	Biddle Road Site 2	0114	0.5	No	No	No	No	0	No	No	No	0	0	0	0	0	Yes	0
Woodbury Township	Lock Mountain Road Site 3	0101	0.5	Yes	Yes	Yes	No	6	No	No	Yes	0	0	0	0	0	No	0
Woodbury Township	Lower Clover Creek Road	0117	0.5	No	Yes	No	No	1	No	No	No	0	0	1	1	1	No	0
Woodbury Township	Mid State Trail	0113	0.5	Yes	Yes	Yes	Yes	0	No	Yes	No	0	0	0	0	0	No	0
Woodbury Township	Mocks Bridge Road	0110	1.5	No	Yes	No	No	0	Yes	Yes	No	2	1	0	0	1	No	0
Woodbury Township	Ridge Road	0109	3	Yes	Yes	Yes	Yes	31	No	No	Yes	5	4	5	5	0	No	1
Woodbury Township	SR 2013	0116	0.5	No	Yes	Yes	No	0	No	No	No	1	0	0	0	0	Yes	0
Woodbury Township	Troxell Road	0115	2.5	No	No	No	No	125	No	No	No	0	0	0	0	0	No	0
Woodbury Township	Tussey Mountain Road Site 1	0100	0.5	Yes	Yes	Yes	Yes	2	No	No	No	0	1	1	0	2	No	0
Woodbury Township	Tussey Mountain Road Site 2	0112	0.5	Yes	No	No	No	0	No	Yes	No	1	0	0	1	0	No	0
Woodbury Township	Wertz Road Site 1	0102	6	Yes	Yes	Yes	Yes	5	Yes	Yes	Yes	1	0	4	10	7	No	0
Woodbury Township	Wertz Road Site 2	0103	0.5	Yes	No	Yes	No	11	No	No	No	1	0	0	0	1	No	0

Blair County Illegal Dump Survey Waste Characteristics by Municipality*

Municipality	Site Name	Site Number	Calculated Tons	Bagged Trash	Household Trash	Recyclables	HHW	Tires	Clean Fill	C_D Waste	Yard Waste	White Goods	Electronics	Televisions	Furniture	Mattresses	Vehicle Parts	Car Batteries
Woodbury Township	Wertz Road Site 3	0104	2.5	Yes	No	No	Yes	40	No	Yes	No	2	0	3	0	0	No	0
Woodbury Township	Wertz Road Site 4	0105	0.5	Yes	No	Yes	No	2	No	Yes	No	0	0	0	0	0	No	0
Woodbury Township	Wertz Road Site 5	0106	1	No	No	No	Yes	40	No	No	No	0	0	0	0	0	No	0
Woodbury Township	Wertz Road Site 6	0107	4	Yes	Yes	Yes	Yes	5	No	No	Yes	3	0	2	3	0	No	0

Total Number of Sites: 116

Total Calculated Tons: 167.50

* Characteristics assessed at time of survey were based on what was visible.

Illegal Dumpsite Characteristics Summary Chart by County

Dumpsite Characteristics	Allegheny	Adams	Armstrong	Beaver	Bedford	Berks	Blair	Butler	Cambria	Cameron
Total Sites Surveyed	202	116	176	120	128	100	116	217	203	6
Estimated Tons	344	218	585	333	870	185	168	317	254	18
Location Demographics										
Rural	15%	94%	99%	93%	90%	73%	82%	88%	87%	100%
Suburban	70%	6%	1%	6%	10%	25%	15%	11%	13%	0%
Urban	15%	0%	0%	2%	0%	2%	3%	1%	0%	0%
Visible from Road										
Yes	62%	35%	37%	30%	70%	63%	45%	60%	61%	17%
No	11%	22%	11%	34%	7%	10%	30%	6%	7%	83%
Partial	27%	42%	52%	36%	23%	27%	25%	34%	32%	0%
Distance from Waterway										
Directly In Waterway/Wetlands	24%	9%	14%	22%	6%	7%	22%	16%	13%	0%
Within 50 Feet and/or Directly in Waterway/Wetlands	45%	35%	32%	40%	22%	37%	33%	27%	27%	17%
Over 50 Feet or No Waterway	55%	65%	68%	60%	78%	63%	67%	73%	73%	83%
Road Type										
State	37%	22%	8%	11%	24%	18%	35%	3%	13%	67%
Municipal/County	49%	64%	90%	81%	73%	81%	63%	97%	86%	33%
Forest/Park	0%	13%	1%	8%	0%	1%	0%	0%	0%	0%
Private/Undetermined	14%	1%	1%	0%	3%	0%	2%	0%	1%	0%
Terrain										
Flat	52%	65%	10%	18%	24%	30%	23%	15%	38%	0%
Gently Sloped	22%	22%	20%	19%	31%	24%	34%	29%	26%	33%
Medium Sloped	14%	10%	28%	30%	18%	28%	18%	33%	28%	17%
Steep	12%	3%	52%	33%	27%	18%	24%	23%	8%	50%

Illegal Dumpsite Characteristics Summary Chart by County

Dumpsite Characteristics	Centre	Clarion	Clearfield	Clinton	Columbia	Crawford	Cumberland	Dauphin	Elk	Erie
Total Sites Surveyed	56	102	112	50	39	82	37	138	79	83
Estimated Tons	128	263	324	65	382	115	132	468	119	121
Location Demographics										
Rural	96%	100%	98%	100%	100%	95%	78%	61%	96%	71%
Suburban	4%	0%	1%	0%	0%	5%	19%	16%	1%	16%
Urban	0%	0%	1%	0%	0%	0%	3%	23%	3%	13%
Visible from Road										
Yes	73%	52%	38%	18%	85%	48%	46%	53%	71%	53%
No	7%	13%	21%	56%	2%	33%	11%	10%	8%	27%
Partial	20%	35%	41%	26%	13%	19%	43%	37%	21%	20%
Distance from Waterway										
Directly In Waterway/Wetlands	5%	6%	11%	14%	12%	6%	11%	10%	7%	19%
Within 50 Feet and/or Directly in Waterway/Wetlands	16%	15%	27%	72%	32%	43%	24%	25%	23%	30%
Over 50 Feet or No Waterway	13%	85%	73%	28%	68%	57%	76%	75%	77%	70%
Road Type										
State	18%	6%	21%	20%	13%	6%	11%	8%	23%	20%
Municipal/County	67%	93%	77%	46%	87%	93%	89%	76%	66%	78%
Forest/Park	13%	1%	0%	34%	0%	1%	0%	0%	7%	0%
Private/Undetermined	2%	0%	2%	0%	0%	0%	0%	16%	4%	2%
Terrain										
Flat	32%	12%	15%	18%	23%	28%	14%	46%	26%	45%
Gently Sloped	27%	26%	23%	32%	41%	28%	32%	20%	37%	22%
Medium Sloped	20%	27%	44%	36%	23%	24%	32%	9%	23%	14%
Steep	21%	34%	18%	14%	13%	20%	22%	25%	14%	19%

Illegal Dumpsite Characteristics Summary Chart by County

Dumpsite Characteristics	Fayette	Forest	Franklin	Fulton	Greene	Huntingdon	Indiana	Jefferson	Juniata	Lackawanna
Total Sites Surveyed	163	15	128	19	49	202	114	67	49	92
Estimated Tons	736	64	181	169	450	259	680	541	80	424
Location Demographics										
Rural	93%	100%	77%	100%	100%	87%	99%	100%	92%	45%
Suburban	7%	0%	13%	0%	0%	12%	1%	0%	4%	30%
Urban	0%	0%	10%	0%	0%	1%	0%	0%	4%	25%
Visible from Road										
Yes	73%	33%	33%	90%	84%	34%	53%	85%	27%	66%
No	10%	34%	14%	5%	8%	13%	31%	15%	53%	8%
Partial	17%	33%	53%	5%	8%	53%	16%	0%	20%	26%
Distance from Waterway										
Directly In Waterway/Wetlands	16%	0%	13%	0%	8%	7%	15%	12%	20%	7%
Within 50 Feet and/or Directly in Waterway/Wetlands	37%	13%	49%	5%	22%	35%	37%	25%	39%	23%
Over 50 Feet or No Waterway	63%	87%	51%	95%	78%	65%	63%	75%	61%	77%
Road Type										
State	24%	33%	23%	47%	4%	39%	4%	14%	31%	32%
Municipal/County	72%	40%	64%	48%	94%	59%	90%	82%	69%	68%
Forest/Park	0%	27%	12%	5%	0%	1%	0%	0%	0%	0%
Private/Undetermined	4%	0%	1%	0%	2%	1%	6%	4%	0%	0%
Terrain										
Flat	32%	40%	36%	26%	22%	22%	25%	54%	8%	47%
Gently Sloped	17%	0%	35%	10%	29%	31%	20%	25%	31%	15%
Medium Sloped	21%	20%	14%	32%	27%	26%	28%	9%	24%	13%
Steep	30%	40%	14%	32%	22%	21%	27%	12%	37%	25%

Illegal Dumpsite Characteristics Summary Chart by County

Dumpsite Characteristics	Lancaster	Lawrence	Lebanon	Luzerne	McKean	Mercer	Mifflin	Montgomery	Northumberland	Perry
Total Sites Surveyed	16	31	43	159	73	143	31	19	125	105
Estimated Tons	74	112	36	1723	165.5	154	30	17	1634	107
Location Demographics										
Rural	87%	68%	77%	75%	100%	99%	100%	68%	99%	100%
Suburban	13%	19%	19%	23%	0%	1%	0%	11%	1%	0%
Urban	0%	13%	4%	2%	0%	0%	0%	21%	0%	0%
Visible from Road										
Yes	56%	71%	35%	59%	52%	60%	39%	84%	62%	79%
No	6%	3%	30%	18%	29%	13%	38%	0%	8%	9%
Partial	38%	26%	35%	23%	19%	27%	23%	16%	30%	12%
Distance from Waterway										
Directly In Waterway/Wetlands	13%	26%	23%	5%	12%	13%	19%	0%	11%	5%
Within 50 Feet and/or Directly in Waterway/Wetlands	31%	48%	42%	11%	26%	34%	35%	16%	19%	39%
Over 50 Feet or No Waterway	69%	52%	58%	89%	74%	66%	65%	84%	81%	61%
Road Type										
State	6%	20%	35%	32%	29%	5%	45%	11%	16%	23%
Municipal/County	88%	74%	58%	32%	60%	94%	52%	89%	50%	77%
Forest/Park	0%	3%	2%	0%	11%	0%	0%	0%	0%	0%
Private/Undetermined	6%	3%	5%	36%	0%	1%	3%	0%	34%	0%
Terrain										
Flat	44%	32%	40%	40%	10%	55%	13%	79%	31%	29%
Gently Sloped	19%	19%	16%	32%	31%	20%	16%	0%	29%	34%
Medium Sloped	25%	23%	23%	17%	18%	18%	42%	0%	18%	17%
Steep	12%	26%	21%	11%	41%	7%	29%	21%	22%	20%

Illegal Dumpsite Characteristics Summary Chart by County

Dumpsite Characteristics	Schuylkill	Snyder	Somerset	Union	Venango	Warren	Washington	Westmoreland	York
Total Sites Surveyed	74	45	210	21	174	59	126	310	274
Estimated Tons	523	58	543	43	386	292	317	335	263
Location Demographics									
Rural	96%	0%	95%	90%	98%	95%	100%	89%	67%
Suburban	4%	0%	5%	10%	2%	5%	0%	8%	24%
Urban	0%	100%	0%	0%	0%	0%	0%	3%	9%
Visible from Road									
Yes	47%	56%	42%	57%	90%	49%	60%	83%	26%
No	7%	11%	22%	5%	2%	12%	27%	6%	2%
Partial	46%	33%	36%	38%	8%	39%	13%	11%	72%
Distance from Waterway									
Directly In Waterway/Wetlands	5%	16%	5%	10%	13%	7%	6%	31%	15%
Within 50 Feet and/or Directly in Waterway/Wetlands	28%	36%	15%	24%	44%	15%	41%	44%	47%
Over 50 Feet or No Waterway	72%	64%	85%	76%	56%	84%	59%	56%	53%
Road Type									
State	42%	40%	27%	5%	19%	14%	77%	26%	9%
Municipal/County	58%	60%	72%	90%	78%	76%	23%	73%	89%
Forest/Park	0%	0%	1%	5%	3%	10%	0%	>1%	0%
Private/Undetermined	0%	0%	0%	0%	0%	0%	0%	1%	1%
Terrain									
Flat	43%	47%	33%	29%	26%	25%	48%	24%	42%
Gently Sloped	23%	31%	20%	33%	23%	14%	43%	25%	34%
Medium Sloped	14%	7%	23%	29%	25%	24%	7%	26%	17%
Steep	20%	15%	24%	9%	26%	37%	2%	25%	8%

Blair County Illegal Dumpsite Survey Acknowledgements

Produced by PA CleanWays – Keep Pennsylvania Beautiful

Jeffery A. Brubaker, Surveyor, PA CleanWays – Keep Pennsylvania Beautiful
William L. Bow, Surveyor, PA CleanWays – Keep Pennsylvania Beautiful

Yongfei Zao, University Center for Social and Urban Research, University of Pittsburgh

A special thanks to the Altoona Water Authority, Blair County Conservation District, City of Altoona (Department of Public Works), Blair County Department of Solid Waste & Recycling, PA CleanWays of Blair County, PA DEP Altoona District Office, and Blair County municipalities for their assistance on this report.

Thanks to the rest of the PA CleanWays – Keep Pennsylvania Beautiful staff for their various contributions of report design, data management, and editing.

This report was produced with funding through:

A grant from the Department of Environmental Protection



PA CleanWays – Keep Pennsylvania Beautiful

105 West Fourth Street, Greensburg, PA 15601

Phone: 724-836-4121 • Toll Free: 877-772-3673

Fax: 724-836-1980 • www.pacleanways.org