
PA CleanWays Illegal Dump Survey Final Report

ALLEGHENY COUNTY 2005



Empowering people to eliminate
illegal dumping and littering in Pennsylvania.

© Copyright 2005 PA CleanWays



**Empowering people to eliminate
illegal dumping and littering in Pennsylvania.**

Since 1990, PA CleanWays has been dedicated to empowering people to eliminate illegal dumping and littering. Through the coordinated efforts of nearly 20,000 PA CleanWays cleanup volunteers, 7,861 tons of trash and over 77,000 tires have been removed from illegal dumpsites in Pennsylvania and properly disposed. Through special collection events sponsored by PA CleanWays chapters and affiliates, an additional 218,000 tires and 20,000 appliances have been properly disposed. These are waste materials that might otherwise have been dumped illegally. Our experience indicates that local involvement, partnerships and support are vital to lasting success in addressing illegal dumping and littering.

PA CleanWays

105 West Fourth Street, Greensburg, PA 15601

Phone: 724-836-4121 • Fax: 724-836-1980

www.pacleanways.org

EXECUTIVE SUMMARY

PA CleanWays is a non-profit organization that empowers people to eliminate illegal dumping and littering in Pennsylvania through various education and environmental programs. PA CleanWays' illegal dump surveys educate state, county and local officials about the problem of illegal dumping and provide valuable data about the dumpsites and the community in which they reside to address the problem through cleanups, municipal waste collections, and recycling programs.

Illegal dumpsite identification was completed by driving roads and contacting various constituent groups such as municipal offices and community services, state agencies, and environmental and conservation groups in the area. Limitations of the survey process include poor visibility in high growth areas, and surveyors not accessing private lands, or high crime/high risk areas. Due to these limitations, it is likely that there are additional dumpsites not accounted for in this report.

Currently, PA CleanWays of Allegheny County is conducting a separate illegal dumpsite survey of the City of Pittsburgh. Therefore, for the purpose of this report the City of Pittsburgh was not included in the survey area.

There were 202 dumpsites identified, containing 344.08 tons of trash. Ninety percent of the sites were determined to be active, and 15% of the sites were located in a rural area.

In Allegheny County, of 130 municipalities, all municipalities had mandatory trash collection. Eighty-one municipalities have a curbside recycling program within their community; of those, 60 are mandated programs.

Fifty-seven percent of the surveyed sites were in the vicinity of some sort of waterway or body of water, while 24% had waste materials directly in the waterway itself. Hard-to-dispose of items were the most common waste type in the identified dumpsites.

TABLE OF CONTENTS

EXECUTIVE SUMMARY	1
BACKGROUND	3
PURPOSE OF ILLEGAL DUMP SURVEYS	3
IMPACTS OF ILLEGAL DUMPING.....	3
SURVEY METHOD.....	4
DEFINITION OF AN ILLEGAL DUMPSITE.....	4
SITE IDENTIFICATION AND ASSESSMENT.....	5
LIMITATIONS	5
ALLEGHENY COUNTY ILLEGAL DUMPSITE SURVEY AREA AND RESULTS.....	6
SURVEY AREA.....	6
SITE CHARACTERISTICS.....	6
IMPACTS ON WATERWAYS	7
WASTE CHARACTERISTICS	7
POSSIBLE CAUSES AND SOLUTIONS	7
POSSIBLE CAUSES.....	7
POSSIBLE SOLUTIONS.....	8
SUMMARY	9
ATTACHMENTS	
#1 Allegheny County Illegal Dumpsites and Municipalities Map	
#2 Allegheny County Illegal Dumpsites and Population Density Map	
#3 Allegheny County Illegal Dumpsites and Environmental Features Map	
#4 Illegal Dumpsite Survey Site Characteristics by Municipality	
#5 Illegal Dumpsite Survey Site Summary Chart by County	
#6 Illegal Dumpsite Survey Waste Characteristics by Municipality	

BACKGROUND

PA CleanWays is a nonprofit organization that empowers people to eliminate illegal dumping and littering in Pennsylvania. Since 1990, PA CleanWays has helped people who are ready to take action against these destructive problems. By partnering with county and local officials, concerned residents, and community organizations, tangible results can be seen within a community through the:

- organization of illegal dump and litter cleanups,
- adoption of local areas,
- prevention of future dumping by the watchful eyes of volunteer monitors,
- placing of physical deterrents, and
- enforcement action if needed.

PA CleanWays educates the public about proper waste disposal, recycling and practical alternatives to dumping and littering through the dissemination of literature, presentations, and coordination of collection events for hard-to-dispose of items.

PURPOSE OF ILLEGAL DUMP SURVEYS

The purpose of the illegal dump survey was to assess and document as many illegal dumpsites as possible within the county. Illegal dumping mostly occurs in remote and secluded places, rural areas where few persons live and the roads are less traveled. However, for many people who are residents of an urban area, an illegal dump is within a one-mile radius of their home. Illegal dumping, within an urban context, has its own set of unique characteristics. Overall, very few people are aware of the widespread problem of illegal dumping.

The first step in developing an action plan against illegal dumping in a community is to determine the extent of the illegal dumping problem. Once sites are identified, assessed, and mapped, the data gathered can be used to:

- show that a problem does indeed exist,
- prioritize the sites and areas for cleanup and abatement,
- document problem materials within the dumpsites and develop plans for proper disposal, and
- provide a benchmark to measure cleanup progress.

The survey is also a tool that can be used for planning purposes within the community. It can provide valuable insight into development of solid waste and recycling programs. It can be used to gain support for funding for public awareness programs and education, as well as generate funds to clean the existing dumpsites.

IMPACTS OF ILLEGAL DUMPING

Illegal dumping poses a direct threat to the health and safety of humans and animals. Illegal dumping attracts disease spreading rodents and mosquitoes by giving them a place to live and breed. West Nile Virus, carried by mosquitoes, has been a primary concern for environmental officials. Illegal dumps also can be a source of physical injury for humans and animals due to broken glass, rusty metals, and toxic substances.

Recently a new threat has been added to illegal dumping. Methamphetamine labs, used to produce the illegal drug crystal meth, are becoming more and more common. The materials used to make the illegal drug are tossed along the roadsides in illegal dumps and are extremely toxic.

Environmentally, illegal dumping pollutes our soil, surface and groundwater supplies, as well as the air we breathe if a site catches on fire. The emissions released by the burning plastics and household hazardous waste can be extremely toxic. It is also aesthetically unpleasing, ruining the beauty of natural areas, including many public places such as community parks and state forests, parks and game lands.

Economically, illegal dumps are expensive to clean up. Government agencies spend millions annually on cleanup efforts. The estimated cost to clean up a site can be anywhere from \$600 to over \$1000 per ton for clean up and removal.¹

Illegal dumpsites can also impact property values and are a liability for property owners and property purchases and transfers. Tourism revenue can also be affected by illegal dumps projecting to tourists that trash is not a concern of the community or the persons living there.

Illegal dumping also has social impacts to an area. When illegal dumping in neighborhoods and communities becomes status quo, quality of life is impacted and low-level property crime often increases.² This is what is referred to as the “broken window theory” developed originally by James Q. Wilson and George Kelling. The “broken window theory” suggests that neighborhood strategies help to deter and reduce crime by the fast clean up of illegally dumped items, litter and spilled garbage, and by the prompt removal of disposed of items.³

SURVEY METHOD

Definition of an Illegal Dumpsite

One of the primary goals of an illegal dump survey is to ultimately address the trash in our communities; therefore, the following were considered illegal dumpsites and included in the survey:

- Areas of concentrated trash
- Areas of scattered trash that:
 - Are not considered roadside litter (bottles, fast food wrappers, cans, etc.)
 - Appear to have new trash thrown on them occasionally (more than twice a year)
 - Appear to have new trash thrown on them occasionally, but cleanup maintenance is prevalent to prevent accumulation

¹PA CleanWays averaged cost from multiple cleanups throughout 2004 & 2005.

² Keep America Beautiful National Conference, December 2004

³ Henry G. Cisneros, “Defensible Space: Deterring Crime and Building Community”, January 1995

- Areas containing only piles of yard waste (grass, leaves, branches, trees, etc.) These sites can often attract the dumping of other materials and can grow into major dumpsites.
- Areas containing isolated or solitary items that may or may not be dumped on in the future

For the purpose of this report, significant tire piles were not considered illegal dumpsites. The Department of Environmental Protection Southwest Region office has identified and surveyed significant tire piles. They have compiled a separate report identifying these sites throughout the county. Many of these sites contain over 10,000 tires. This information is available through DEP.

Site Identification and Assessment

PA CleanWays has learned through our experiences to effectively identify illegal dumpsites in an area, it is necessary to physically travel the roadways. By focusing on high probability areas for dump locations such as pull-offs, roads with hills, etc., efficient surveying can be done on large areas within a short amount of time.

Preliminary data gathering was conducted by sending a letter to every municipality within the county concerning the survey project. The letters detailed the survey purpose and plan and asked for known illegal dumpsites to be reported back to us. Letters were also sent to all groups that were familiar with the roadways such as the police, fire, ambulance, and maintenance crews, as well as environmental groups interested in conservation of this area, and state agencies such as the Department of Environmental Protection, Department of Conservation and Natural Resources, the Pennsylvania Game Commission, and the Pennsylvania Fish and Boat Commission. Follow up phone calls were made to each municipality prior to beginning assessments in their area.

Once an illegal dumpsite was located, characteristics about the site itself were recorded and documented on standard forms. A copy of the Illegal Dump Survey Assessment Form and Instruction Sheet are available by contacting PA CleanWays. In some cases, pictures were also taken of the illegal dumpsites to further document the problem. GPS coordinates were recorded for each site in order to produce illegal dumpsite maps within the county based on municipalities, population density and environmental features. (See Attachments 1,2,3)

Limitations

The primary limitation with road surveys is that they only yield sites visible from the public right of way, thus they were the only ones assessed by PA CleanWays. PA CleanWays did not enter private property to assess sites. It can be presumed that there are significant numbers of illegal dumpsites out of sight on private property with limited access. Because safety considerations were a priority for this project, areas were not assessed in high crime/risk areas. Most surveying began after the foliage had thinned in the fall and visibility improved, however some site assessments were limited due to high vegetation.

ALLEGHENY COUNTY ILLEGAL DUMPSITE SURVEY AREA AND RESULTS

Survey Area

Currently, PA CleanWays of Allegheny County is conducting a separate illegal dumpsite survey of the City of Pittsburgh. Therefore, for the purpose of this report the City of Pittsburgh was not included in the survey area. This information is available through PA CleanWays of Allegheny County.

Allegheny County encompasses 730.2 square miles and is located in the southwestern part of Pennsylvania. The county is bordered by Westmoreland, Washington, Beaver, and Butler counties. The county is comprised of 130 municipalities including the City of Pittsburgh. The county has two major watersheds within its boundaries, Chartiers Creek Watershed and Monongahela River Watershed.

According to the Census Bureau, the 2000 census recorded the population, less the City of Pittsburgh, to be 947,103. The median household income for all of Allegheny County is \$38,329. The per capita income for all of Allegheny County is \$22,491. Eleven percent of individuals are below poverty status, while 7.9% of families are below poverty status. Both are equal to the state average of 11% for individuals and 7.8% for families. The percent of high school graduates or higher is 86.3%, which is higher than the state average of 81.9%.

Once labeled as the “Steel Capital of the World”, Allegheny County is emerging through those smoky skies as a county with new technology, medicine, art and tourism and a bright future ahead. Earning the distinguished honor “Best City View” by Tradeshow Week, the David L. Lawrence Convention Center debuted in 2003 as the first convention center to meet green building specifications. The U.S. Green Building Council sites Allegheny County as having a region with the largest concentration of green buildings in the country.

In Pennsylvania, municipal solid waste (msw) includes municipal waste, sewage sludge, construction and demolition waste, asbestos, and ash. In Allegheny County, 130 municipalities were noted as requiring trash collection, while 81 municipalities have a curbside recycling program within their community. In 2003, according to the Department of Environmental Protection, Allegheny County reported a total of 996,781.41 tons of municipal solid waste generated. Of that total, 129,997.17 tons were recycled giving Allegheny County a 13% recycling rate. The county has a msw generation rate of .85 tons per person per year. The national average is .8 tons per person per year.

Site Characteristics

Allegheny County surveys resulted in the identification of 202 illegal dumps sites totaling more than 344.08 tons of trash. Most sites were small sites with less than 5 tons of trash. The sites ranged in size from approximately .5 tons to 20 tons of waste. A chart of Site Characteristics by Municipality can be found as Attachment 4.

Of the 202 dump sites, 15% were in rural areas, 15% in urban areas, and 70% in suburban areas. Most of the terrain of Allegheny County is relatively hilly. Sloped hillsides provide illegal dumpers with a convenient place for easy unloading.

All of the sites were determined by their contents to be either active or inactive. Of the 202 sites, 90% were considered to be a continuous problem where dumping occurs routinely. Only 13 sites (6%) had “No Dumping” signs present and 12 of those 13 sites were active. Signs, although effective in some areas, often send a message that this is a “safe” place to dump. In other county surveys, the presence of signs resulted in the identification of sites that were not visible from the road. Concerning visibility, 89% of the sites were visible or partly visible from the road. This fact lends itself to the theory that illegally dumped trash will attract more trash. An Illegal Dumpsite Characteristics Summary Chart by County can be found as Attachment 5.

Impacts on Waterways

The impacts of illegal dumping on wetlands and waterways in Allegheny County are significant. Of all the illegal dumpsites, those posing the most direct and obvious threat to the environment were those located in or near waterways. Fifty-seven percent of the surveyed sites were in the vicinity of some sort of waterway or body of water. Forty-eight of those sites had waste materials directly in the waterway itself. (See Attachment 4) It should, however, be noted that all illegal dumps contaminate our water supply.

Waste Characteristics

Allegheny County illegal dumpsites contained a variety of waste types. In some areas, the common presence of a waste type may indicate the need for a refuse/recycling program for that particular material. Although there was a variety of refuse found in the illegal dumps, the most prevalent were hard-to-dispose of materials such as tires, appliances, and other bulky waste items. Recyclables were also commonly found while surveying. Recyclables are defined as steel, bi-metallic and aluminum cans, glass, plastic bottles, newspaper, magazines, and cardboard. These were usually mixed with other materials. A chart of the Waste Characteristics by Municipality can be found as Attachment 6.

POSSIBLE CAUSES AND SOLUTIONS

Illegal dumping occurs in every county of the state. There are a multitude of reasons and excuses why people dump: the cost or inconvenience of proper disposal; the lack of, or frustration in finding proper disposal options; lack of public education; profit making; the result of other criminal activity or malicious mischief.

Possible Causes

- Municipal curbside trash collection is unavailable.
Because it is not mandated by the state, trash collection options are dependent on the city or municipal government. Communities that depend on private subscription for waste collection services have reported greater dumping problems. Inherent inefficiencies and associated higher costs exist in almost all private subscription systems because trucks must travel long distances between customers.⁴
- Recycling programs are unavailable or inconvenient.

⁴ PA CleanWays and PROP, “Factors Influencing Illegal Dumping in Pennsylvania Communities”, Spring 2001

Act 101 dictates that all communities over 10,000 and densely populated municipalities between 5,000 and 10,000 have recycling programs. Curbside recycling communities have reported a lower incidence of residential waste accumulation problems and a slightly lower incidence of dumping problems.⁵

- **Disposal of Construction and Demolition Debris (C&D)**
C&D debris is a serious solid waste management issue because of the amount that is generated each year. C&D debris is often found in illegal dumps and creates a compounded problem in that some of the materials may be hazardous, such as wood chemically treated or painted with lead based paint, asbestos containing insulation or shingles.
- **Shortage of Enforcement**
Unfortunately, many communities cannot devote people and resources to effectively deal with illegal dumping. As a result, dumpers do not fear prosecution, thus have no reason to stop their habits.
- **Education**
Many people have been dumping all their lives and don't see it as a problem, nor do they see the harm in it. Not long ago, everyone trashed the environment, using open town dumps, burning or burying trash, or dumping it out of sight. It was an acceptable practice. Today we know the harmful effects, but a few people still refuse to change or believe their "little bit of trash" won't hurt.
- **Minimal Funding Opportunities**
Funds are needed to organize cleanups, educate the public, enforce regulations, and other associated project costs. Because of limited funding for clean-ups and abatement activities, these kind of events can be difficult to coordinate.

Possible Solutions

- **Organize a cleanup**
Cleanups are an effective way to combat littering and illegal dumping. Cleanups help to build ownership, restore community pride and send a message that dumping will no longer be tolerated.
- **Organize a special collection event**
Special one-day collection events are worthwhile. These special collection opportunities are very effective when routinely offered, such as each spring or fall as a community cleanup day, but are also successful when offered as community resources permit. These special collections commonly target hard-to-dispose of materials such as tires, appliances, scrap metal, computers, electronics, and household hazardous waste. Most of these items account for what is found in illegal dumps.

⁵ PA CleanWays and PROP, "Factors Influencing Illegal Dumping in Pennsylvania Communities", Spring 2001

- Physical Deterrents

The placing of guard rails or mounds of dirt at pull-off areas, as well as the planting of trees can help provide a barrier that will limit accessibility to a site for future dumping.

- Site monitoring and maintenance

It is important to monitor a site after an area has been cleaned in order to watch for subsequent dumping or littering, keep the site clean, and to report any incriminating evidence to the proper enforcement agency. Keeping the site clean makes it easier to spot new trash and discourages subsequent dumping, since trash attracts trash.

Enforcement, with monitor support, effectively decreases the incidents of dumping and littering. When word gets out that dumping activity will not be tolerated and violators will be caught and prosecuted, dumping decreases.

- Community education

Intentional illegal dumping and littering are social problems that require a shift in attitudes and practices. Education is the key to changing values, habits, and attitudes. Education programs should be tailored to inform the community and can take many forms such as: school/community presentations, press releases, radio and newspaper ads, and publications.

- Enforcement of existing laws

Any improper disposal of trash is illegal and violators can be prosecuted. Numerous Pennsylvania agencies enforce laws addressing improper disposal of trash. The Pennsylvania General Assembly created and enacted our littering and dumping laws.⁶ County and municipal governments create and enact ordinances that are specific within their local boundaries.

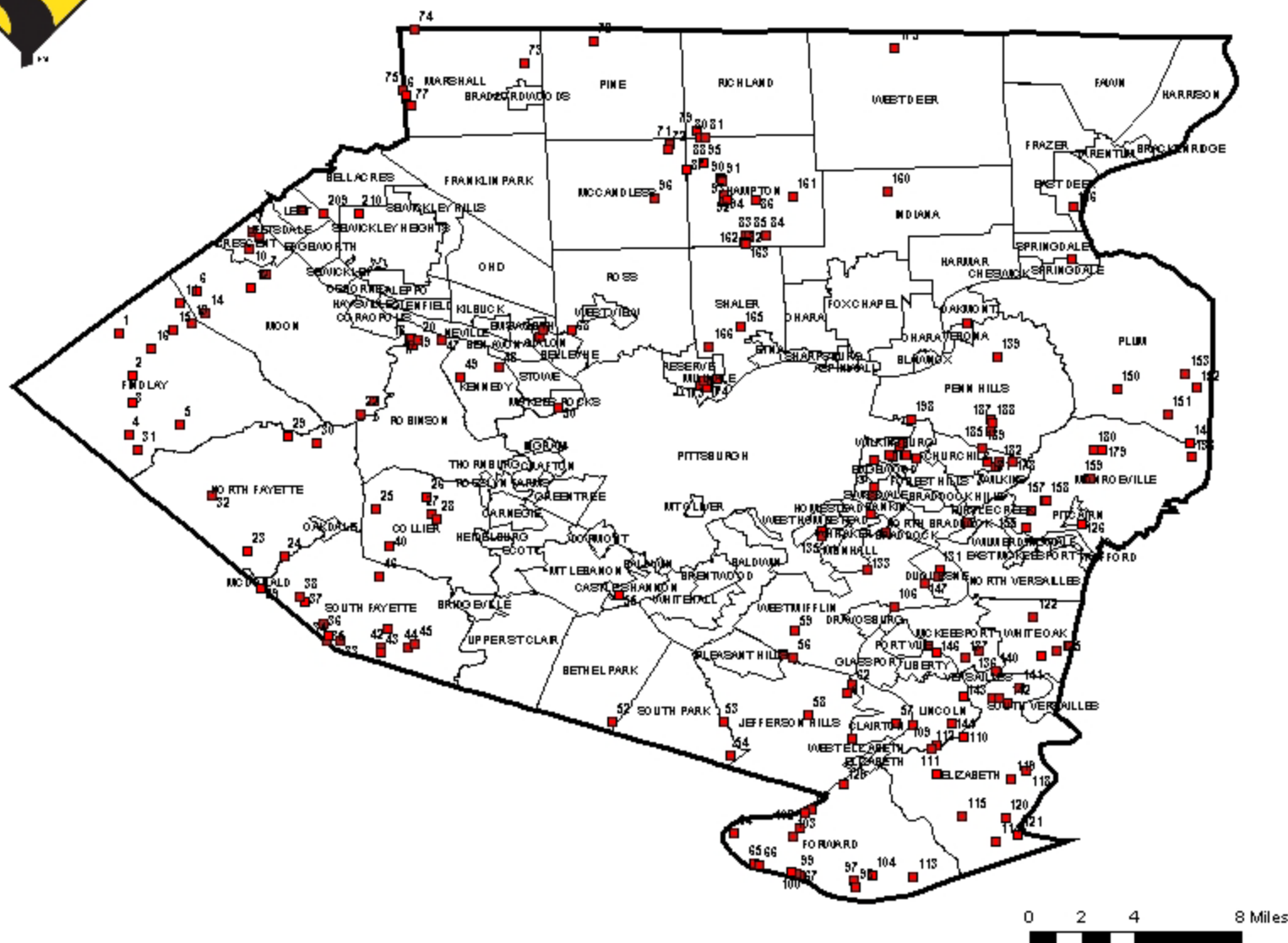
SUMMARY

This survey accounted for 202 illegal dump sites in Allegheny County consisting of 344.08 tons of trash. This is not a comprehensive survey of the entire county as it is expected that there are many more illegal dumpsites on private lands, as well as ones on public lands that have gone undetected. The City of Pittsburgh was omitted from the survey area as a separate illegal dump survey is currently being conducted in the City of Pittsburgh. However, the documentation and assessment of these 202 sites in Allegheny County are a strong step forward in the fight against illegal dumping in Pennsylvania. By providing the needed data to address the problem of illegal dumping, constituents can begin addressing the problem through public policy, resource allocation, community education and cleanups.

⁶ Read about the Pennsylvania Code at www.pacode.com



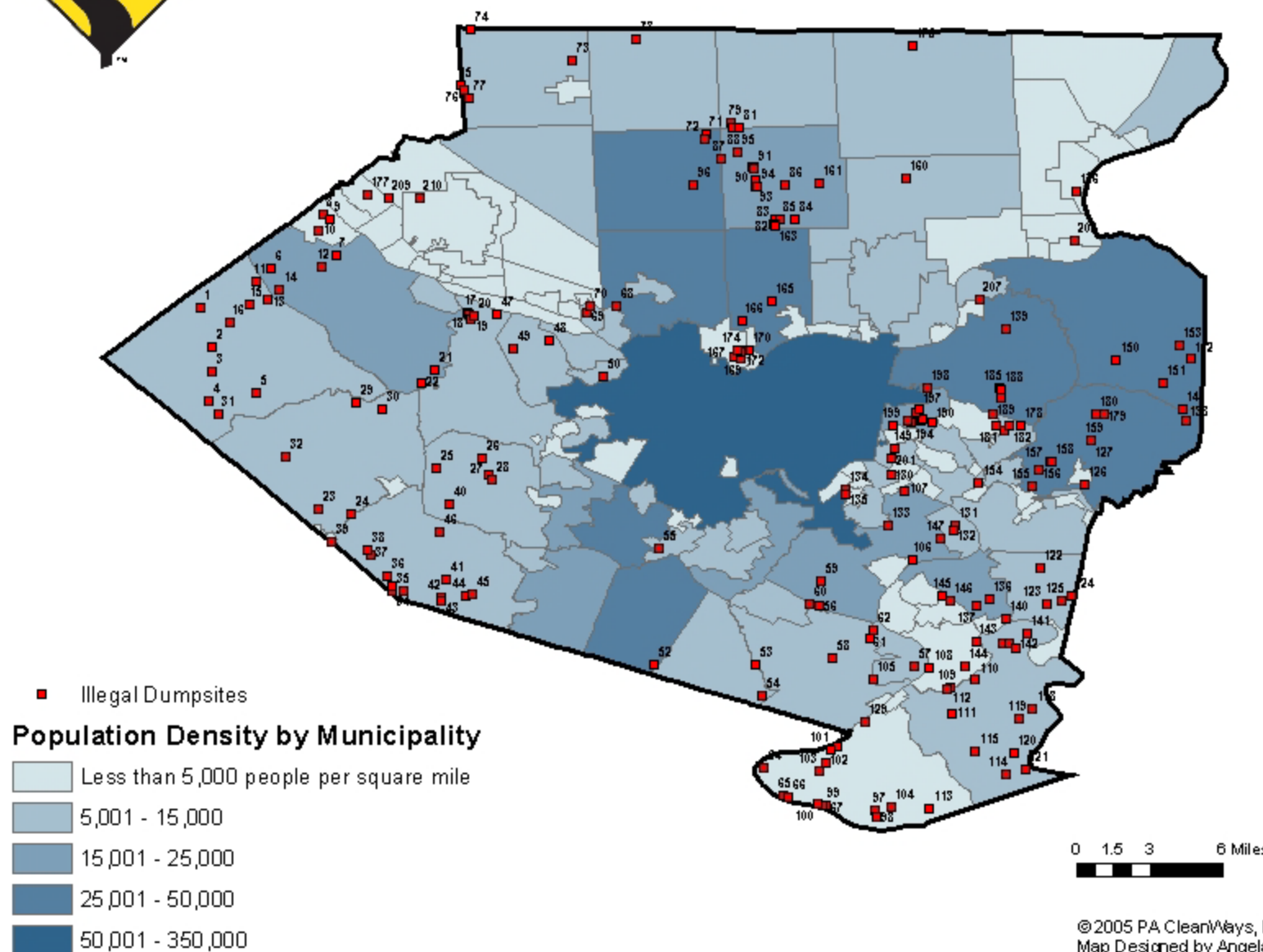
Allegheny County, Pennsylvania Illegal Dumpsites and Municipalities March 2005



■ Illegal Dumpsites

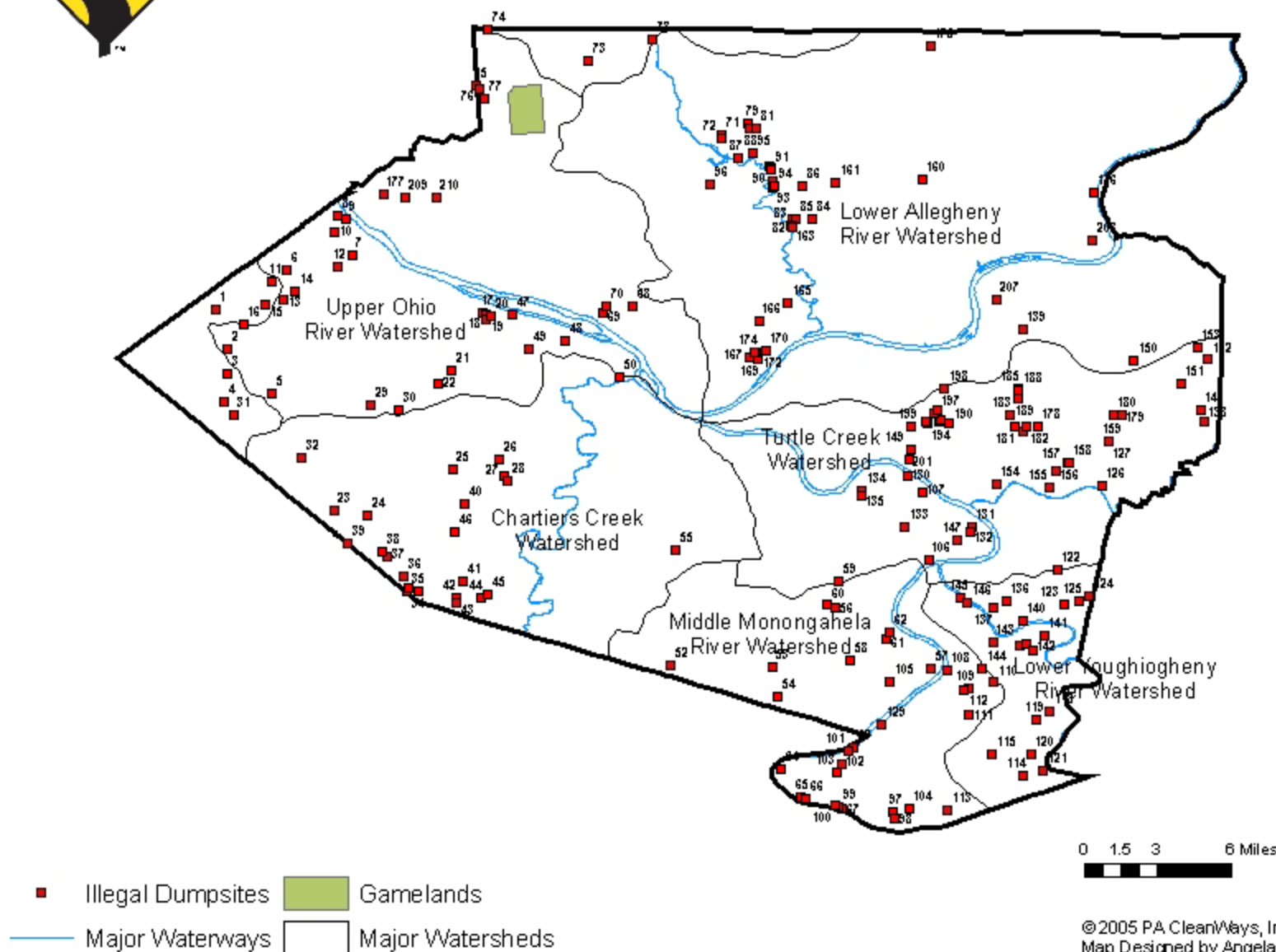


Allegheny County, Pennsylvania Illegal Dumpsites and Population Density March 2005





Allegheny County, Pennsylvania Illegal Dumpsites and Environmental Features March 2005



Allegheny County Illegal Dump Survey Site Characteristics by Municipality*

Municipality	Site Name	Site Number	Calculated Tons	Demographics	Distance From Waterway	Visibility From Roadway	Road Type	Terrain	Active?
Avalon	Spruce Run & Frederick	0069	.5	Suburban	Within 50 feet	No	Undetermined	Steep Slope	Yes
Avalon	Norwood & City View	0070	1	Suburban	No Waterway Nearby	Partial	Undetermined	Steep Slope	Yes
Bell Acres	Sevin Road	0209	.5	Suburban	Within 50 feet	Yes	Municipal Road	Steep Slope	Yes
Bellevue	Klemont Ave	0068	1.5	Suburban	No Waterway Nearby	No	Municipal Road	Steep Slope	Yes
Bethel Park	Library Road (88 South) / Clifton	0052	5	Urban	In Waterway/Wetlands	Yes	State Road	Flat	Yes
Borough of Millvale	Alfred Street	0167	1	Suburban	No Waterway Nearby	Partial	Municipal Road	Flat	Yes
Borough of Millvale	Martle Avenue	0168	2	Suburban	No Waterway Nearby	No	Municipal Road	Gently Sloped	Yes
Clairton	837 South	0057	2	Urban	No Waterway Nearby	Yes	State Road	Flat	Yes
Clairton	Ridge / Desiderio (2028)	0105	1.5	Suburban	No Waterway Nearby	Yes	State Road	Flat	Yes
Collier	Baldwin	0025	2	Rural	In Waterway/Wetlands	Partial	State Road	Steep Slope	Yes
Collier	Scotts Run Road Site 1	0026	2.5	Suburban	In Waterway/Wetlands	Partial	Municipal Road	Medium Slope	Yes
Collier	Scotts Run Road Site 2	0027	1.5	Suburban	In Waterway/Wetlands	Partial	Municipal Road	Gently Sloped	Yes
Collier	Scotts Run Road Site 3	0028	1.5	Suburban	In Waterway/Wetlands	Partial	Municipal Road	Gently Sloped	Yes
Collier	County Road	0040	1.5	Suburban	No Waterway Nearby	Yes	Municipal Road	Flat	Yes
Crescent	Intersection of Backtown Rd/Rarine	0008	1	Suburban	In Waterway/Wetlands	Partial	State Road	Gently Sloped	Yes
Crescent	Intersection of Crescent Blvd /	0009	.25	Urban	No Waterway Nearby	Yes	Municipal Road	Gently Sloped	No
Crescent	Spring Run Road	0010	2	Suburban	Within 50 feet	Yes	Municipal Road	Gently Sloped	Yes
Dravosburg	837N	0106	1	Suburban	Within 50 feet	Yes	State Road	Flat	Yes
Dravosburg / Pleasant	Lewis Run Road	0060	10	Suburban	Within 50 feet	Yes	State Road	Flat	Yes
Duquesne	3rd Street	0131	3.5	Urban	No Waterway Nearby	Yes	Municipal Road	Flat	Yes
Duquesne	Hamilton Street	0132	2	Urban	No Waterway Nearby	Yes	Municipal Road	Flat	Yes
Duquesne	Homestead Duquesne Road	0147	4	Urban	No Waterway Nearby	Yes	State Road	Flat	Yes
East Deer Township	Second Street	0176	.5	Rural	More than 100 feet	No	Municipal Road	Gently Sloped	Yes
Elizabeth	2010	0109	3.5	Suburban	In Waterway/Wetlands	Yes	State Road	Flat	Yes
Elizabeth	2010 / 48 Junction	0110	1	Suburban	In Waterway/Wetlands	Yes	State Road	Flat	Yes
Elizabeth	48 South	0111	1.5	Suburban	More than 100 feet	Yes	State Road	Flat	Yes

*Characteristics assessed at time of survey were estimates based on what was visible.

Allegheny County Illegal Dump Survey Site Characteristics by Municipality*

Municipality	Site Name	Site Number	Calculated Tons	Demographics	Distance From Waterway	Visibility From Roadway	Road Type	Terrain	Active?
Elizabeth	Mill Hill	0112	.5	Suburban	In Waterway/Wetlands	Yes	State Road	Flat	Yes
Elizabeth	Long Hollow Road	0114	.5	Suburban	Within 50 feet	Partial	State Road	Steep Slope	Yes
Elizabeth	Round Hill Road	0115	5	Suburban	In Waterway/Wetlands	Yes	Municipal Road	Steep Slope	Yes
Elizabeth	Renzie Road / Turkeyfoot	0117	.5	Suburban	No Waterway Nearby	Partial	State Road	Steep Slope	Yes
Elizabeth	Boyd's Hollow Road	0118	1	Suburban	Within 50 feet	Partial	Municipal Road	Steep Slope	Yes
Elizabeth	Patterson Road	0119	1.5	Suburban	In Waterway/Wetlands	Yes	Municipal Road	Steep Slope	Yes
Elizabeth	Pine View	0120	.5	Suburban	In Waterway/Wetlands	Yes	State Road	Flat	No
Elizabeth	Forest Hill Road	0121	2	Suburban	In Waterway/Wetlands	Yes	Municipal Road	Gently Sloped	Yes
Elizabeth	Greenock/Wexford Ave	0141	2.5	Urban	No Waterway Nearby	Yes	Municipal Road	Flat	Yes
Elizabeth	Greenock	0142	.5	Urban	No Waterway Nearby	Yes	Municipal Road	Gently Sloped	Yes
Elizabeth	West Smithfield (2018)	0143	2	Suburban	In Waterway/Wetlands	Yes	State Road	Flat	Yes
Elizabeth / Boston	Renzie Road	0116	1	Suburban	No Waterway Nearby	Partial	State Road	Medium Slope	Yes
Findlay	Camp Meeting Road	0001	.5	Suburban	No Waterway Nearby	Yes	Municipal Road	Gently Sloped	Yes
Findlay	Point Park Road	0003	1	Suburban	No Waterway Nearby	Partial	Municipal Road	Gently Sloped	Yes
Findlay	Washington Road	0002	1	Suburban	Within 50 feet	Partial	State Road	Gently Sloped	Yes
Findlay	Robinson Road	0005	5	Suburban	Within 50 feet	Yes	Municipal Road	Flat	Yes
Findlay	Potato Garden / Burgettstown Road	0004	1	Suburban	In Waterway/Wetlands	Yes	Municipal Road	Gently Sloped	Yes
Findlay	Spring Run Road Ext	0011	2.5	Suburban	No Waterway Nearby	Yes	Municipal Road	Flat	No
Findlay	Moon Clinton Road Site 1	0015	6	Suburban	In Waterway/Wetlands	Yes	State Road	Flat	No
Findlay	Moon Clinton Road Site 2	0016	.5	Suburban	No Waterway Nearby	Yes	State Road	Flat	Yes
Findlay	Potato Garden Road	0031	4	Rural	Within 50 feet	Yes	State Road	Flat	Yes
Findlay/Moon	Boundary / close to Clinton	0013	1.5	Suburban	No Waterway Nearby	Yes	Municipal Road	Flat	Yes
Forward	2001 / Bunola River Blvd Site 1	0063	.5	Rural	Within 50 feet	Yes	State Road	Flat	Yes
Forward	2001 / Bunola River Blvd. Site 2	0064	.5	Suburban	No Waterway Nearby	Yes	State Road	Flat	Yes
Forward	2001 / Bunola River Blvd Site 3	0065	6	Rural	Within 50 feet	Yes	State Road	Gently Sloped	Yes
Forward	2001/Bunola River Blvd Site 4	0066	.5	Rural	50 - 100 feet	Yes	State Road	Flat	Yes
Forward	2001 / Elkhorn Road	0067	3	Suburban	Within 50 feet	Yes	State Road	Medium Slope	Yes
Forward	Rostosky Ridge Road	0097	1	Rural	No Waterway Nearby	Yes	Municipal Road	Flat	Yes

Allegheny County Illegal Dump Survey Site Characteristics by Municipality*

Municipality	Site Name	Site Number	Calculated Tons	Demographics	Distance From Waterway	Visibility From Roadway	Road Type	Terrain	Active?
Forward	Unknown	0098	.5	Rural	No Waterway Nearby	Partial	Municipal Road	Steep Slope	Yes
Forward	Elkhorn Road Site 1	0099	1	Suburban	Within 50 feet	No	State Road	Medium Slope	Yes
Forward	Elkhorn Road Site 2	0100	5	Suburban	Within 50 feet	No	State Road	Steep Slope	Yes
Forward	Raccoon Run Road / Bunola Blvd	0101	.5	Suburban	Within 50 feet	Yes	State Road	Flat	Yes
Forward	Raccoon Run Road Site 1	0102	.1	Suburban	In Waterway/Wetlands	Partial	State Road	Gently Sloped	Yes
Forward	Raccoon Run Road Site 2	0103	.5	Rural	50 - 100 feet	Yes	State Road	Flat	No
Forward	Sunny Side	0104	1	Suburban	In Waterway/Wetlands	Yes	State Road	Gently Sloped	Yes
Forward	Kelly Hollow	0113	1	Suburban	In Waterway/Wetlands	Yes	Municipal Road	Flat	Yes
Forward	Elkhorn Road Site 3	0129	.5	Suburban	In Waterway/Wetlands	Yes	State Road	Flat	Yes
Glassport / Lincoln	Elizabeth Road (2001)	0108	2.5	Suburban	Within 50 feet	Yes	State Road	Flat	Yes
Hampton	Montour Road Site 1	0079	.125	Rural	More than 100 feet	Yes	Municipal Road	Flat	Yes
Hampton	Montour Road Site 2	0080	1	Rural	More than 100 feet	Yes	Undetermined	Flat	Yes
Hampton	Wildwood Road Site 1	0081	.1	Rural	Within 50 feet	Yes	Municipal Road	Gently Sloped	Yes
Hampton	Felicity Ave	0082	.5	Suburban	More than 100 feet	Partial	Undetermined	Steep Slope	Yes
Hampton	Allison Park RR House on Route 8	0083	2.5	Urban	In Waterway/Wetlands	Yes	Undetermined	Flat	Yes
Hampton	East Elfinwild near Balsam Dr	0084	.5	Suburban	No Waterway Nearby	Partial	Undetermined	Flat	Yes
Hampton	Route 8 Site 1	0085	2.5	Suburban	In Waterway/Wetlands	Yes	County Road	Medium Slope	Yes
Hampton	McCully Road	0086	.5	Suburban	Within 50 feet	Partial	Undetermined	Flat	Yes
Hampton	Wildwood Road Site 3	0088	2	Suburban	In Waterway/Wetlands	Yes	County Road	Gently Sloped	No
Hampton	Wildwood Sample Road Site 1	0089	.25	Suburban	In Waterway/Wetlands	No	County Road	Extremely Steep	Yes
Hampton	Wildwood Sample Road Site 2	0090	.5	Suburban	More than 100 feet	No	Municipal Road	Flat	Yes
Hampton	Wildwood Sample Road Site 3	0091	.5	Suburban	More than 100 feet	Partial	Municipal Road	Flat	Yes
Hampton	Wildwood Sample Road Site 4	0092	.25	Suburban	More than 100 feet	Yes	County Road	Medium Slope	Yes
Hampton	Wildwood Sample Road Site 5	0093	.5	Suburban	Within 50 feet	Yes	Private Road	Flat	No
Hampton	Royal View & Sample Road	0094	.25	Suburban	Within 50 feet	Partial	County Road	Flat	Yes
Hampton	Wildwood & Hardt Road	0095	.25	Suburban	Within 50 feet	Partial	County Road	Gently Sloped	Yes
Hampton	Harts Run and Middle Road	0161	1	Suburban	No Waterway Nearby	Yes	Municipal Road	Flat	Yes
Hampton	Route 8 Site 2	0162	1	Urban	More than 100 feet	Yes	State Road	Flat	No

Allegheny County Illegal Dump Survey Site Characteristics by Municipality*

Municipality	Site Name	Site Number	Calculated Tons	Demographics	Distance From Waterway	Visibility From Roadway	Road Type	Terrain	Active?
Hampton	Route 8 Site 3	0163	1.5	Urban	Within 50 feet	No	County Road	Flat	No
Homestead	Basic Ave.	0134	1	Suburban	In Waterway/Wetlands	Yes	Municipal Road	Medium Slope	Yes
Indiana / Hampton	Shaffer Road near Cedar Run Road	0160	.5	Suburban	50 - 100 feet	Yes	Municipal Road	Flat	Yes
Jefferson Hills	88 South/Spartz	0056	2	Urban	No Waterway Nearby	Yes	State Road	Steep Slope	Yes
Jefferson Hills	Old Clairton	0058	1.5	Suburban	In Waterway/Wetlands	Yes	Municipal Road	Medium Slope	Yes
Jefferson Hills	Wall Road Site 1	0061	2	Suburban	Within 50 feet	Yes	State Road	Flat	Yes
Jefferson Hills	Wall Road Site 2	0062	4	Suburban	No Waterway Nearby	Yes	State Road	Flat	Yes
Kennedy	Ewing Road	0048	.5	Urban	No Waterway Nearby	No	State Road	Gently Sloped	Yes
Kennedy	Forest Grove	0049		Suburban	Within 50 feet	Yes	Municipal Road	Medium Slope	Yes
Leet Township	Spencer Lane	0177	1	Rural	No Waterway Nearby	No	Municipal Road	Flat	Yes
Liberty	River Rd. (2027)	0145	2	Suburban	More than 100 feet	Yes	State Road	Flat	Yes
Liberty	River Road	0146	1	Suburban	More than 100 feet	Yes	State Road	Gently Sloped	Yes
Lincoln	Liberty Way	0144	2.5	Suburban	In Waterway/Wetlands	Yes	State Road	Flat	Yes
Marshall	Wildflower Lane	0073	6	Suburban	No Waterway Nearby	Yes	Undetermined	Flat	Yes
Marshall	Woodland Road	0074	2	Suburban	No Waterway Nearby	Yes	Undetermined	Flat	Yes
Marshall	Cliff Run Site 2	0075	1	Rural	Within 50 feet	Partial	Undetermined	Flat	Yes
Marshall	Cliff Run Site 1	0076	1.5	Rural	No Waterway Nearby	Yes		Extremely Steep	Yes
Marshall	Warrendale Bane	0077	1.5	Rural	No Waterway Nearby	Partial	Undetermined	Gently Sloped	Yes
McCandless	Irwin Road Site 1	0071	.25	Rural	More than 100 feet	Partial	Undetermined	Flat	Yes
McCandless	Irwin Road Site 2	0072	3	Rural	Within 50 feet	Yes	Undetermined	Flat	Yes
McCandless	Wildwood Road Site 2	0087	10	Suburban	In Waterway/Wetlands	Yes	Municipal Road	Flat	Yes
McCandless	Babcock Blvd	0096	3	Suburban	50 - 100 feet	Partial	Undetermined	Flat	Yes
McKees Rocks	51 South	0050	5	Urban	Within 50 feet	Yes	State Road	Flat	Yes
McKeesport	Eden Park Road Site 1	0136	1.5	Suburban	In Waterway/Wetlands	Yes	State Road	Flat	Yes
McKeesport	Eden Park Road Site 2	0137	.5	Suburban	No Waterway Nearby	Yes	State Road	Flat	Yes
McKeesport	Center St. (2118)	0140	3	Suburban	No Waterway Nearby	Yes	State Road	Flat	Yes
Millvale	Weible Street - RR Track Area	0164	2.5	Suburban	Within 50 feet	No	Municipal Road	Flat	Yes
Millvale	Willow Lane	0169	1.5	Suburban	Within 50 feet	Yes	Municipal Road	Flat	Yes

Allegheny County Illegal Dump Survey Site Characteristics by Municipality*

Municipality	Site Name	Site Number	Calculated Tons	Demographics	Distance From Waterway	Visibility From Roadway	Road Type	Terrain	Active?
Millvale	Fornoff Lane	0170	1.5	Suburban	No Waterway Nearby	No	Municipal Road	Extremely Steep	Yes
Millvale	Veronica St	0171	3	Suburban	No Waterway Nearby	Partial	Municipal Road	Flat	No
Millvale	Stanton Avenue	0172	1.5	Rural	No Waterway Nearby	No	Municipal Road	Flat	Yes
Millvale	Troy Street	0173	3.5	Suburban	No Waterway Nearby	Partial	Municipal Road	Gently Sloped	Yes
Millvale	Edison Street	0174	1	Suburban	No Waterway Nearby	No	Municipal Road	Flat	Yes
Monroeville	130 E	0126	1	Urban	50 - 100 feet	Partial	State Road	Flat	Yes
Monroeville	Old Frankstown/286 W	0148	.5	Suburban	In Waterway/Wetlands	Partial	State Road	Flat	Yes
Monroeville	286 W	0138	2	Suburban	No Waterway Nearby	Partial	State Road	Medium Slope	Yes
Monroeville	Wilmerding/Monroeville	0155	3	Suburban	No Waterway Nearby	Yes	Municipal Road	Gently Sloped	Yes
Monroeville	Johnston Site 1	0156	1.5	Urban	No Waterway Nearby	Yes	Municipal Road	Gently Sloped	Yes
Monroeville	Johnston Site 2	0157	1.5	Urban	In Waterway/Wetlands	Partial	Undetermined	Medium Slope	Yes
Monroeville	Willow	0158	1	Suburban	No Waterway Nearby	Yes	Municipal Road	Gently Sloped	No
Monroeville	Pitcarin	0159	2.5	Suburban	Within 50 feet	Yes	State Road	Medium Slope	Yes
Monroeville	Sunset Site 1	0179	1	Suburban	No Waterway Nearby	No	Undetermined	Steep Slope	Yes
Monroeville	Sunset Site 2	0180	1	Suburban	No Waterway Nearby	Partial	Municipal Road	Medium Slope	Yes
Monroeville (Pitcairn)	Pitcairn Road	0127	.5	Suburban	In Waterway/Wetlands	Yes	Municipal Road	Flat	Yes
Moon	Flaugherty Road	0006	.5	Suburban	Within 50 feet	Partial	State Road	Flat	Yes
Moon	Flaugherty Road	0007	1	Suburban	In Waterway/Wetlands	Partial	State Road	Gently Sloped	Yes
Moon	3077	0012	.5	Suburban	In Waterway/Wetlands	Yes	State Road	Gently Sloped	Yes
Moon	Becks Run Road	0014	1	Suburban	No Waterway Nearby	Partial	Municipal Road	Gently Sloped	No
Moon	Beaver Grade Road	0021	2.5	Suburban	No Waterway Nearby	Partial	State Road	Steep Slope	Yes
Moon	Hookstown Grade Run / Beaver Road	0022	1	Suburban	Within 50 feet	Yes	State Road	Flat	Yes
Mt Lebanon / Castle	88 South	0055	1.5	Urban	No Waterway Nearby	Partial	State Road	Medium Slope	Yes
N. Fayette	Cliff Mine	0030	.5	Suburban	No Waterway Nearby	Yes	Municipal Road	Flat	Yes
N. Fayette	Kelso Road	0032	.5	Rural	More than 100 feet	Yes	Municipal Road	Flat	No
N. Versailles/White Oak	McKee / Lower Heckman Road	0122	.5	Suburban	Within 50 feet	Partial	State Road	Flat	Yes
N. Versailles/White Oak	McClintock	0123	1	Suburban	No Waterway Nearby	Partial	State Road	Medium Slope	Yes
New Homestead	Niceville Street	0135	.5	Urban	No Waterway Nearby	Partial	Municipal Road	Medium Slope	Yes

Allegheny County Illegal Dump Survey Site Characteristics by Municipality*

Municipality	Site Name	Site Number	Calculated Tons	Demographics	Distance From Waterway	Visibility From Roadway	Road Type	Terrain	Active?
North Fayette	McWreath	0023	10	Rural	In Waterway/Wetlands	Yes	Municipal Road	Gently Sloped	Yes
North Fayette	Short Street	0024	2	Urban	In Waterway/Wetlands	Yes	Undetermined	Flat	Yes
North Fayette	Mahoney Road	0029	.5	Suburban	50 - 100 feet	Yes	Municipal Road	Flat	Yes
O'Hara	Wible Run Road	0166	.25	Suburban	More than 100 feet	Yes	Municipal Road	Flat	No
Oakmont/Verona	Plum Road	0207	5	Urban	In Waterway/Wetlands	Yes	State Road	Flat	Yes
Penn Hills	Rodi Road - Site 1	0185	.5	Suburban	In Waterway/Wetlands	No	Municipal Road	Flat	Yes
Penn Hills	I-376 on ramp	0189	7	Urban	Within 50 feet	Yes		Medium Slope	Yes
Penn Hills	Westward/Horizon	0183	.25	Suburban	No Waterway Nearby	No	County Road	Steep Slope	Yes
Penn Hills	Rodi Road - Site 2	0186	.125	Suburban	No Waterway Nearby	Yes	Municipal Road	Flat	Yes
Penn Hills	Rodi Road - Site 3	0187	.75	Suburban	No Waterway Nearby	No	Municipal Road	Flat	Yes
Penn Hills	Frankstown Road	0139	1	Suburban	No Waterway Nearby	No	Municipal Road	Steep Slope	Yes
Penn Hills	Rodi Road - Site 4	0188	.25	Suburban	In Waterway/Wetlands	No	Municipal Road	Flat	Yes
Pine Township	Warrendale Bakerstown Road near	0078	.5	Rural	No Waterway Nearby	Partial	Undetermined	Flat	Yes
Plum	Piersons	0150	.5	Urban	Within 50 feet	Yes	Municipal Road	Flat	Yes
Plum	New Texas (2075)	0151	1	Suburban	No Waterway Nearby	Partial	State Road	Medium Slope	Yes
Plum	Abers Creek Site 1	0152	.5	Suburban	In Waterway/Wetlands	Partial	Municipal Road	Flat	Yes
Plum	Abers Creek Site 2	0153	2	Suburban	No Waterway Nearby	Yes	Municipal Road	Gently Sloped	Yes
Robinson	N. Petrie Road Site 1	0017	1	Urban	Within 50 feet	Yes	State Road	Gently Sloped	No
Robinson	N. Petrie Road Site 2	0018	2.5	Suburban	In Waterway/Wetlands	Yes	State Road	Medium Slope	Yes
Robinson	N. Petrie Road Site 3	0019	2	Suburban	In Waterway/Wetlands	Yes	State Road	Gently Sloped	No
Robinson	Forest Grove	0020	.5	Suburban	No Waterway Nearby	Yes	State Road	Gently Sloped	Yes
Robinson	51 South	0047	1.5	Suburban	No Waterway Nearby	Partial	State Road	Flat	No
Sewickley Heights	Backbone Road	0210	.5	Suburban	Within 50 feet	No	Municipal Road	Extremely Steep	No
Shaler	Little Pine Creek Road	0165	.5	Suburban	No Waterway Nearby	Yes	Municipal Road	Flat	Yes
South Fayette	Millers Run Road	0033	.5	Suburban	Within 50 feet	Yes	State Road	Flat	Yes
South Fayette	Sturgeon Road Site 1	0034	2	Suburban	In Waterway/Wetlands	Partial	Municipal Road	Medium Slope	Yes
South Fayette	Sturgeon Road Site 2	0035	3	Rural	50 - 100 feet	Partial	Municipal Road	Gently Sloped	Yes
South Fayette	Sturgeon Road Site 3	0036	1.5	Rural	No Waterway Nearby	Yes	Municipal Road	Flat	Yes

Allegheny County Illegal Dump Survey Site Characteristics by Municipality*

Municipality	Site Name	Site Number	Calculated Tons	Demographics	Distance From Waterway	Visibility From Roadway	Road Type	Terrain	Active?
South Fayette	Sturgeon Road Site 4	0037	1	Rural	No Waterway Nearby	Partial	Municipal Road	Gently Sloped	No
South Fayette	Sturgeon Road Site 5	0038	2	Urban	No Waterway Nearby	Yes	Municipal Road	Flat	Yes
South Fayette	Laurel Hill Road	0039	2	Urban	No Waterway Nearby	Yes	Municipal Road	Medium Slope	Yes
South Fayette	Hickory Road	0041	2	Rural	No Waterway Nearby	Partial	Municipal Road	Gently Sloped	Yes
South Fayette	Bowman Road Site 1	0042	1	Rural	No Waterway Nearby	Yes	Municipal Road	Flat	Yes
South Fayette	Bowman Road Site 2	0043	2	Rural	No Waterway Nearby	Yes	Municipal Road	Gently Sloped	Yes
South Fayette	Coal Pit Run Road Site 1	0044	1	Rural	Within 50 feet	Yes	Municipal Road	Medium Slope	Yes
South Fayette	Coal Pit Run Road Site 2	0045	1	Rural	50 - 100 feet	Yes	Municipal Road	Gently Sloped	No
South Fayette	Sygan Road	0046	4	Suburban	Within 50 feet	Partial	Municipal Road	Medium Slope	Yes
South Park	Cochrans Mill Road	0053	4	Suburban	Within 50 feet	Yes	Municipal Road	Flat	Yes
South Park	Snowden	0054	1.5	Suburban	No Waterway Nearby	Yes	State Road	Gently Sloped	Yes
Springdale	Butler Street	0208	6	Urban	In Waterway/Wetlands	No	Municipal Road	Flat	Yes
Swissvale	Lot	0149	.125	Suburban	No Waterway Nearby	Yes	Undetermined	Flat	Yes
Swissvale	Briar Way Site 1	0201	6	Suburban	More than 100 feet	Partial	Private Road		Yes
Turtle Creek	Electric Ave.	0154	1	Urban	No Waterway Nearby	Yes	State Road	Medium Slope	Yes
West Deer Township	Rittman Road	0175	.5	Rural	No Waterway Nearby	Yes	Municipal Road	Flat	No
West Mifflin	New England Road	0059	2.5	Suburban	No Waterway Nearby	Yes	Municipal Road	Flat	Yes
West Mifflin	Whitaker / Eliza	0107	4	Urban	No Waterway Nearby	Yes	State Road	Flat	Yes
West Mifflin	Commonwealth	0133	1	Urban	No Waterway Nearby		State Road	Gently Sloped	Yes
Whitaker	Rt. 885 South	0130	.5	Suburban	50 - 100 feet	Yes	State Road	Flat	Yes
White Oak	Stewartsville Hollow Road Site 1	0124	.5	Suburban	In Waterway/Wetlands	Yes	State Road	Flat	Yes
White Oak	Stewartsville Hollow Road Site 2	0125	1.5	Suburban	In Waterway/Wetlands	Yes	State Road	Flat	Yes
Wilkins	William Penn Highway/Showcase	0178	.5	Suburban	In Waterway/Wetlands	Partial	Municipal Road	Gently Sloped	Yes
Wilkins	Lougeay Road Site 1	0181	.25	Suburban	No Waterway Nearby	Partial	Municipal Road	Medium Slope	Yes
Wilkins	Lougeay Road Site 2	0182	1.5	Suburban	50 - 100 feet	Partial	Municipal Road	Flat	Yes
Wilkins / Monroeville	Thompson Run Road	0128	1.5	Suburban	In Waterway/Wetlands	Yes	State Road	Flat	Yes
Wilkinsburg	Franklin Avenue	0194	2	Suburban	No Waterway Nearby	Yes	Municipal Road		Yes
Wilkinsburg	Swissvale Avenue	0195	.5	Suburban	No Waterway Nearby	Yes	Undetermined	Flat	Yes

Allegheny County Illegal Dump Survey Site Characteristics by Municipality*

Municipality	Site Name	Site Number	Calculated Tons	Demographics	Distance From Waterway	Visibility From Roadway	Road Type	Terrain	Active?
Wilkinsburg	Hill Avenue Alley	0196	1.25	Suburban	No Waterway Nearby	Yes	Undetermined		Yes
Wilkinsburg	Franklin Road and pull offs	0191	2	Suburban	No Waterway Nearby	Yes	Municipal Road		Yes
Wilkinsburg	Firehouse	0197	2.5	Suburban	No Waterway Nearby	Yes	Undetermined	Flat	Yes
Wilkinsburg	Robinson Blvd	0198	.25	Suburban	No Waterway Nearby	Partial	Undetermined	Flat	Yes
Wilkinsburg	Ardmore/Franklin Alley Site 1	0192	.5	Suburban	No Waterway Nearby	Yes	Municipal Road	Steep Slope	Yes
Wilkinsburg	Hay Street	0199	.25	Suburban	No Waterway Nearby	Yes	Undetermined	Steep Slope	Yes
Wilkinsburg	Ardmore/Franklin Alley Site 2	0193	.5	Suburban	No Waterway Nearby	Partial	Municipal Road	Gently Sloped	Yes
Wilkinsburg/Penn Hills	T-376 Off Ramp	00190	6	Urban	No Waterway Nearby	Yes	Undetermined	Steep Slope	Yes

Total Number of Sites: 202

Total Tons: 344.08

Illegal Dumpsite Characteristics Summary Chart by County

Dumpsite Characteristics	Erie	Mercer	Cumberland	Washington	Allegheny	Fayette
Total Sites Surveyed	83	143	37	126	202	163
Estimated Tons	121	154	132	317	344	736
Location Demographics						
Rural	71%	99%	78%	100%	15%	93%
Suburban	16%	1%	19%	0%	70%	7%
Urban	13%	0%	3%	0%	15%	0%
Visible from Road						
Yes	53%	60%	46%	60%	62%	73%
No	27%	13%	11%	27%	11%	10%
Partial	20%	27%	43%	13%	27%	17%
Distance from Waterway						
In Waterway/Wetlands	21%	13%	11%	6%	24%	16%
Near Waterway; within 100 feet	19%	42%	43%	54%	33%	40%
No Waterway	60%	45%	46%	40%	43%	44%
Road Type						
State	20%	5%	11%	77%	37%	24%
Municipal	78%	94%	89%	23%	45%	72%
Private/Undetermined	2%	1%	0%	0%	12%	4%
Terrain						
Flat	45%	55%	14%	48%	52%	32%
Gently Sloped	22%	20%	32%	43%	22%	17%
Medium Sloped	14%	18%	32%	7%	14%	21%
Steep	19%	7%	22%	2%	12%	30%

Municipalities with:						
Illegal dumping activity	53%	60%	41%	40%	43%	60%
Curbside Recycling Program	53%	15%	64%	19%	62%	40%
Mandatory Trash Collection	63%	15%	55%	66%	100%	40%

Allegheny County Illegal Dump Survey Waste Characteristics by Municipality*

Municipality	Site Name	Site Number	Calculated Tons	Bagged Trash	Household Trash	Recyclables	HHW	Tires	Clean Fill	C and D Waste	Yard Waste	White Goods	Electronics	Televisions	Furniture	Mattresses	Vehicle Parts	Car Batteries
Avalon	Spruce Run & Frederick	0069	.5	No	Yes	Yes	Yes		Yes	Yes	Yes						Yes	
Avalon	Norwood & City View	0070	1	No	Yes	Yes	Yes		Yes	Yes	Yes						Yes	
Bell Acres	Sevin Road	0209	.5	No	Yes	Yes	No	50	No	No	Yes	10					No	
Bellevue	Klemont Ave	0068	1.5	Yes	Yes	Yes	Yes		Yes	Yes	Yes				1-2+		No	
Bethel Park	Library Road (88 South) / Clifton	0052	5	No	Yes	No	No		Yes	Yes	Yes						No	
Borough of Millvale	Alfred Street	0167	1	No	Yes	Yes	No		No	No	No						No	2
Borough of Millvale	Martie Avenue	0168	2	No	Yes	No	No	7	Yes	Yes	No						No	1
Clairton	837 South	0057	2	No	Yes	No	No		Yes	Yes	Yes						No	
Clairton	Ridge / Desiderio (2028)	0105	1.5	No	Yes	No	No	4	No	Yes	Yes	1					No	
Collier	Baldwin	0025	2	No	Yes	No	No	10	No	No	No	2					Yes	
Collier	Scotts Run Road Site 1	0026	2.5	Yes	Yes	No	No	4	No	Yes	Yes	2	2				Yes	
Collier	Scotts Run Road Site 2	0027	1.5	No	Yes	No	Yes	5	Yes	Yes	Yes	2	2	2			No	
Collier	Scotts Run Road Site 3	0028	1.5	No	Yes	No	Yes	10	Yes	Yes	Yes	2					No	
Collier	County Road	0040	1.5	No	Yes	No	Yes	20	Yes	Yes	Yes	1	1	1			No	
Crescent	Intersection of Backtown Rd/Rarine	0008	1	Yes	Yes	No	No	2	No	Yes	Yes						No	
Crescent	Intersection of Crescent Blvd /	0009	.25	No	No	No			No	Yes	Yes						No	
Crescent	Spring Run Road	0010	2	Yes	Yes	No	No	3	Yes	Yes	Yes	2	2				No	
Dravosburg	837N	0106	1	Yes	Yes	No	No	10	No	Yes	Yes	1					Yes	
Dravosburg / Pleasant	Lewis Run Road	0060	10	No	Yes	No	Yes	1	Yes	Yes	Yes						No	
Duquesne	3rd Street	0131	3.5	No	Yes	No	No	5	Yes	Yes	Yes	1	0	0	0	0	No	0
Duquesne	Hamilton Street	0132	2	Yes	Yes	No	No	5	No	Yes	Yes	1	0	0	2	0	No	0
Duquesne	Homestead Duquesne Road	0147	4	Yes	Yes	No	Yes	1	No	Yes	Yes	0	2	0	2	1	Yes	0
East Deer Township	Second Street	0176	.5	No	Yes	No	No		No	No	Yes						No	
Elizabeth	2010	0109	3.5	No	Yes		No	> 25	Yes	Yes							Yes	
Elizabeth	2010 / 48 Junction	0110	1	Yes	Yes	No	No		Yes	Yes	No						No	
Elizabeth	48 South	0111	1.5	Yes	Yes	No	No	1	Yes	Yes	Yes						No	

*Quantities assessed at time of survey were estimates based on what was visible.

Allegheny County Illegal Dump Survey Waste Characteristics by Municipality*

Municipality	Site Name	Site Number	Calculated Tons	Bagged Trash	Household Trash	Recyclables	HHW	Tires	Clean Fill	C and D Waste	Yard Waste	White Goods	Electronics	Televisions	Furniture	Mattresses	Vehicle Parts	Car Batteries
Elizabeth	Mill Hill	0112	.5	Yes	Yes	No	No	1	Yes	Yes	Yes						No	
Elizabeth	Long Hollow Road	0114	.5	No	Yes	No	No		No	Yes	Yes						No	
Elizabeth	Round Hill Road	0115	5	Yes	Yes	No	No		Yes	Yes	Yes						No	
Elizabeth	Renzie Road / Turkeyfoot	0117	.5	No	Yes	No	Yes	7	No	Yes	No						No	
Elizabeth	Boyd's Hollow Road	0118	1	Yes	Yes	Yes			No	No	No	1					Yes	
Elizabeth	Patterson Road	0119	1.5	No	Yes	No		1	No	Yes	Yes			1	3	1	Yes	
Elizabeth	Pine View	0120	.5	No	Yes	No	No		No	Yes	Yes						No	
Elizabeth	Forest Hill Road	0121	2	Yes	Yes	No	Yes	> 30	No	Yes	No	1	3				No	
Elizabeth	Greenock/Wexford Ave	0141	2.5	No	Yes	No	No	0	Yes	Yes	Yes	0	0	0	0	0	No	0
Elizabeth	Greenock	0142	.5	No	Yes	No	No	0	Yes	No	No	0	0	0	0	0	No	0
Elizabeth	West Smithfield (2018)	0143	2	No	Yes	No	No	10	Yes	Yes	No	0	0	0	0	0	No	0
Elizabeth / Boston	Renzie Road	0116	1	No	Yes	No	No	8	No	Yes	No						No	
Findlay	Camp Meeting Road	0001	.5	No	Yes	No	No	2	No	No	No	1	0	1	0	0	No	0
Findlay	Point Park Road	0003	1	No	Yes	No	No	2	No	No	No	3	3	0	0	0	No	0
Findlay	Washington Road	0002	1	Yes	Yes	No		48	No	Yes	Yes	1	1	0	2	1	No	0
Findlay	Robinson Road	0005	5	No	No	No	No	3	Yes	Yes	Yes						No	
Findlay	Potato Garden / Burgettstown Road	0004	1	Yes	Yes	No	Yes		Yes	Yes	No	1					No	
Findlay	Spring Run Road Ext	0011	2.5	No	No	No	No		Yes	Yes	No						No	
Findlay	Moon Clinton Road Site 1	0015	6	No	Yes		No		No	Yes	Yes					1		
Findlay	Moon Clinton Road Site 2	0016	.5	No	Yes	No	No	10	No	No	No						No	
Findlay	Potato Garden Road	0031	4	No	Yes	No	No	9	Yes	Yes	Yes	1	1				No	
Findlay/Moon	Boundary / close to Clinton	0013	1.5	No	No	No	No		No	No	Yes						No	
Forward	2001 / Bunola River Blvd Site 1	0063	.5	Yes	No	No	No	4	No	Yes	Yes	1	3				No	
Forward	2001 / Bunola River Blvd. Site 2	0064	.5	No	Yes	No	No	6	Yes	Yes	No		1				No	
Forward	2001 / Bunola River Blvd Site 3	0065	6	Yes	Yes	No	No	4	Yes	Yes	Yes		1				Yes	
Forward	2001/Bunola River Blvd Site 4	0066	.5	Yes	Yes	No		30	No	Yes	Yes						Yes	
Forward	2001 / Elkhorn Road	0067	3	Yes	Yes			>50	No	Yes	Yes	3	3		2		Yes	
Forward	Rostosky Ridge Road	0097	1	No	Yes	No	No	3	No	Yes	Yes						No	

Allegheny County Illegal Dump Survey Waste Characteristics by Municipality*

Municipality	Site Name	Site Number	Calculated Tons	Bagged Trash	Household Trash	Recyclables	HHW	Tires	Clean Fill	C and D Waste	Yard Waste	White Goods	Electronics	Televisions	Furniture	Mattresses	Vehicle Parts	Car Batteries
Forward	Unknown	0098	.5	No	Yes	No	No	> 20	No	No	Yes				1		No	
Forward	Elkhorn Road Site 1	0099	1	No	Yes		No	10	No	Yes							Yes	
Forward	Elkhorn Road Site 2	0100	5	Yes	Yes	No	Yes	> 100	Yes	Yes	Yes	2	1		2		Yes	
Forward	Raccoon Run Road / Bunola Blvd	0101	.5	No	Yes	No	No	2	No	Yes	Yes						No	
Forward	Raccoon Run Road Site 1	0102	.1	No	No	No	No	1	No	No	No	1					No	
Forward	Raccoon Run Road Site 2	0103	.5	Yes	Yes	No	No		No	No	No				1		No	
Forward	Sunny Side	0104	1	No	Yes	No		> 20	No	No	Yes	1					Yes	
Forward	Kelly Hollow	0113	1	No	Yes	No	No	3	No	Yes	No						No	
Forward	Elkhorn Road Site 3	0129	.5	No	No	No	No	13	No	No	No						Yes	
Glassport / Lincoln	Elizabeth Road (2001)	0108	2.5	Yes	Yes	No	Yes	> 25	Yes	Yes	Yes				2		No	
Hampton	Montour Road Site 1	0079	.125		Yes	Yes	Yes		Yes						1	3	No	
Hampton	Montour Road Site 2	0080	1	Yes	Yes	Yes	Yes	4	Yes	Yes	Yes						No	
Hampton	Wildwood Road Site 1	0081	.1					1+					1+					
Hampton	Felicity Ave	0082	.5	No	Yes	Yes	Yes	4+	Yes	Yes	Yes						Yes	
Hampton	Allison Park RR House on Route 8	0083	2.5	Yes	Yes	Yes	Yes	4+	Yes	Yes					2+		Yes	
Hampton	East Elfinwild near Balsam Dr	0084	.5	Yes	Yes	Yes	Yes		Yes	Yes	Yes				1		Yes	
Hampton	Route 8 Site 1	0085	2.5	Yes	Yes	Yes	Yes		Yes	Yes	Yes						Yes	
Hampton	McCully Road	0086	.5	No	Yes	Yes	Yes	6	Yes	Yes	Yes						Yes	
Hampton	Wildwood Road Site 3	0088	2	Yes	Yes	Yes	Yes		Yes	Yes	Yes				5		No	
Hampton	Wildwood Sample Road Site 1	0089	.25	Yes	Yes	Yes	Yes	4	Yes	Yes	Yes						No	
Hampton	Wildwood Sample Road Site 2	0090	.5	Yes	Yes	Yes	Yes	4	Yes	Yes	Yes						No	
Hampton	Wildwood Sample Road Site 3	0091	.5	Yes	Yes	Yes	Yes		Yes	Yes	No	1			1	1	No	
Hampton	Wildwood Sample Road Site 4	0092	.25	No	Yes	Yes	Yes		Yes	Yes	Yes				1		No	
Hampton	Wildwood Sample Road Site 5	0093	.5	Yes	Yes	Yes	Yes		Yes	Yes	Yes						No	
Hampton	Royal View & Sample Road	0094	.25	Yes	Yes	Yes	Yes		Yes	Yes	Yes				1		No	
Hampton	Wildwood & Hardt Road	0095	.25	No	Yes	Yes	Yes		Yes	Yes	Yes						Yes	1
Hampton	Harts Run and Middle Road	0161	1	No	No	No	No		No	Yes	No						No	
Hampton	Route 8 Site 2	0162	1	Yes	Yes	No	No		Yes	No	Yes						No	

Allegheny County Illegal Dump Survey Waste Characteristics by Municipality*

Municipality	Site Name	Site Number	Calculated Tons	Bagged Trash	Household Trash	Recyclables	HHW	Tires	Clean Fill	C and D Waste	Yard Waste	White Goods	Electronics	Televisions	Furniture	Mattresses	Vehicle Parts	Car Batteries
Hampton	Route 8 Site 3	0163	1.5	Yes	Yes	Yes	No		Yes	No	Yes						No	
Homestead	Basic Ave.	0134	1	Yes	Yes	No	No	20	No	No	Yes	0	2	0	0	1	No	0
Indiana / Hampton	Shaffer Road near Cedar Run Road	0160	.5	No	Yes	No	No	16	Yes	Yes	Yes	1					No	
Jefferson Hills	88 South/Spartz	0056	2	No	Yes	No	No	2	Yes	Yes	Yes						No	
Jefferson Hills	Old Clairton	0058	1.5	No	Yes	No	No	>50	Yes	Yes	Yes						No	
Jefferson Hills	Wall Road Site 1	0061	2	Yes	Yes	Yes	No	6	Yes	Yes	Yes						No	
Jefferson Hills	Wall Road Site 2	0062	4	No	No	No	No		Yes	Yes	Yes						No	
Kennedy	Ewing Road	0048	.5	No	Yes	No	No	9	No	No	Yes						No	
Kennedy	Forest Grove	0049		No	Yes	Yes	No		Yes	Yes	Yes	4					Yes	
Leet Township	Spencer Lane	0177	1	Yes	Yes	Yes	No	6	Yes	No	Yes						No	
Liberty	River Rd. (2027)	0145	2	Yes	Yes	Yes	No	40	Yes	Yes	Yes	0	0	0	0	0	Yes	0
Liberty	River Road	0146	1	Yes	Yes	No	No	10	Yes	Yes	Yes	0	0	0	0	0	No	0
Lincoln	Liberty Way	0144	2.5	No	No	No	No	20	No	Yes	Yes	0	0	0	5	0	No	2
Marshall	Wildflower Lane	0073	6	No	No	No	No		Yes	Yes	Yes						Yes	
Marshall	Woodland Road	0074	2	No	No	Yes	Yes		Yes	Yes	Yes						No	
Marshall	Cliff Run Site 2	0075	1	No	Yes	Yes	Yes	6	Yes	Yes	Yes				5		Yes	1
Marshall	Cliff Run Site 1	0076	1.5	No	Yes	Yes	Yes		Yes	Yes	Yes						No	
Marshall	Warrendale Bane	0077	1.5	No	No	Yes	No	12-24	Yes	Yes	Yes						Yes	1
McCandless	Irwin Road Site 1	0071	.25	No	No	Yes	Yes	6	Yes	Yes	Yes						No	
McCandless	Irwin Road Site 2	0072	3	Yes	Yes	Yes	Yes	8+	Yes	Yes	Yes				2		Yes	
McCandless	Wildwood Road Site 2	0087	10	Yes	Yes	Yes	Yes		Yes	Yes	Yes				10		No	
McCandless	Babcock Blvd	0096	3	Yes	Yes	Yes	Yes	12	Yes	Yes	Yes	1	1		2-3		Yes	
McKees Rocks	51 South	0050	5	Yes	Yes	Yes	Yes	9		Yes	Yes					3	No	
McKeesport	Eden Park Road Site 1	0136	1.5	No	Yes	No	No	1	Yes	Yes	Yes	0	0	0	0	0	No	0
McKeesport	Eden Park Road Site 2	0137	.5	No	Yes	No	No	7	No	Yes	Yes	0	0	0	0	0	No	0
McKeesport	Center St. (2118)	0140	3	Yes	Yes	Yes	Yes	20	No	Yes	Yes	0	1	0	0	0	Yes	0
Millvale	Weible Street - RR Track Area	0164	2.5	Yes	Yes	No	No		Yes	No	No					3	Yes	
Millvale	Willow Lane	0169	1.5	Yes	No	No	No			Yes	Yes						No	

Allegheny County Illegal Dump Survey Waste Characteristics by Municipality*

Municipality	Site Name	Site Number	Calculated Tons	Bagged Trash	Household Trash	Recyclables	HHW	Tires	Clean Fill	C and D Waste	Yard Waste	White Goods	Electronics	Televisions	Furniture	Mattresses	Vehicle Parts	Car Batteries
Millvale	Fornoff Lane	0170	1.5	No	Yes	No	No		No	No	No	1		2			Yes	
Millvale	Veronica St	0171	3	Yes	No	Yes	No	21	Yes	No	Yes						No	
Millvale	Stanton Avenue	0172	1.5	No	No	Yes	No	6	No	Yes	Yes		1				No	
Millvale	Troy Street	0173	3.5	Yes	No	No	No		Yes	No	Yes			1		3	No	
Millvale	Edison Street	0174	1	No	No	No	No	6	Yes	No	No						No	
Monroeville	130 E	0126	1	Yes	Yes	No	No	~ 20	No	Yes	No	1			1		Yes	
Monroeville	Old Frankstown/286 W	0148	.5	No	Yes	No	No	1	Yes	No	Yes	0	0	0	0	0	No	0
Monroeville	286 W	0138	2	Yes	Yes	Yes	No	2	No	Yes	No	0	0	0	0	0	Yes	0
Monroeville	Wilmerding/Monroeville	0155	3	Yes	Yes	No	No	0	No	Yes	Yes	0	0	0	0	0	Yes	0
Monroeville	Johnston Site 1	0156	1.5	No	Yes	No	No	0	No	Yes		0	0	0	0	0	No	0
Monroeville	Johnston Site 2	0157	1.5	No	Yes	No	No	20	No	Yes	Yes	1	0	0	1	0	No	0
Monroeville	Willow	0158	1	No	No	No	No	0	No	Yes	No	0	0	0	0	0	No	0
Monroeville	Pitcarin	0159	2.5	Yes	Yes	No	No	20	No	Yes	Yes	2	0	0	0	0	Yes	0
Monroeville	Sunset Site 1	0179	1	No	No	Yes	Yes	4	Yes	Yes	Yes	2			2		Yes	
Monroeville	Sunset Site 2	0180	1	No	Yes	Yes	No		Yes	Yes	Yes	2					Yes	
Monroeville (Pitcairn)	Pitcairn Road	0127	.5	No	No	Yes	No	10	No	Yes	No						No	
Moon	Flaugherty Road	0006	.5	No	Yes	No	No	2	No	No	No						No	
Moon	Flaugherty Road	0007	1	No	Yes	No	No		No	Yes	Yes						No	
Moon	3077	0012	.5	Yes	Yes	No	No		No	No	Yes						No	
Moon	Becks Run Road	0014	1	No	Yes	No	No		No	No	Yes						Yes	
Moon	Beaver Grade Road	0021	2.5	No	Yes	No	No	> 25	Yes	Yes	Yes	2	2		1	1	Yes	
Moon	Hookstown Grade Run / Beaver Road	0022	1	No	No	No	No		Yes	Yes	Yes						Yes	
Mt Lebanon / Castle	88 South	0055	1.5	No	Yes	No	No		Yes	Yes	Yes		1	1			No	
N. Fayette	Cliff Mine	0030	.5	No	Yes	No	No	10	No	Yes	No						Yes	
N. Fayette	Kelso Road	0032	.5	No	Yes	No	No	2	No	Yes	Yes				1		No	
N. Versailles/White Oak	McKee / Lower Heckman Road	0122	.5	No	Yes	No	No	8	Yes	No	Yes						No	1
N. Versailles/White Oak	McClintock	0123	1	No	Yes	No	No		No	Yes	Yes						No	
New Homestead	Niceville Street	0135	.5		Yes	No	No	1	No	No	Yes	1	1	0	0	0	No	0

Allegheny County Illegal Dump Survey Waste Characteristics by Municipality*

Municipality	Site Name	Site Number	Calculated Tons	Bagged Trash	Household Trash	Recyclables	HHW	Tires	Clean Fill	C and D Waste	Yard Waste	White Goods	Electronics	Televisions	Furniture	Mattresses	Vehicle Parts	Car Batteries
North Fayette	McWreath	0023	10	No	Yes	No	No	>100	Yes	No	Yes	2	2				Yes	
North Fayette	Short Street	0024	2	No	Yes	No	No	10	No	No	Yes						Yes	
North Fayette	Mahoney Road	0029	.5		Yes	No	No	1	Yes	No	Yes				1		No	
O'Hara	Wible Run Road	0166	.25	Yes	Yes	No	No		Yes	No	Yes						No	
Oakmont/Verona	Plum Road	0207	5				Yes	30		Yes	Yes	5			10		Yes	
Penn Hills	Rodi Road - Site 1	0185	.5	Yes	Yes	Yes	No	2	Yes	Yes	Yes				1		Yes	
Penn Hills	I-376 on ramp	0189	7	Yes	Yes	Yes	Yes	-	Yes	No	No	-	-	-	-	-	Yes	-
Penn Hills	Westward/Horizon	0183	.25															
Penn Hills	Rodi Road - Site 2	0186	.125	Yes	Yes	Yes	Yes		No	Yes	No		1	1			No	
Penn Hills	Rodi Road - Site 3	0187	.75	No	No	Yes	Yes		Yes	Yes	Yes				2		Yes	
Penn Hills	Frankstown Road	0139	1	No	Yes	Yes	Yes		Yes	Yes	Yes	3			2		Yes	
Penn Hills	Rodi Road - Site 4	0188	.25	No	No	Yes	Yes		Yes	Yes	Yes	1			2		Yes	
Pine Township	Warrendale Bakerstown Road near	0078	.5	No	Yes	Yes	Yes		Yes	Yes	Yes						No	
Plum	Piersons	0150	.5	Yes	Yes	No	Yes	3	No	Yes	Yes	0	0	0	0	0	No	0
Plum	New Texas (2075)	0151	1	No	Yes	No	No	2	No	Yes	Yes	0	0	0	0	0	No	0
Plum	Abers Creek Site 1	0152	.5	No	Yes	No	No	1	No	No	Yes	0	0	0	1	0	No	0
Plum	Abers Creek Site 2	0153	2	No	Yes	Yes	No	0	Yes	Yes	Yes	0	0	0	0	0	Yes	0
Robinson	N. Petrie Road Site 1	0017	1	No	Yes	No	No		No	No	Yes						No	
Robinson	N. Petrie Road Site 2	0018	2.5	No	Yes	No	No	5	Yes	Yes	Yes						Yes	
Robinson	N. Petrie Road Site 3	0019	2	No	Yes	No	No	2	Yes	Yes	Yes						No	
Robinson	Forest Grove	0020	.5	No	Yes	No	No		Yes	Yes	No						Yes	
Robinson	51 South	0047	1.5	Yes	Yes	No	No	20	No	Yes	Yes				1		No	
Sewickley Heights	Backbone Road	0210	.5	No	No	No	No	30	No	No	Yes	1					No	
Shaler	Little Pine Creek Road	0165	.5	No	Yes	No	No		No	No	Yes						No	
South Fayette	Millers Run Road	0033	.5	No	Yes	No	No	15	Yes	No	Yes						No	
South Fayette	Sturgeon Road Site 1	0034	2	Yes	Yes	No	Yes	5	No	Yes	Yes	1	1		4		No	
South Fayette	Sturgeon Road Site 2	0035	3	No	Yes	No	Yes	3	Yes	Yes	Yes	2	2	2			No	
South Fayette	Sturgeon Road Site 3	0036	1.5	No	Yes	No	Yes	5	No	Yes	Yes		2	2	3		No	

Allegheny County Illegal Dump Survey Waste Characteristics by Municipality*

Municipality	Site Name	Site Number	Calculated Tons	Bagged Trash	Household Trash	Recyclables	HHW	Tires	Clean Fill	C and D Waste	Yard Waste	White Goods	Electronics	Televisions	Furniture	Mattresses	Vehicle Parts	Car Batteries
South Fayette	Sturgeon Road Site 4	0037	1	No	No	No	No		No	Yes	Yes						No	
South Fayette	Sturgeon Road Site 5	0038	2	Yes	Yes	No	Yes	5	Yes	Yes	Yes		1	1	2		Yes	
South Fayette	Laurel Hill Road	0039	2	No	Yes	Yes	Yes		Yes	Yes	Yes		1	1	?		No	
South Fayette	Hickory Road	0041	2	No	No	No	No	> 50	Yes	Yes	No						No	
South Fayette	Bowman Road Site 1	0042	1	No	No		No		No	Yes	Yes							
South Fayette	Bowman Road Site 2	0043	2	No	Yes	No	No	15	Yes	Yes	Yes	1					No	
South Fayette	Coal Pit Run Road Site 1	0044	1	No	Yes	No	Yes	4	Yes	Yes	Yes	1	1		1		No	
South Fayette	Coal Pit Run Road Site 2	0045	1	No	Yes	No	No		No	No	Yes						No	
South Fayette	Sygan Road	0046	4	No	Yes	Yes	Yes	4	Yes	Yes	Yes	2	2				Yes	
South Park	Cochrans Mill Road	0053	4	No	Yes	No	No	2	No	Yes	Yes						No	
South Park	Snowden	0054	1.5	No	Yes	No	No		Yes	Yes	Yes						No	
Springdale	Butler Street	0208	6					30		Yes					1			
Swissvale	Lot	0149	.125	No	No	No	No	2	No	Yes	No	-	-	-	-	-	No	-
Swissvale	Briar Way Site 1	0201	6	No	Yes	Yes	Yes	10+	Yes	Yes	Yes	6+	+	2+	4+	2	Yes	?
Turtle Creek	Electric Ave.	0154	1	No	Yes	No	No	20	No	No	No	0	0	0	0	0	No	0
West Deer Township	Rittman Road	0175	.5	Yes	Yes	No	No	2	Yes	No	No	0					No	
West Mifflin	New England Road	0059	2.5	No	Yes	No	No	>30	Yes	Yes	Yes	1					No	
West Mifflin	Whitaker / Eliza	0107	4	No	Yes	No	No		Yes	Yes	Yes						Yes	
West Mifflin	Commonwealth	0133	1	No	Yes	No	No	0	No	Yes	Yes	0	0	0	0	0	No	0
Whitaker	Rt. 885 South	0130	.5	No	Yes	No	No	1	No	Yes	Yes	0	0	0	0	0	No	0
White Oak	Stewartsville Hollow Road Site 1	0124	.5	No	Yes	No	No		Yes	No	Yes						No	
White Oak	Stewartsville Hollow Road Site 2	0125	1.5	Yes	Yes	No	No	1	Yes	Yes	Yes						No	
Wilkins	William Penn Highway/Showcase	0178	.5	No	Yes	Yes	Yes	6	Yes	Yes	Yes						No	
Wilkins	Lougeay Road Site 1	0181	.25			Yes	Yes			Yes	No						Yes	
Wilkins	Lougeay Road Site 2	0182	1.5	No	No	Yes	Yes	6-8	Yes	Yes	Yes				2		Yes	
Wilkins / Monroeville	Thompson Run Road	0128	1.5	Yes	Yes	No	No	4	Yes	Yes	No						No	
Wilkinsburg	Franklin Avenue	0194	2	Yes	Yes	Yes	No		Yes	Yes	Yes	-	-	-		-	Yes	-
Wilkinsburg	Swissvale Avenue	0195	.5	Yes	Yes	Yes	No	6	Yes	Yes	Yes	1	-	-	1	-	Yes	-

Allegheny County Illegal Dump Survey Waste Characteristics by Municipality*

Municipality	Site Name	Site Number	Calculated Tons	Bagged Trash	Household Trash	Recyclables	HHW	Tires	Clean Fill	C and D Waste	Yard Waste	White Goods	Electronics	Televisions	Furniture	Mattresses	Vehicle Parts	Car Batteries
Wilkinsburg	Hill Avenue Alley	0196	1.25	No	No	No	No	-	No	Yes	No	-	-	-	-	-	No	-
Wilkinsburg	Franklin Road and pull offs	0191	2	Yes	Yes	Yes	Yes	6	Yes	Yes	Yes	2	-	-	3	-	Yes	1
Wilkinsburg	Firehouse	0197	2.5	No	Yes	Yes	Yes	12+	Yes	Yes	Yes	10	6	-	4	-	Yes	-
Wilkinsburg	Robinson Blvd	0198	.25				No	-		Yes		-	-	-	2	-		-
Wilkinsburg	Ardmore/Franklin Alley Site 1	0192	.5	Yes	Yes	Yes	Yes	2	Yes	Yes	Yes	1	3	1	2	-	Yes	-
Wilkinsburg	Hay Street	0199	.25			No	No			Yes	Yes						No	
Wilkinsburg	Ardmore/Franklin Alley Site 2	0193	.5	Yes	Yes	Yes	Yes	3	Yes	Yes	Yes	-	-	-	2	-	Yes	1
Wilkinsburg/Penn Hills	T-376 Off Ramp	00190	6	No	Yes	Yes	No	1	No	Yes	No	-	-	-	-	-	Yes	-

Total Number of Sites:

202

Total Tons:

344.08

Allegheny County Illegal Dumpsite Survey Acknowledgements

Produced by PA CleanWays

Rebecca Bellows, Cindy Daugherty, Karen Fritz, Jolene Naugle, and Jerry Zona, PA CleanWays
Michelle Dunn, Andrea Foessel-Bunting, and Kumar Ramanathan, Survey Technicians, PA CleanWays
Angela Lundy, University Center for Social and Urban Research, University of Pittsburgh
Danielle Crumrine, Executive Director, PA CleanWays of Allegheny County

A special thanks to the rest of the PA CleanWays staff for their various
contributions of report design, data management, and editing.



This report was produced with funding through
The Department of Environmental Protection



PA CleanWays
105 West Fourth Street, Greensburg, PA 15601
Phone: 724-836-4121 • Fax: 724-836-1980
www.pacleanways.org