

“If everyone sweeps before his own front door, then
the street is clean.”

- Johann Wolfgang van Goethe

Illegal dumping continues to plague the Commonwealth and have a costly impact:

- Between 2004 and 2013, more than 6,400 illegal dump sites identified.
- Costs average \$617 per ton or \$2,947 per cleanup - or higher - to remediate. KPB Illegal Dump Cost Research 2013-MSW Consultants
- Investigations are time-consuming and labor-intensive.
- Illegal dumping occurs most frequently where the risk of detection and penalties are low, and where there is a lack of acceptable disposal or recycling outlets.

THE CYCLICAL DILEMMA

- Trash attracts trash.
- Cleanups must occur to reduce the impact on the environment.
- Cleaning up the sites absolves the dumper of responsibility.
- Mechanisms to prevent and deter illegal dumping are critical.

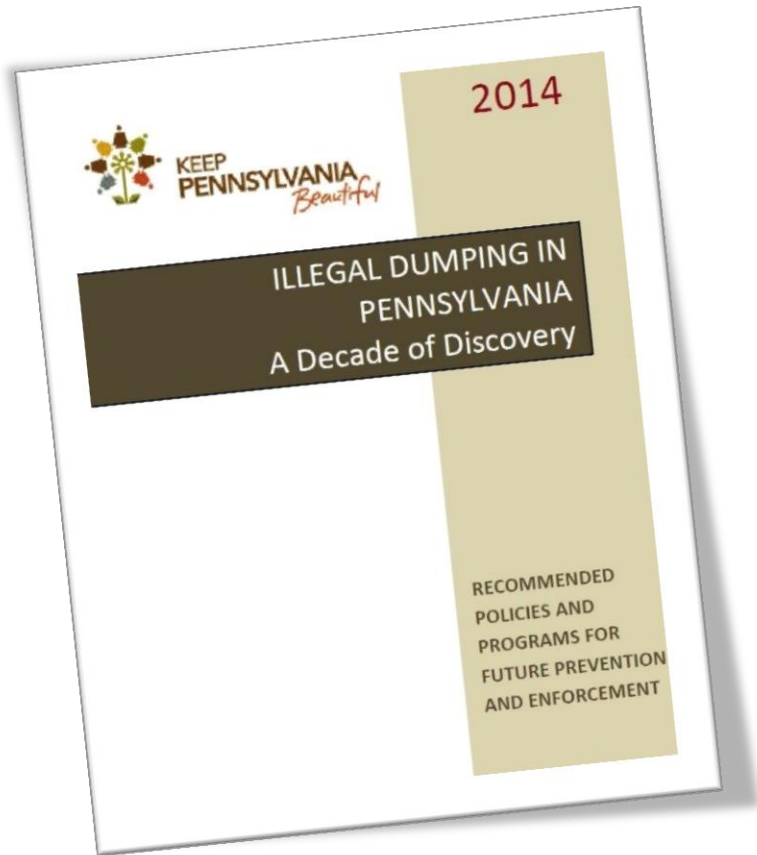


NOW WHAT?

10 YEARS OF RESEARCH AND ANALYSIS

- ✓ 67 County Illegal Dump Surveys 2004-2013
- ✓ KPB Illegal Dumping Cost Research 2013, MSW Consultants
- ✓ Fall 2013 Penn State Poll
- ✓ Focus Groups and Stakeholder Interviews 2014
- ✓ Compiled Demographic Profile and Waste/Recycling Statistics 2013-2014

Made Possible through Funding From



Nestor Resources, Inc.

WHAT'S IN THE REPORT:

- Extent And Impact Of Illegal Dumping
- Affect of Municipal Waste Management Practices
- Effectiveness of Regulatory And Enforcement Powers
- Demographic Profile and Waste/Recycling Statistics
- Public Awareness And Stakeholder Participation
- Conclusions And Recommendations

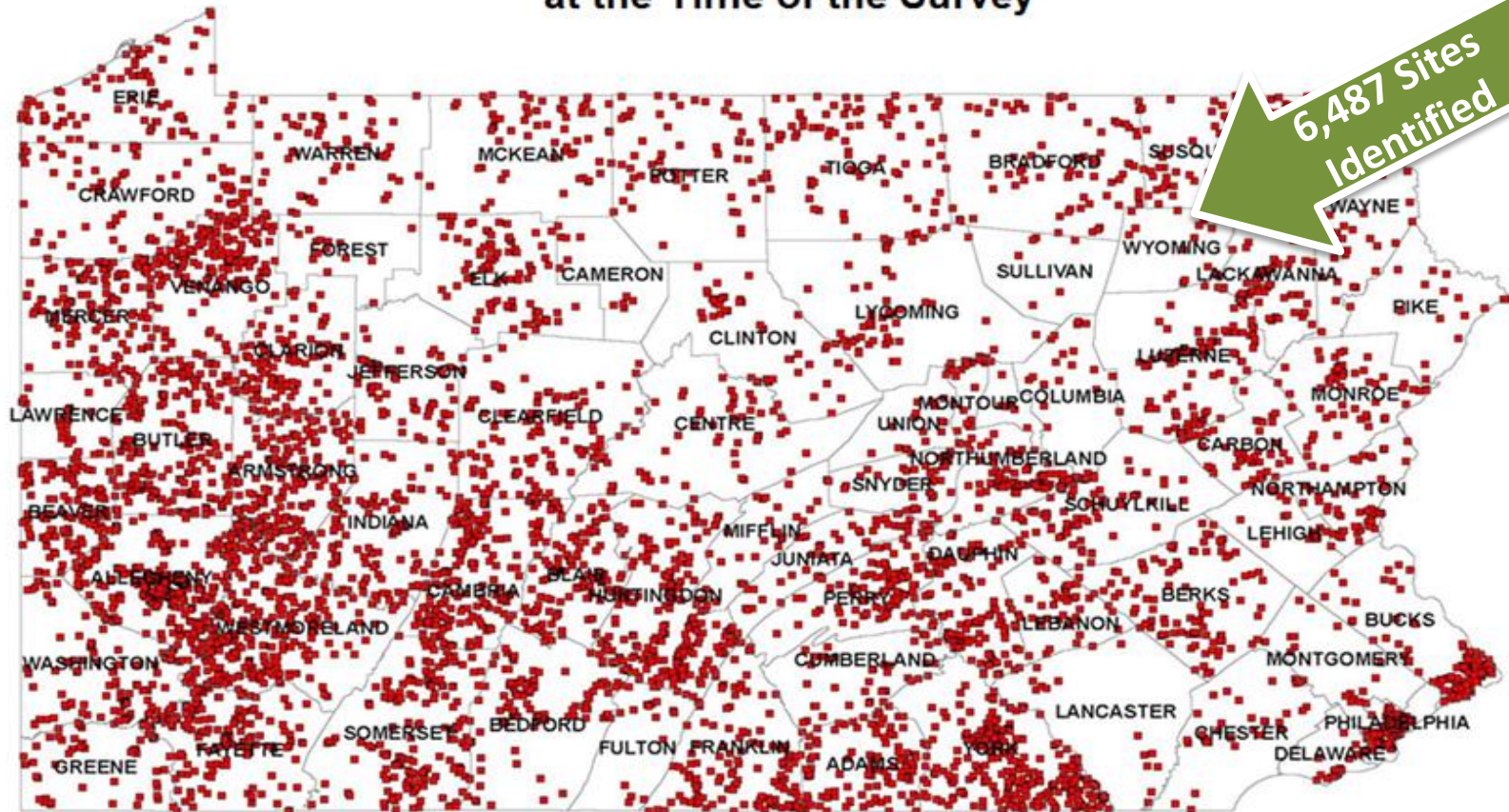
To review the report:

<http://www.keeppabeautiful.org/AboutUsAffiliates/Publications.aspx>

**Made Possible through Funding From
PA Department of Environmental Protection and
The Richard King Mellon Foundation**

Pennsylvania Illegal Dumpsites by County at the Time of the Survey

6,487 Sites
Identified



■ Illegal Dumpsites as of June 2013

0 12.5 25 50 75 100 Miles



© 2013 Keep Pennsylvania Beautiful
Map Prepared by Caesar deChicchis
UCSUR, University of Pittsburgh



Legacy Sites



Active Commercial
Dumping



Active Residential
Dumping



Theft of Service
Public & Private

LAWS AND ENFORCEMENT

FINDINGS AND SUGGESTED MODIFICATIONS

ENFORCEMENT AND PENALTIES

- Currently focus on Enforcement more than Prevention.
- Disposal bans and restricted access as a form of enforcement, creates illegal dumping without alternative measures available.
- Lack of local resources for enforcement and remediation.
- Penalties are disproportionately low vs. legal disposal and remediation.
- Few convictions due to lack of evidence.

Focus Groups Feedback on Laws & Enforcement

Transporter Issues

Registration fees low entrance barrier for irresponsible tire haulers

Tracking and monitoring system for waste tires could be improved

Manifested tire loads could reduce illegal dumping

Disposal Issues

Unintended consequence of CDRA is illegal dumping

Hold salvage yards accountable for accepting CDRA “parts”

CDRA Landfill ban 100% exceeds manufacturers’ coverage 85%

Phone Survey Feedback on Laws & Enforcement

Appropriate Punishment For Illegal Dumping

Respondents favored the following:

69.6% = Clean Up Illegally Disposed Of Waste

30.4% = Jail Time

50% = Community Service And Fines Of Varying Amounts

Appropriate Use of Fines

91.8% believe fines from illegal dumping should go for site cleanup.

Entity Responsible For Use Of Fines From Illegal Dump Sites

Respondents indicated:

Municipalities (35.2%)

Counties (26.1%)

State (30.6%)

Regulating Small Haulers And Contractors

86.0% favor licensing/regulation of building contractors, remodelers, roofers, and junk haulers to ensure proper waste management

RECOMMENDATIONS FOR ENFORCEMENT

Expand the use of surveillance cameras at active illegal dumping sites

Create a Joint Code Enforcement Officer Program to support local governments

Revoke transporter licenses and authorizations and require forfeiture of equipment for certain violations

RECOMMENDATIONS FOR ENFORCEMENT

Establish an Environmental Law Court Day or assign dedicated District Justice to expedite cases

Establish an Expert Witness Bureau to assist in the prosecution of suspected illegal dumping

Establish fines that significantly outweigh the avoided cost of disposal

Devote fines to cleanup funds

WASTE AND RECYCLING COLLECTION PRACTICES

Findings & Recommendations

Municipal Waste Service Offerings Inconsistencies & Inequities

- 2,562 Pennsylvania municipalities.
- Each may have their own variations of service and bidding requirements.
(OR NONE AT ALL)
- This makes waste management & recycling more complex, less efficient, and often costlier.
- Unclear expectations, and lack of education contribute to poor participation, contamination and illegal dumping.



Phone Survey Feedback on Collection Services

Curbside Collection

86.7% of Pennsylvanians surveyed have curbside trash collection

LOWEST - North Central (64%)

HIGHEST - Southeast (92.2%) and Southwest (93.7%)

Recycling

What would prompt them to increase recycling?

MOST INFLUENTIAL

Having items collected at the curb

LEAST INFLUENTIAL

A mandate to recycle

More information about the benefits of recycling

Phone Survey Feedback on Bulky Waste Collection Services

**Bulky Items,
Appliances,
Tires,
Furnishings,
Etc.**

41.5% not included with their household waste service

LOWEST AVAILABILITY North Central = 73.5% Northwest = 56.5%

58.5% collection included with their household waste service

**Items Accepted
Where Service
Is Available**

49.6% -Household Furnishings

28.7% - Large Appliances

25.4% - Roofing/Remodeling Waste

9.7% - Tires

**Service
Frequency
Where Service
Is Available**

50.8%% at least monthly and many weekly. (NCR only 9.4%)

28 % must call ahead to schedule pickup.

62.1% in the North Central region only once/ twice a year

Some Areas in Pennsylvania Are Not Suited for Curbside Collection Why Not Substitute Practical Alternatives?



SAMPLE CONVENIENCE CENTER LAYOUT

Other Configurations



Repurposing a Car Wash



Secure Off-loading and Storage



Redevelopment of Brownfield Site



Fenced Area Next to Municipal Offices

Phone Survey Feedback on Alternative Collection Services

Alternatives to Curbside Collection

87.8% would use a convenience center, if available, to take household trash, recyclables, and other materials.

DISTANCE

Those willing to drive more than 11 miles

36.8% who earn > \$75,000 household income

24.8% who earn < \$75,000 household income

CONSUMER FEES FOR DISPOSAL OF BULKY ITEMS

47.4% favor a fee paid when the item is returned or collected

A statewide law is needed to ensure for all, regardless of the municipality, universal access to waste & recycling collection and/or outlets



Shift focus of county municipal waste planning from disposal capacity to coordinate and demonstrate how local municipalities will plan for and attain universal access.

RECOMMENDATIONS TO ENSURE RESIDENTIAL ACCESS TO SERVICES

Expand waste & recycling curbside collection to the greatest extent possible.

Allow for staffed convenient drop-off facilities in lieu of curbside.

Promote municipal contracts to control costs and provide uniform services.

Provide for collection of tires, bulk items and appliances at curbside or at convenient facilities.

Institute a subsidy for waste & recycling collection for eligible low income households.

RECOMMENDATIONS TO DETER COMMERCIAL DUMPING

Require proof of disposal with local building, demolition, and prior to local occupancy permits.

Expand waste transporter authorization to include small contractors, remodelers, and roofers.

Require waste tire transporters to submit logs.

Require manifests for loads of tires for transporters, processors and retailers.

RECOMMENDATIONS TO INCREASE AWARENESS

Implement a statewide multi-media education campaign on proper waste management.

Establish an Environmental Law Training Program for Enforcement Officers and District Justices.

Create a series of seminars for local officials on effective ordinances and collection contracts.

Utilize crime scene tape at illegal dumping sites to signify it is a criminal activity

Special thanks to our Primary Funders



The Richard King Mellon
Foundation

To access reports and recommendations:

<http://www.keppabeautiful.org/AboutUsAffiliates/Publications.aspx>

Shannon Reiter
President
Keep Pennsylvania Beautiful
www.keppabeautiful.org
sreiter@keppabeautiful.org